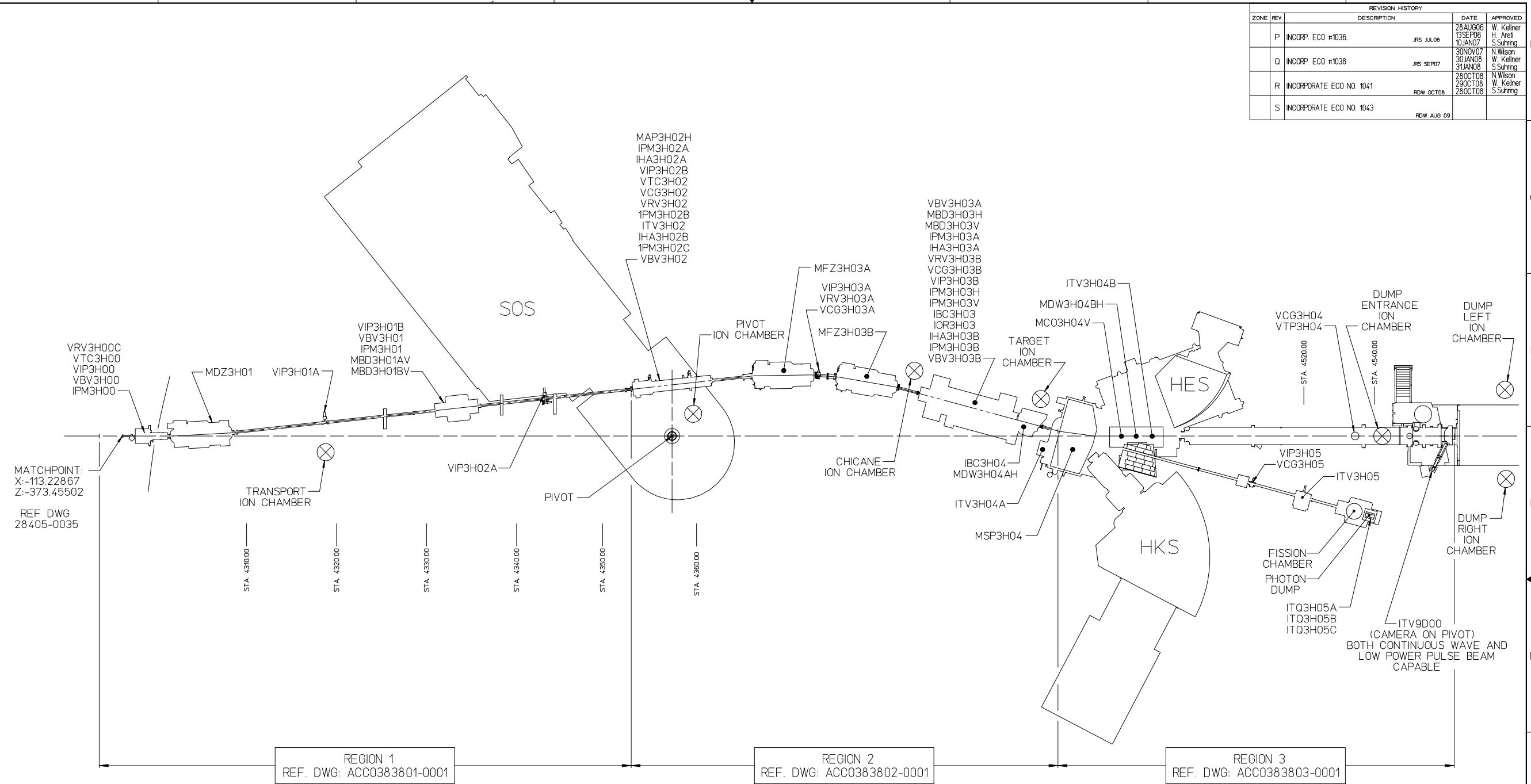
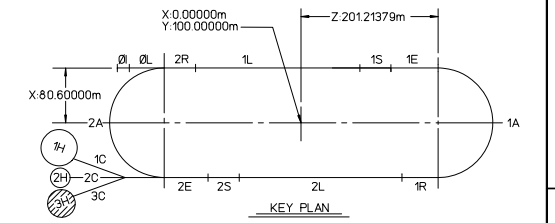


REVISION HISTORY				
ZONE	REV	DESCRIPTION	DATE	APPROVED
P	INCORP. ECO #1036	RS JUL06	28AUG06 13SEP06 10JAN07	W. Kellner H. Arell S. Suhring
Q	INCORP. ECO #1038	RS SEP07	30NOV07 30JAN08 31JAN08	N. Wilson W. Kellner S. Suhring
R	INCORPORATE ECO NO. 1041	RDW OCT08	28OCT08 29OCT08 28OCT08	N. Wilson W. Kellner S. Suhring
S	INCORPORATE ECO NO. 1043	RDW AUG 09		



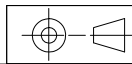
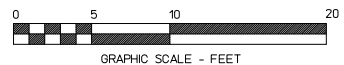
GENERAL NOTES:

1. INSTALLATION PER CEBAF DWG 28401-E-0293, SHT3.
2. THIS DRAWING CONFIGURATION APPLIES TO 'HKS / HES', TUNAF EXPERIMENT NO. E05-115.
3. SEE THE ABOVE INDICATED DWGS FOR SPECIFIC INFORMATION RELATED TO REGIONS 1 THRU 3.



LEGEND
(Indicating Lowest Energy Line Shown)

0I	- Injector
0L	- Pre-accelerator
2R	- Second Recombiner
1L	- First Linac
1S	- First Spreader
1E	- First Extractor
1A	- First Arc
1R	- First Recombiner
2L	- Second Linac
2S	- Second Spreader
2E	- Second Extractor
2A	- Second Arc
2C	- Transport Channel



AREA	SIGNATURE	DATE	FINISH	UNLESS OTHERWISE NOTED DIMENSIONS ARE IN INCHES TOLERANCES ARE FRACTIONS DECIMAL MILLIMETERS * N/A * N/A * N/A * N/A
VAC	Scott Williams	05/12/96	N/A	
INSTR	Karel Capek	05/14/96	N/A	
MAG	Mark Wiseman	05/14/96	N/A	
OPNS	Steve Suhring	05/14/96	N/A	
ALIGN	Chris Curtis	05/06/96	N/A	

CADD ID. NO. 284050038revS	APPROVALS	DATE
DRAWN JACKI R. SMITH	12/09/95	
CHECKED Chris Graves	05/03/96	
APPROVED W. OREN	05/16/96	
APPROVED SEE LEFT		

CEBAF
The Continuous Electron Beam Accelerator Facility
NEWPORT NEWS, VIRGINIA
UNITED STATES DEPARTMENT OF ENERGY

BEAM TRANSPORT MACHINE CONFIGURATION LINE 'C' - HALL 'C'

SIZE: DWG NO. 28405-E-0038
SHEET 1 OF 1