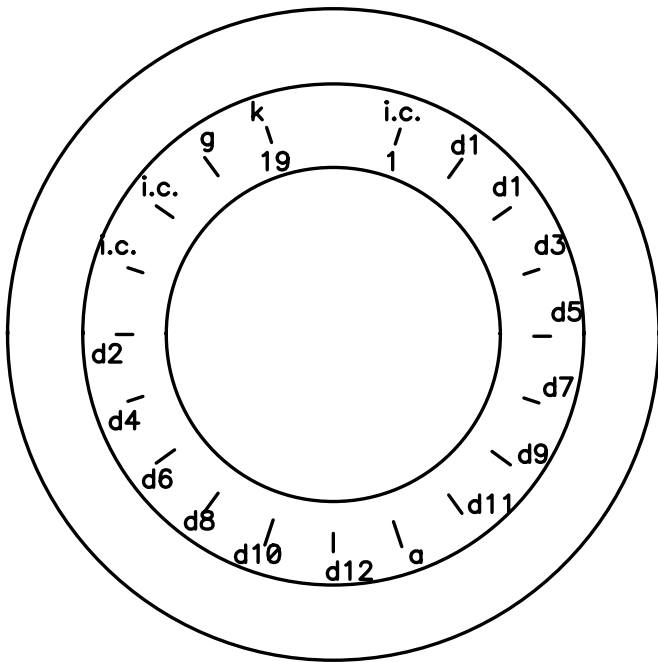
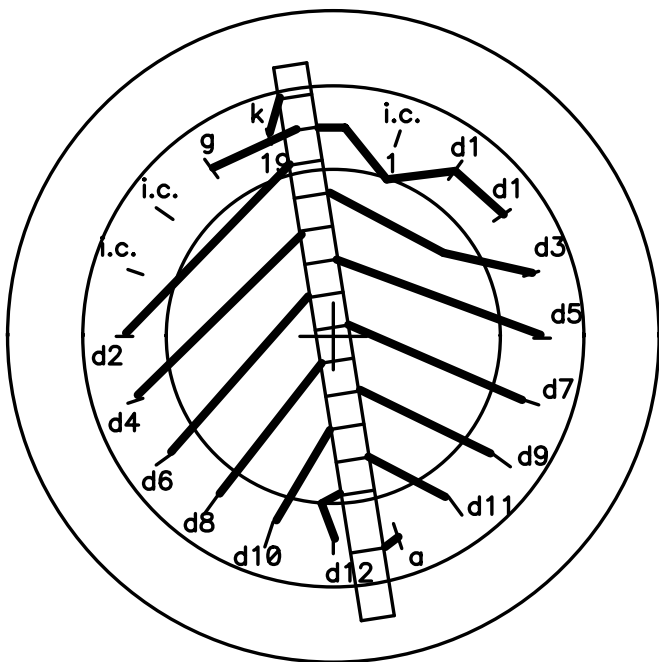


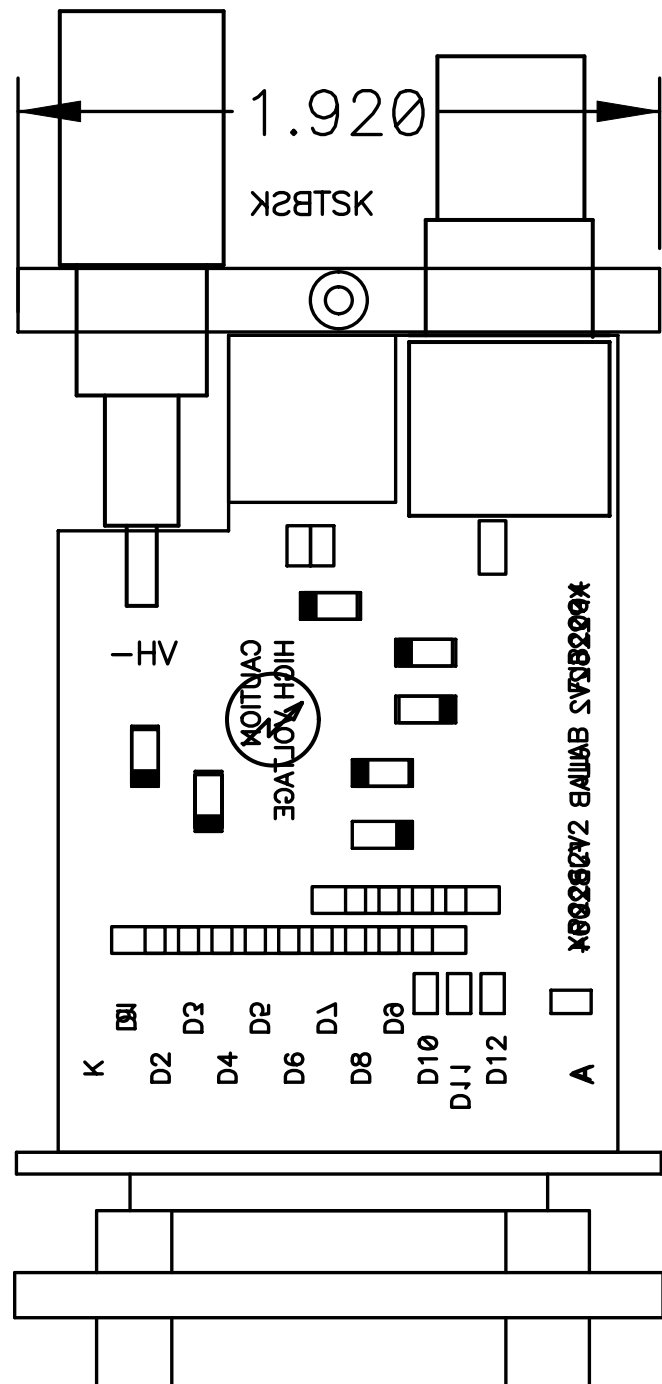
XP2262 SOCKET ASSEMBLY



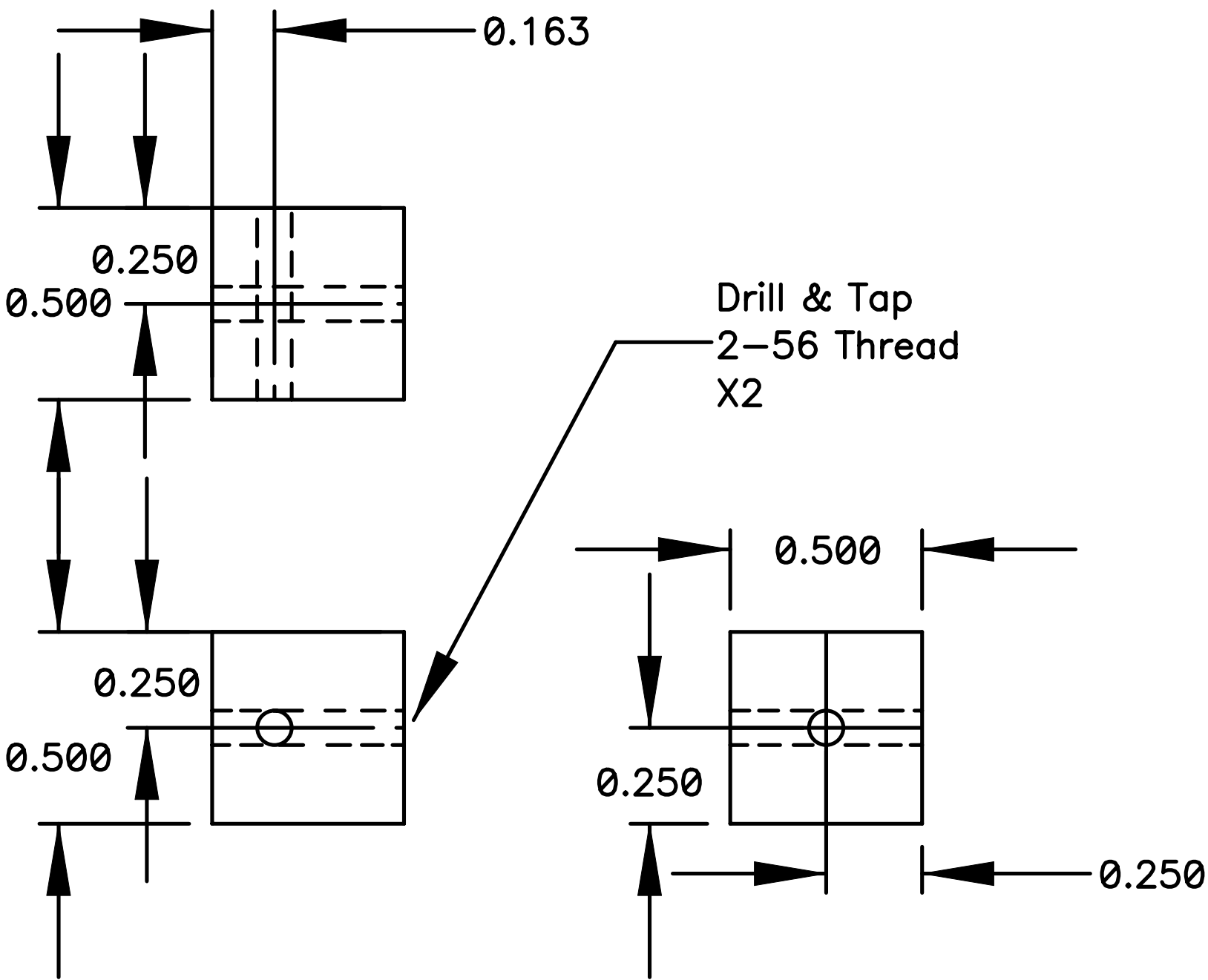
XP2262 Socket - Pin Solder Side View



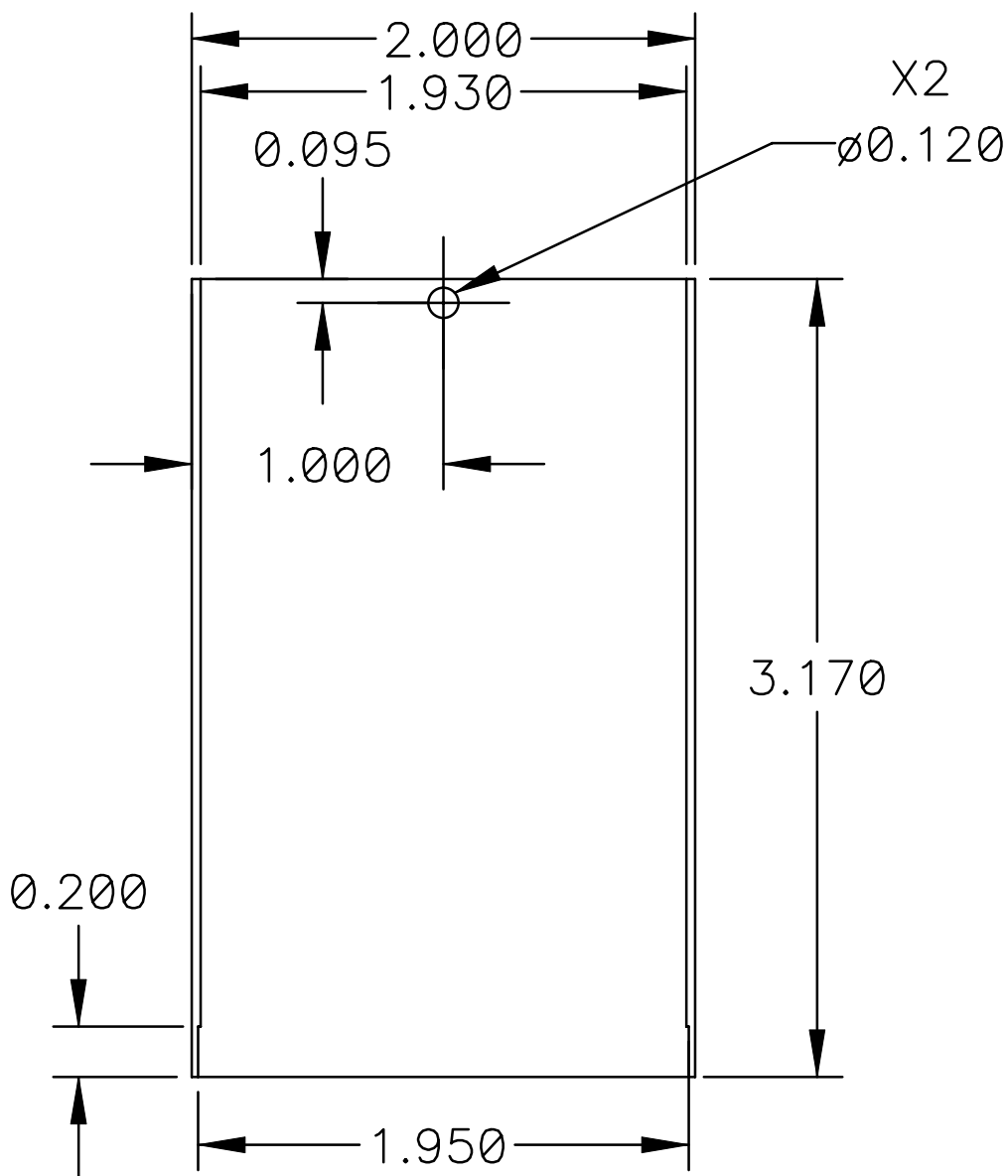
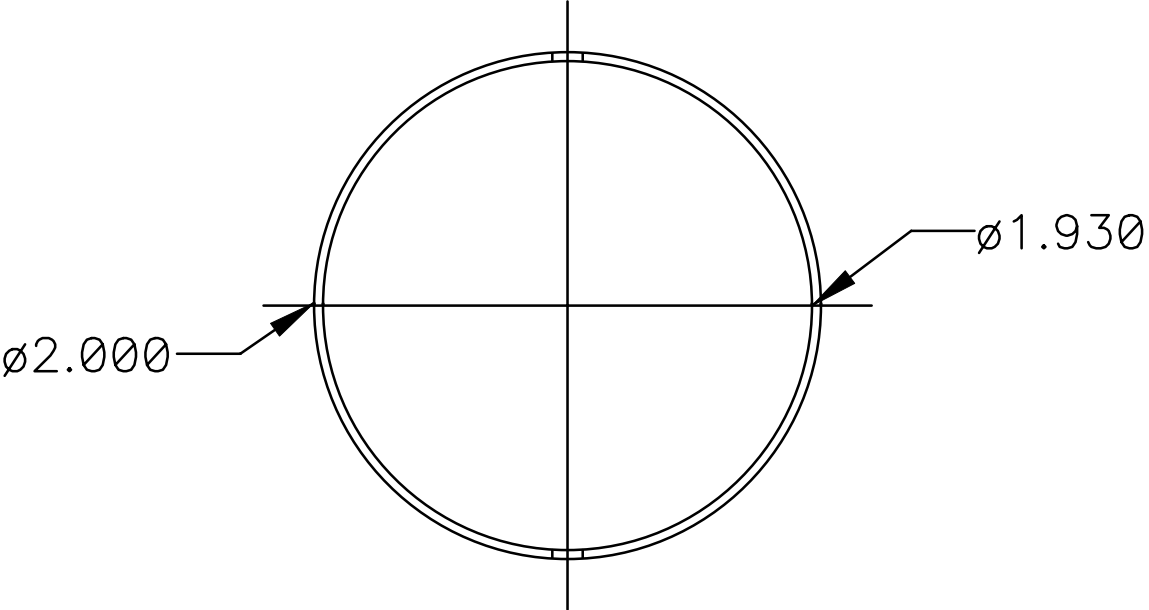
XP2262 Socket-to-PCB Wiring
(Top View from PCB Side)



XP2262 Socket & PCB Assembly (Side View)
Center PCB on Socket and Keep 0.1" Gap from Pins.

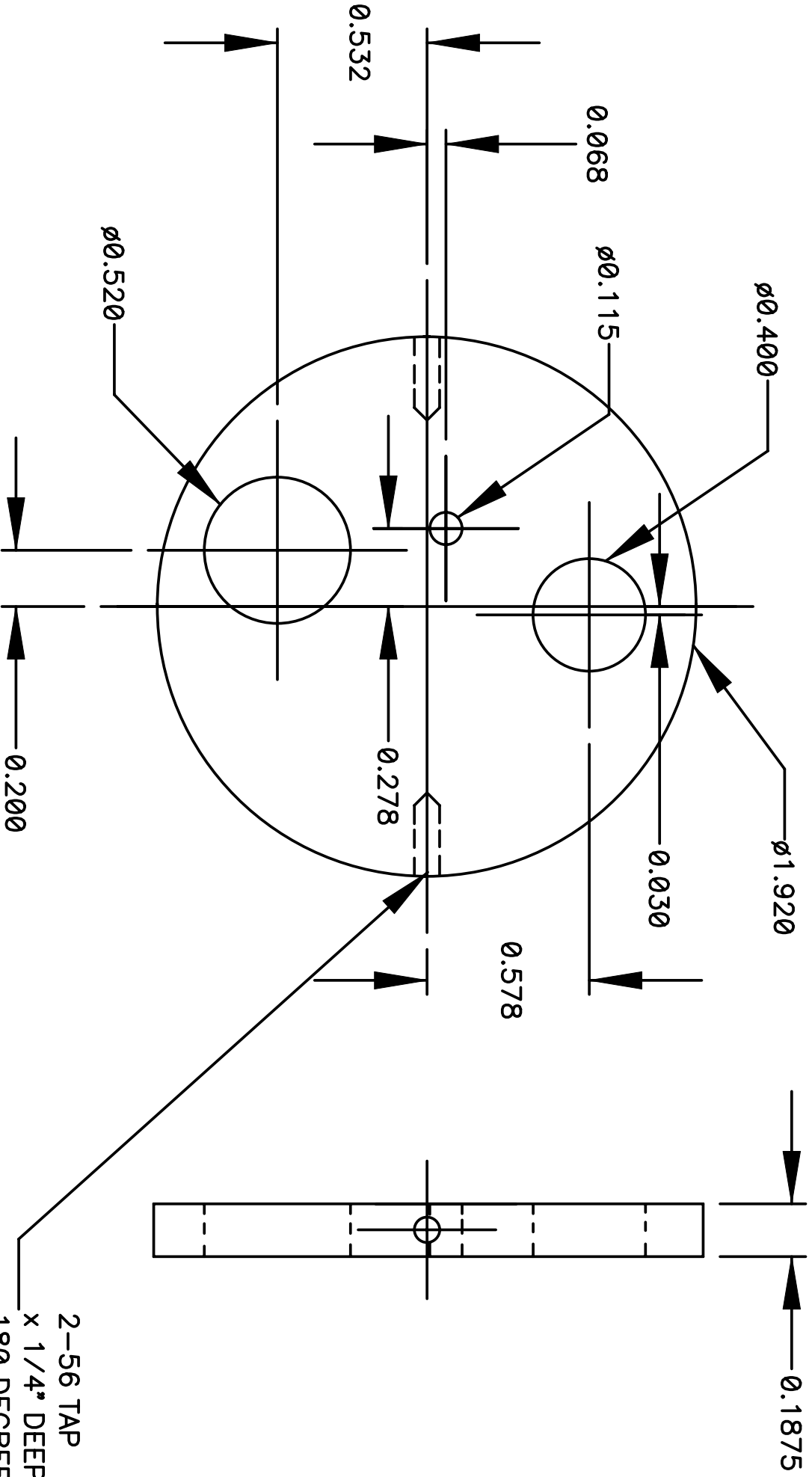


XP2262 – Attachement Block
Aluminum



XP2262 – COVER
 2" Tube Aluminum X 0.035" Wall
 Outside Black Anodize Finish

XP2262-**END CAP**
Aluminum
Bead Blast Finish



2-56 TAP
X 1/4" DEEP
180 DEGREE APART
ON C/L