

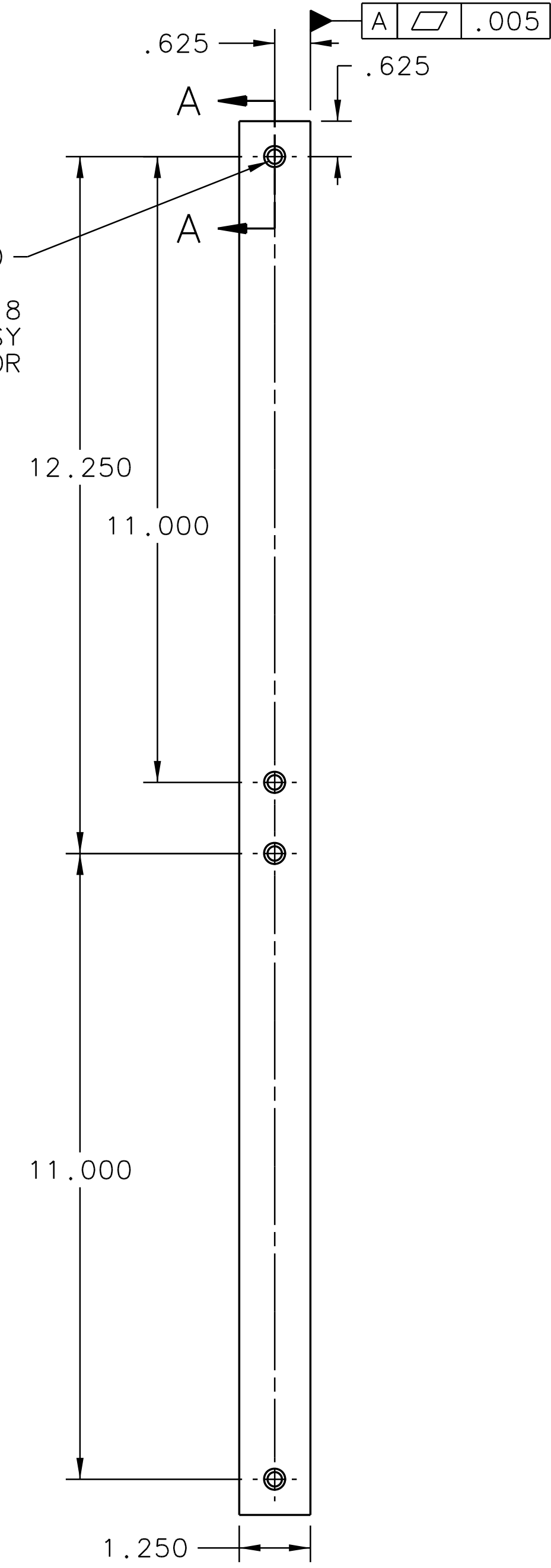
5  
8X  $\phi$ .344 THRU  
 $\phi$ .531  $\Psi$ .38  
 $\phi$ .014 G B C S  
(SHCS HOLES ARE BELOW DATUM B)

- 1. NO GAP LARGER THAN .002.
- 2. JLAB SUPPLIED MATERIAL IS MACHINED FLAT AND SQUARE TO TOLERANCE BELOW  
ITEM 1 2.500 +/- .002 x 8.000 +/- .010 x 12.250 +/- .002 SQUARE WITHIN .005  
ITEM 2 1.250 +/- .002 x 8.000 +/- .010 x 24.500 +/- .010 SQUARE WITHIN .005  
ITEM 3-6 1.520 +/- .002 x 2.513 +/- .002 x 24.900 +/- .010 SQUARE WITHIN .005 (QTY 2)
- 3. ADDITIONAL SURFACE MACHINING MAY BE REQUIRED TO ACHIEVE PRINT TOLERANCES.
- 4. ALIGN PLATES TO TOLERANCE SHOWN, INDICATE EXISTING HOLES AND MATCH REAM HOLES BEFORE FASTENING WITH ITEM 8. SKIM CUT ASSEMBLY IF NEEDED.
- 5. ALIGN PART WITH DATUMS B, C AND G COUNTBORE HOLES. INSTALL ITEM 7 AND 9.

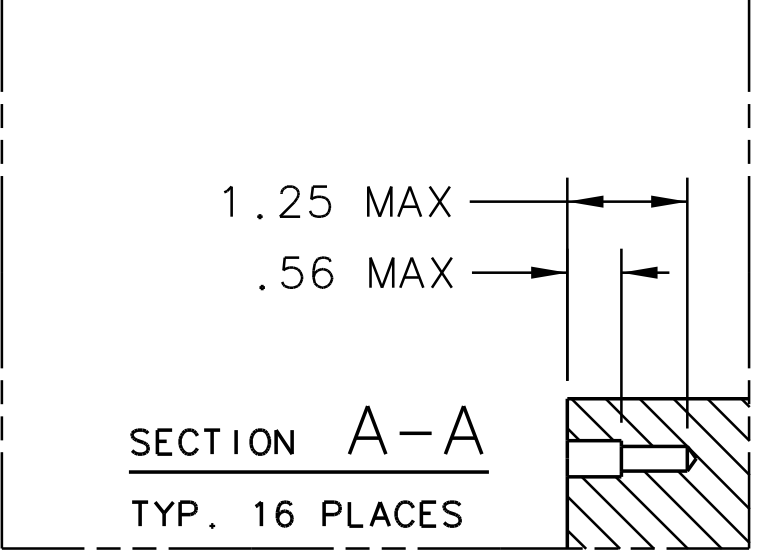
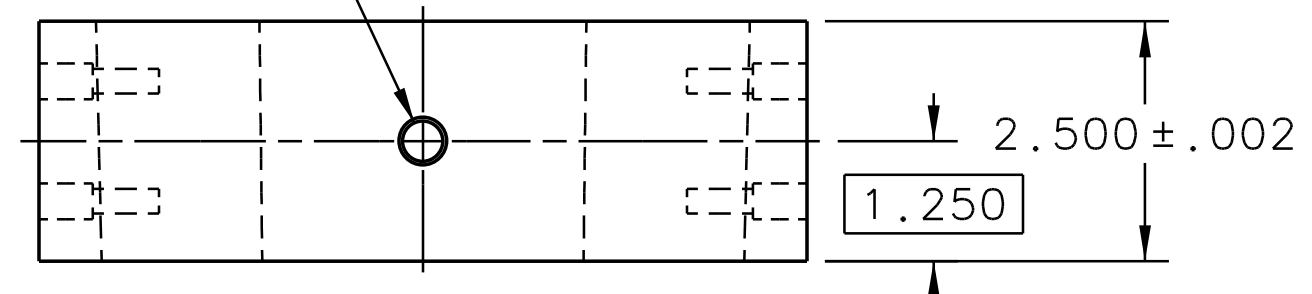
QTY	ITEM NO.	PART OR IDENTIFYING NO.	NOMENCLATURE OR DESCRIPTION	MATERIAL	NOTES
8	9	5/16-18 X 1.50L	SHCS	316 STAINLESS STEEL	-
16	8	-08	VENT SHOULDER SCREW	316 STAINLESS STEEL 5/16-18THD 3/8 DIA 2L*	-
4	7	-07	SPACER BLOCK	6061-T6 ALUMINUM	-
1	6	-06	RIGHT LOWER SIDE PLATE OPPOSITE	JLAB SUPPLIED TUNGSTEN HD-17 (MITECH)	-
1	5	-05	LEFT LOWER SIDE PLATE	JLAB SUPPLIED TUNGSTEN HD-17 (MITECH)	-
1	4	-04	RIGHT SIDE PLATE OPPOSITE	JLAB SUPPLIED TUNGSTEN HD-17 (MITECH)	-
1	3	-03	LEFT SIDE PLATE	JLAB SUPPLIED TUNGSTEN HD-17 (MITECH)	-
1	2	-02	LOWER PLATE	JLAB SUPPLIED TUNGSTEN HD-17 (MITECH)	-
1	1	-01	UPPER PLATE	JLAB SUPPLIED TUNGSTEN HD-17 (MITECH)	-

DOCUMENT CONTROL STAMP	DIN & TOI PER ASME Y14.5 UNLESS OTHERWISE SPECIFIED DIMENSIONS ARE IN INCHES TOLERANCES ARE FRACTIONS DECIMAL ANGLES 1/16 .001 .01 .05 .1 .25 .5 1 2 3 4 5 6 8 10 12 15 20 30 45 60 90 120 150 180	TRACKING NO. N/A	United States Department of Energy	Jefferson Lab Central Electron Accelerator Facility	Newport News Virginia
MATERIAL NOTED	THIRD ANGLE PROJECTION	APPROVALS DATE 05/01/13	HALL C SHMS SIV SLIT ASSEMBLY SIV SLIT MATERIAL ASSY		
FINISH MACHINED SURFACES DEBURR & BREAK ALL SHARP EDGES	UNLESS OTHERWISE NOTED	CHECKED	SCALE 1/2	SIZE (DWG. NO.) 67238-00006	REV. -
DO NOT SCALE DRAWING		APPROVED	ISO OR ASST NO. 67238-00003	SHEET 1 OF 3	

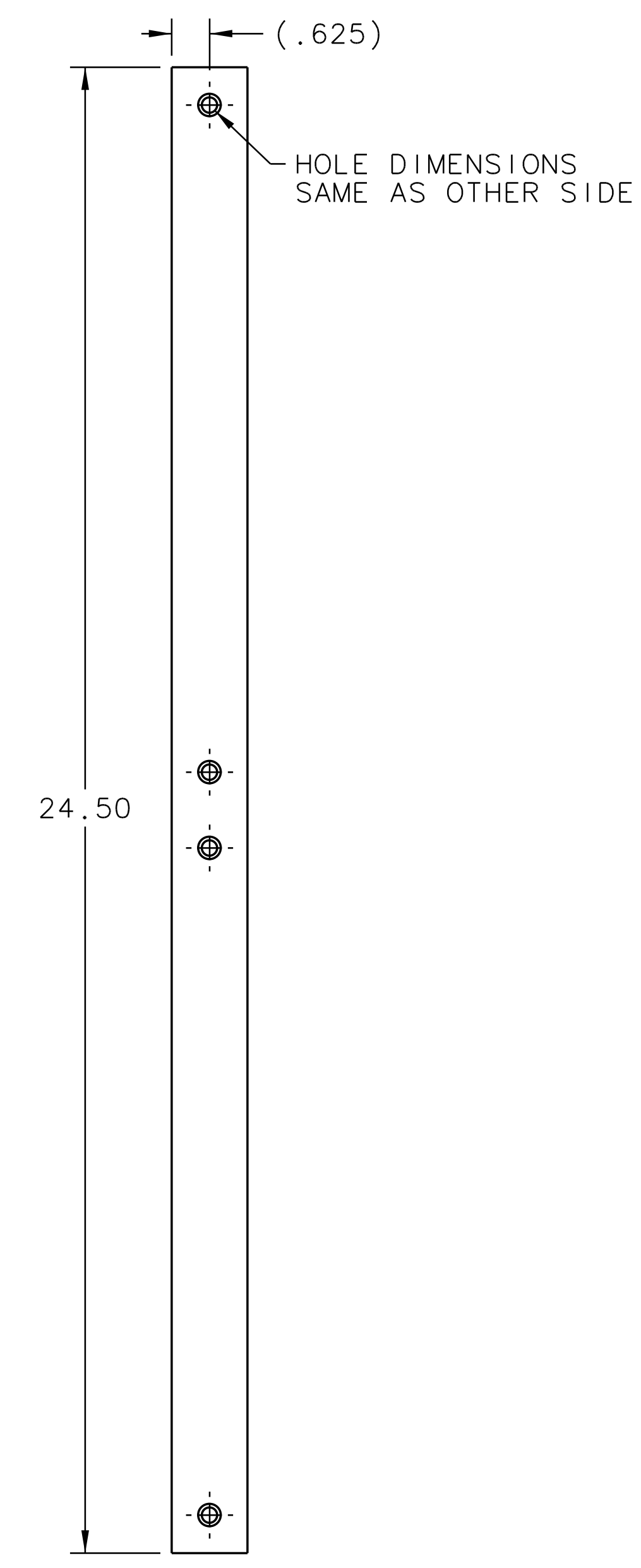
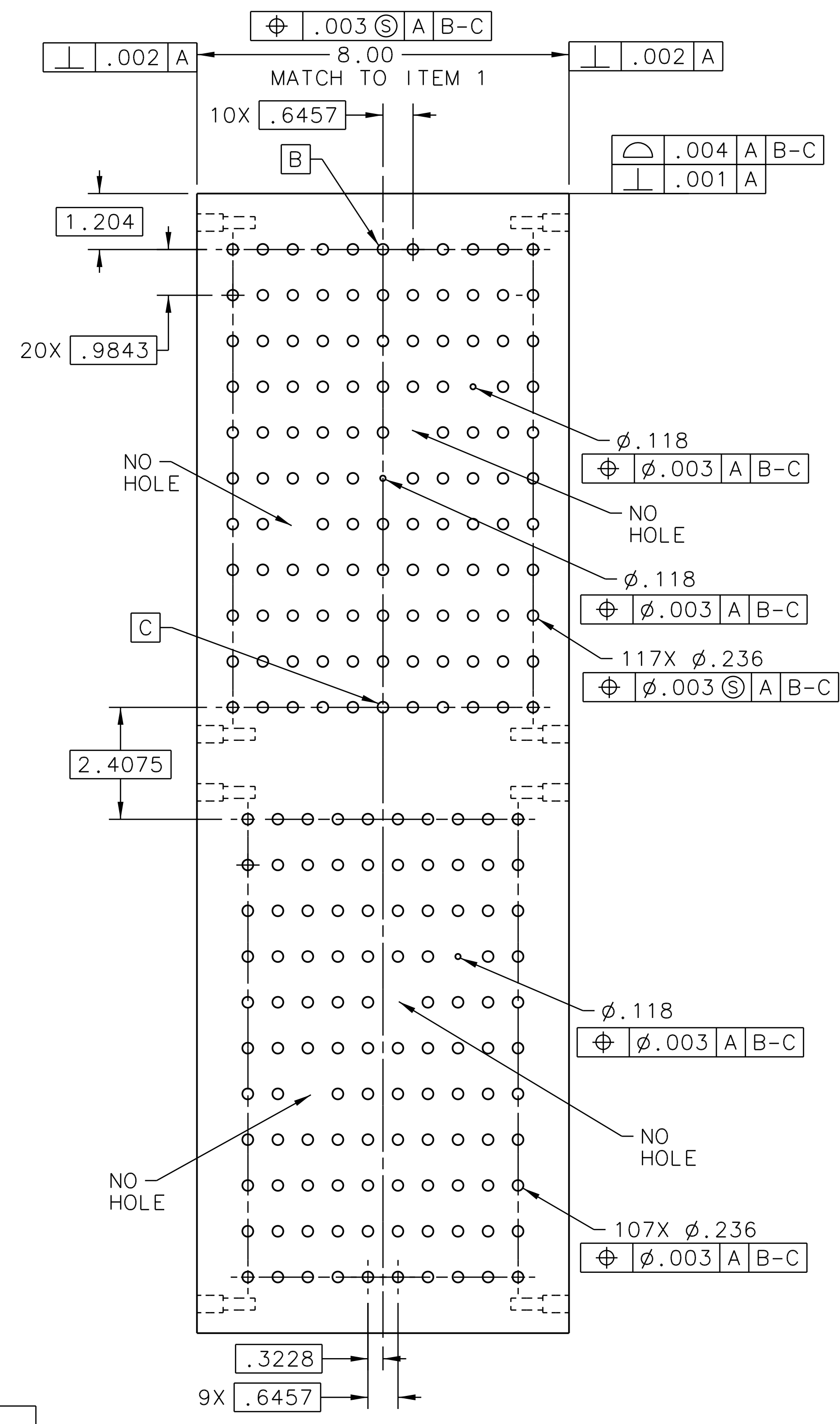
8X 5/16-18  $\nabla$  1.00  
L  $\phi$ .375  $\nabla$  .50  
SLIP FIT FOR ITEM 8  
FINISH REAM AT ASSY  
SEE SECTION A-A FOR  
MAX DRILL DEPTHS



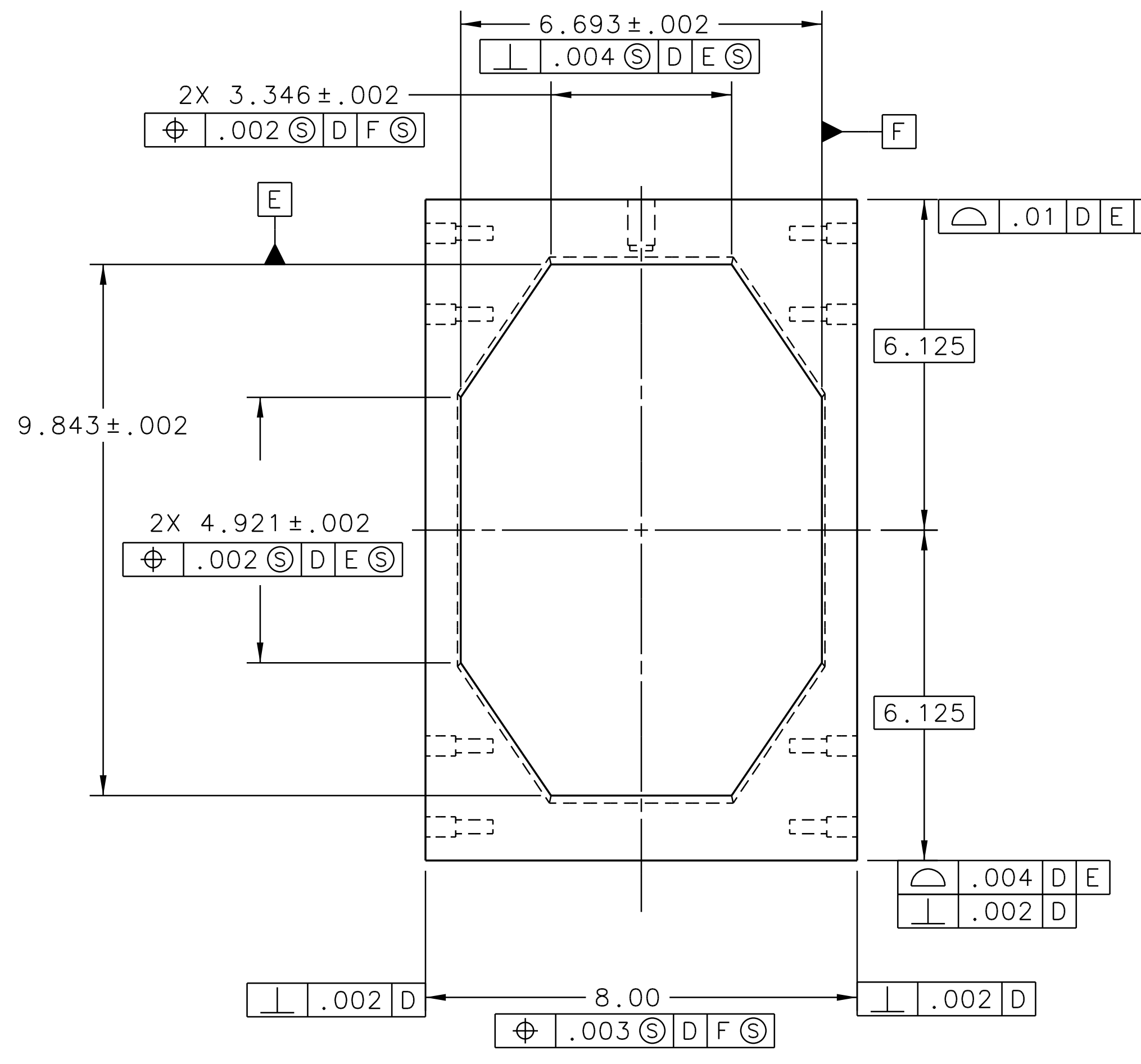
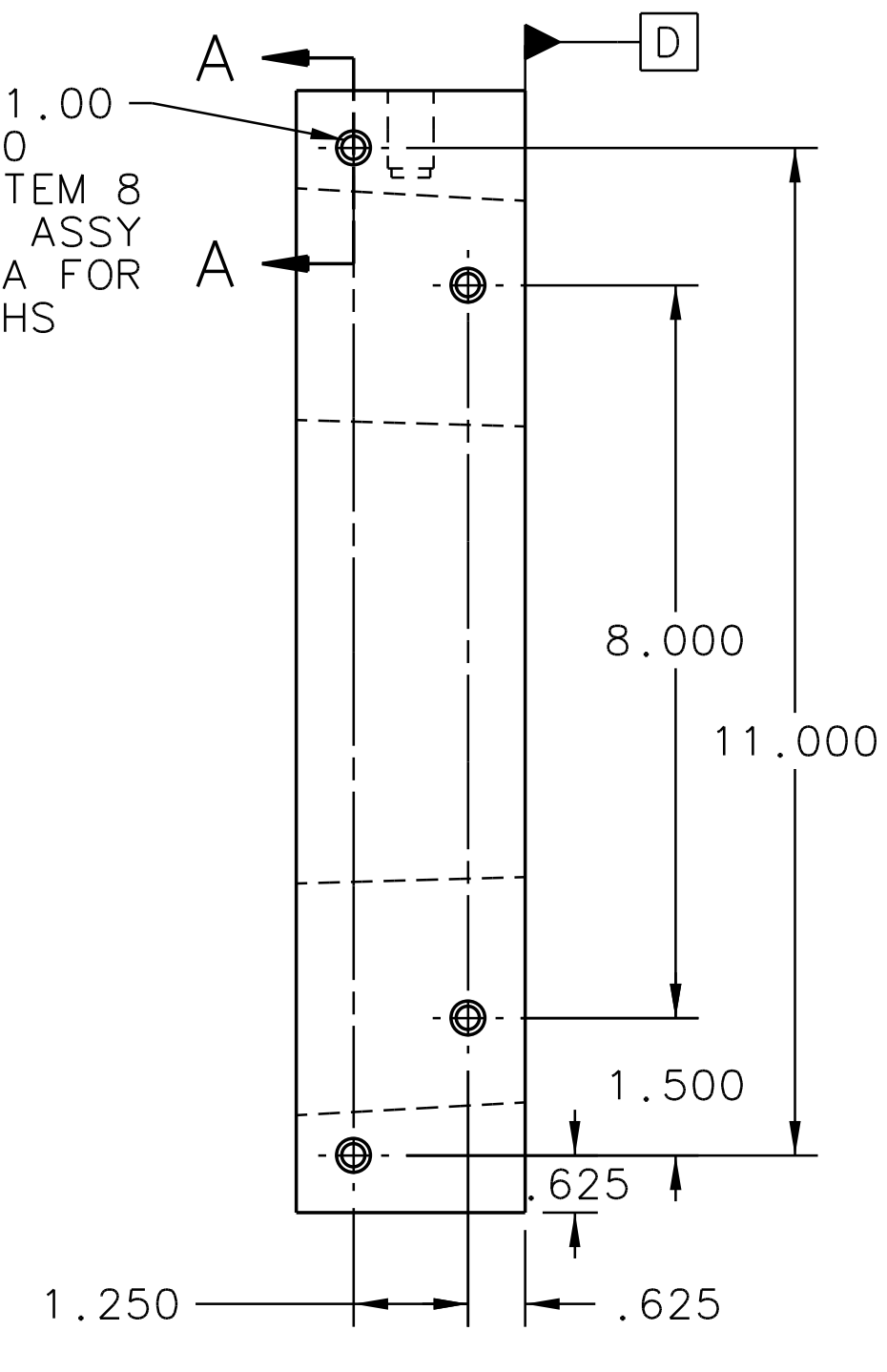
$\phi$ .422  $\nabla$  .95  
FLAT BOTTOM  
1/2-13  $\nabla$  .85  
 $\phi$ .014  $\odot$  D F  $\odot$



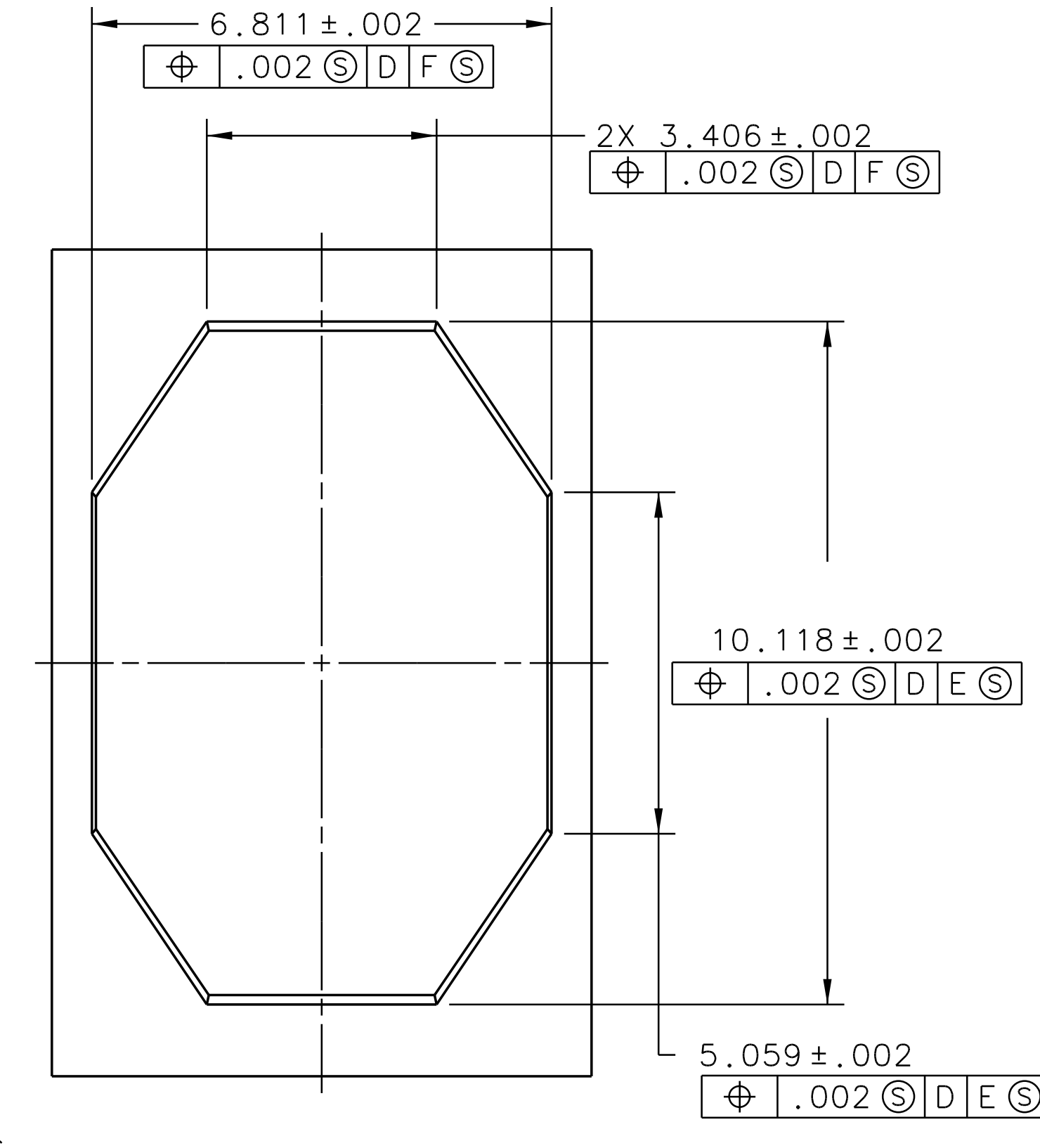
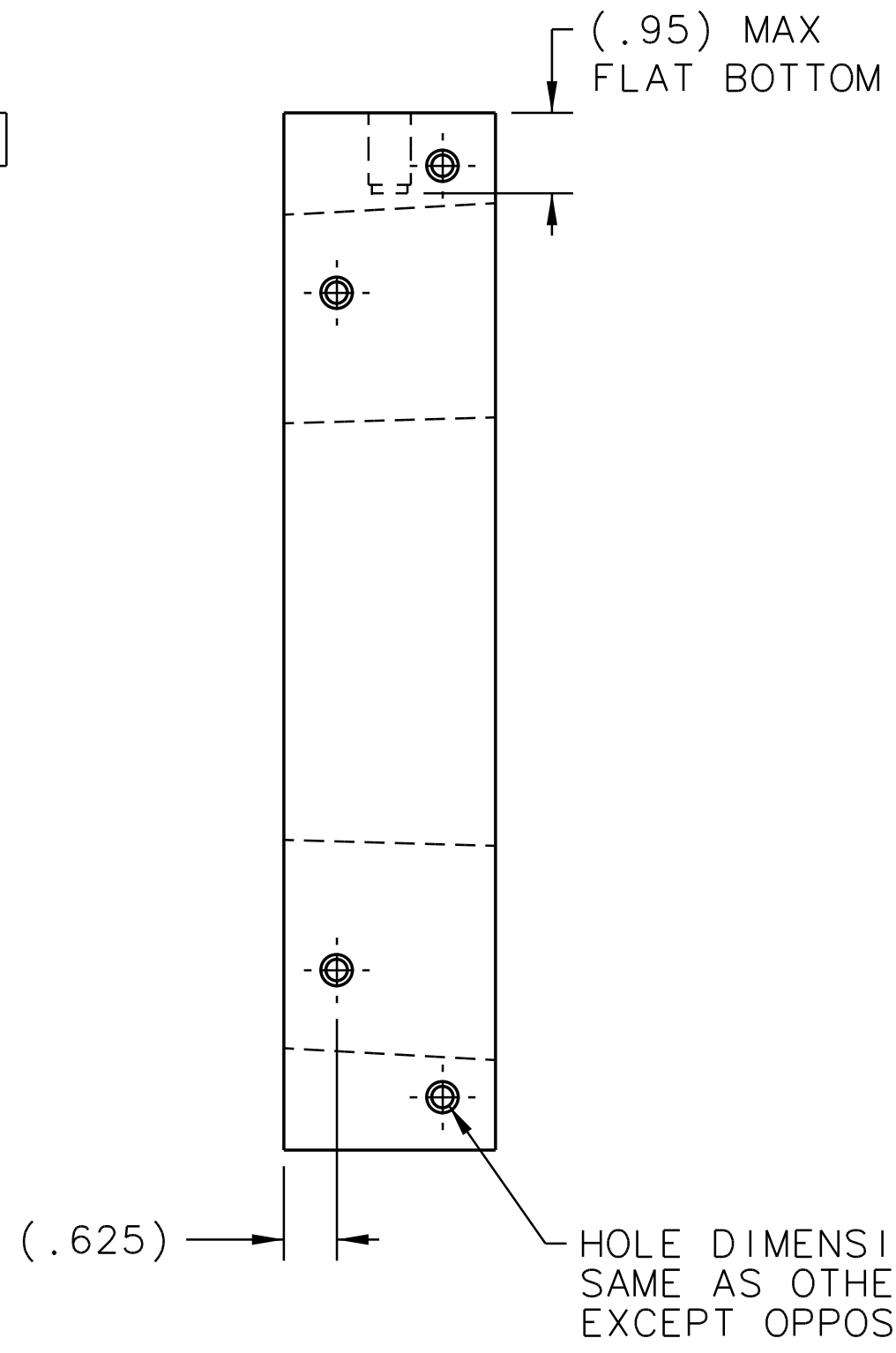
-02 LOWER PLATE



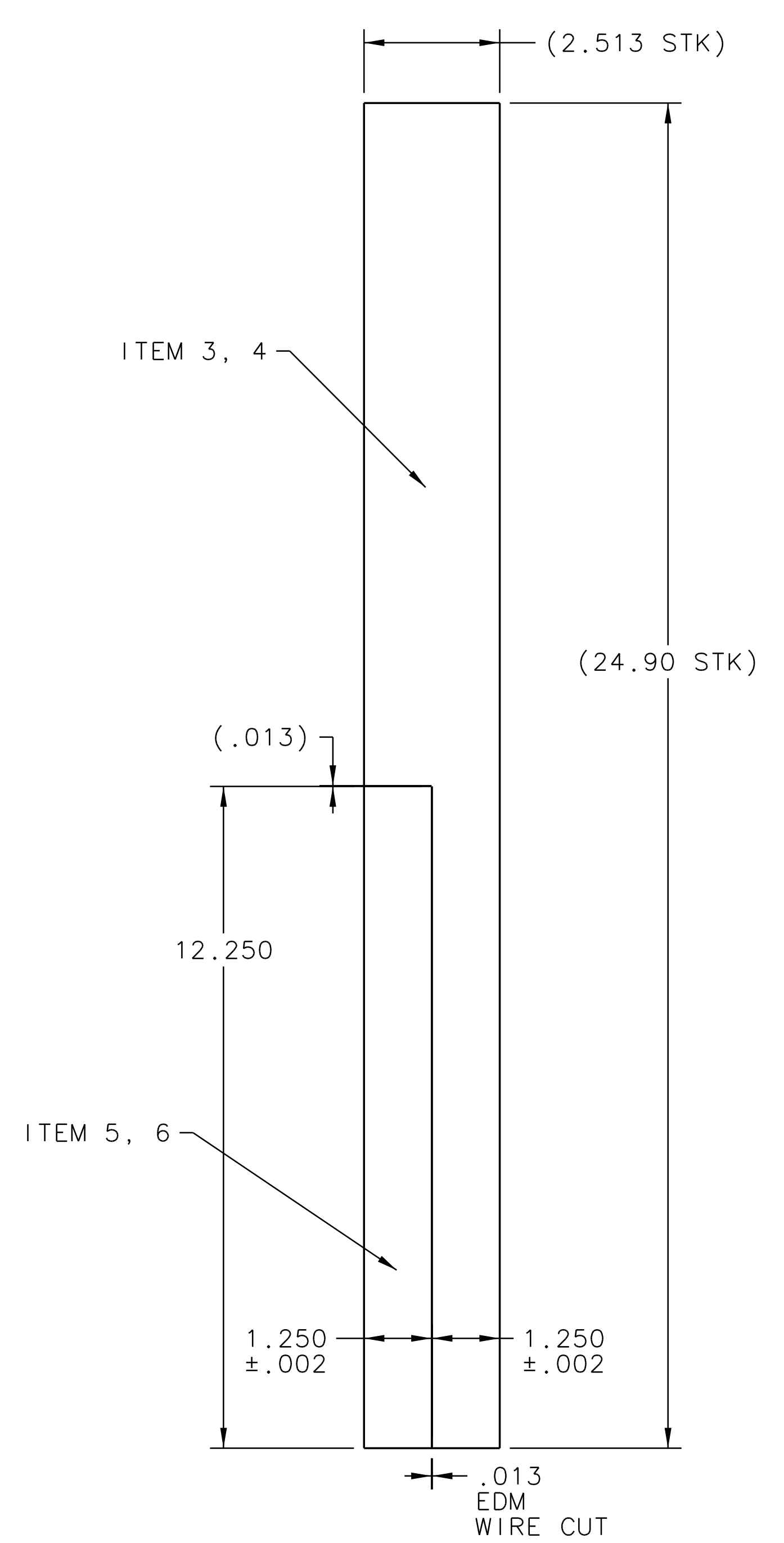
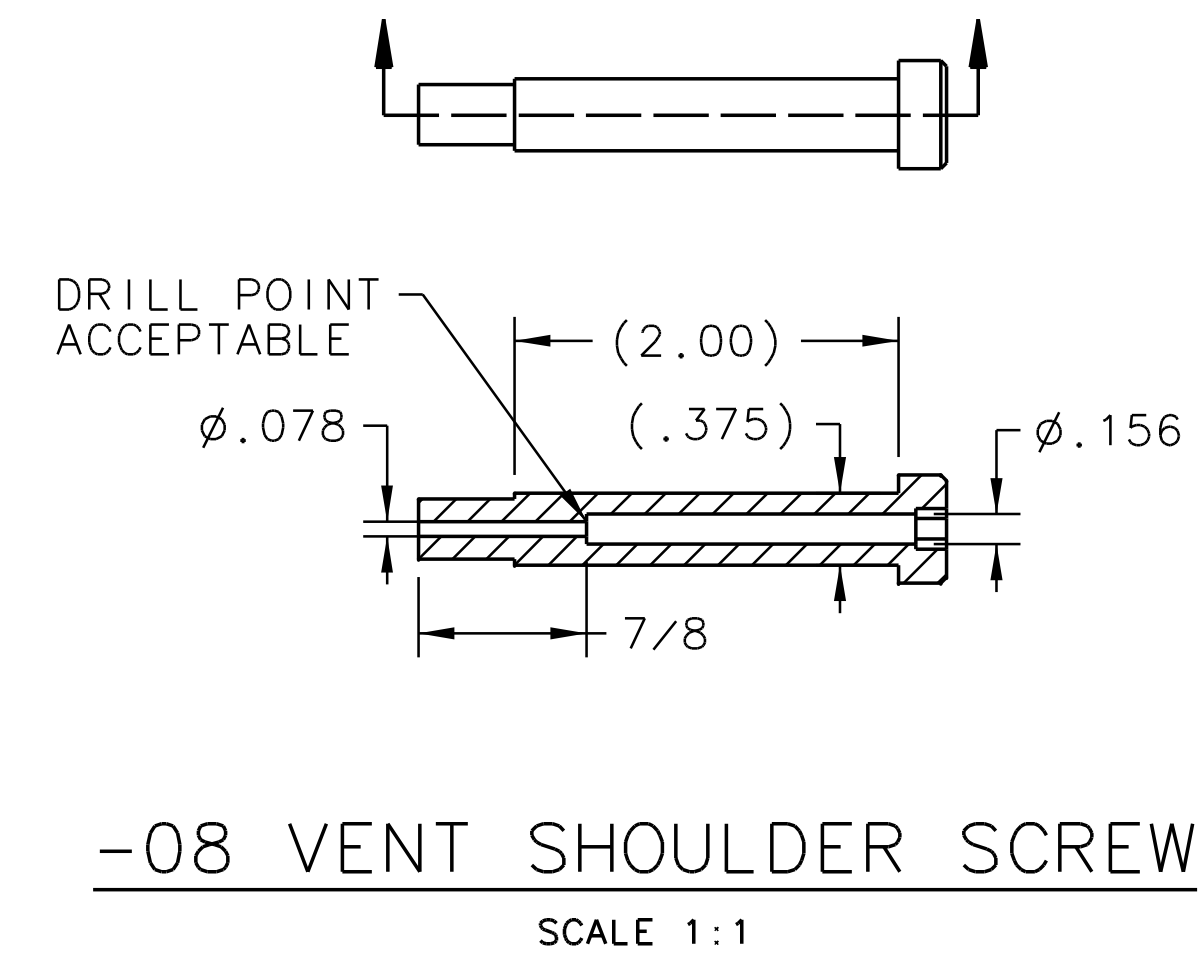
8X 5/16-18  $\nabla$  1.00  
L  $\phi$ .375  $\nabla$  .50  
SLIP FIT FOR ITEM 8  
FINISH REAM AT ASSY  
SEE SECTION A-A FOR  
MAX DRILL DEPTHS



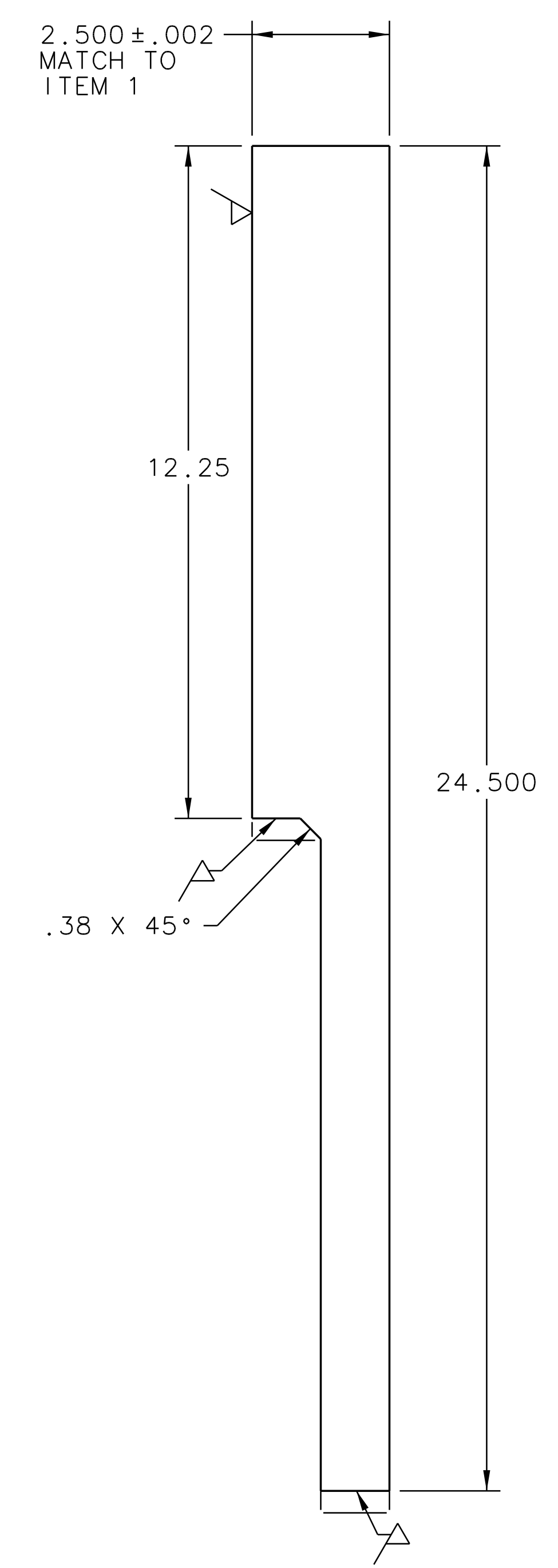
-01 UPPER PLATE  
FRONT VIEW



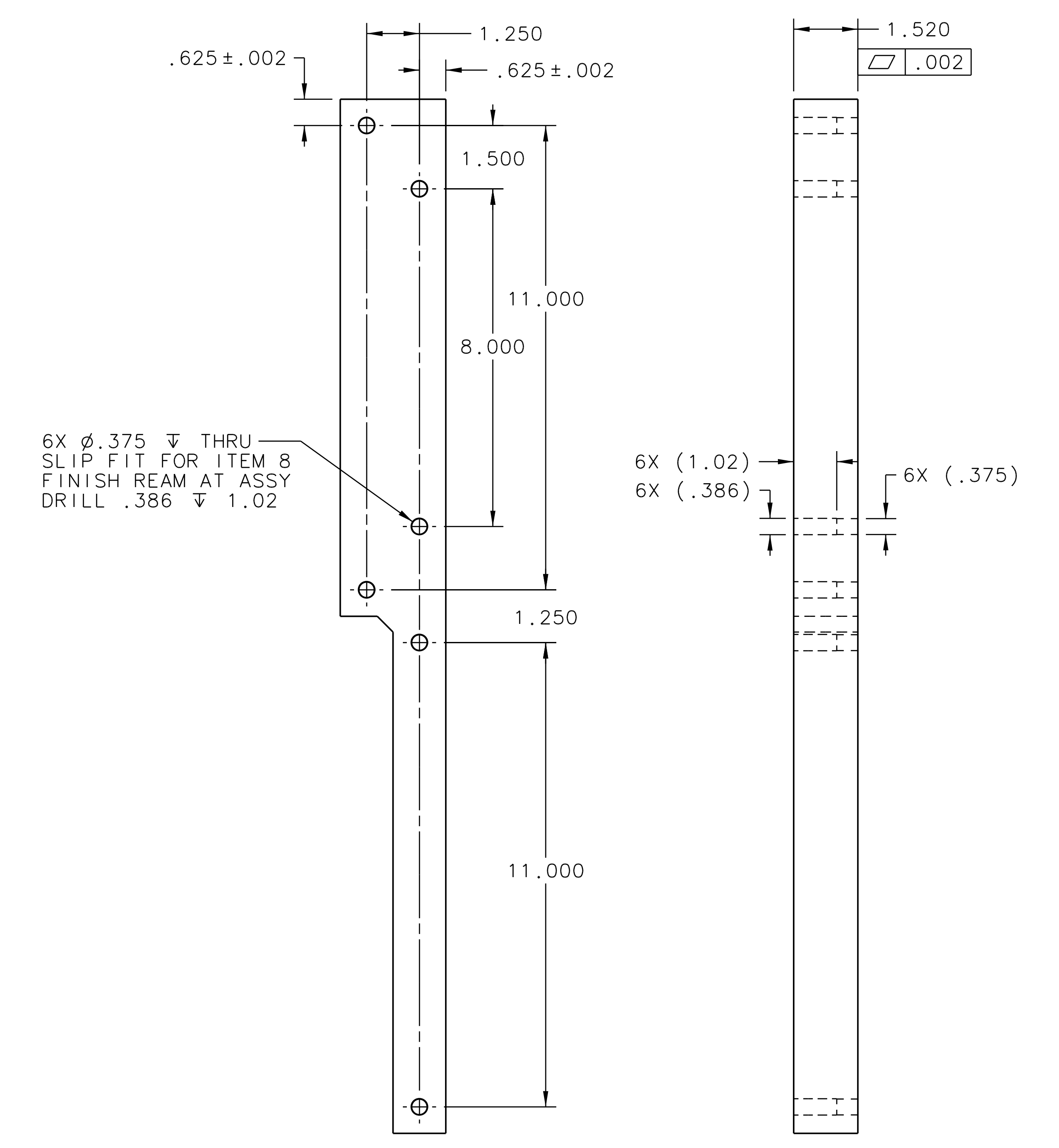
REAR VIEW



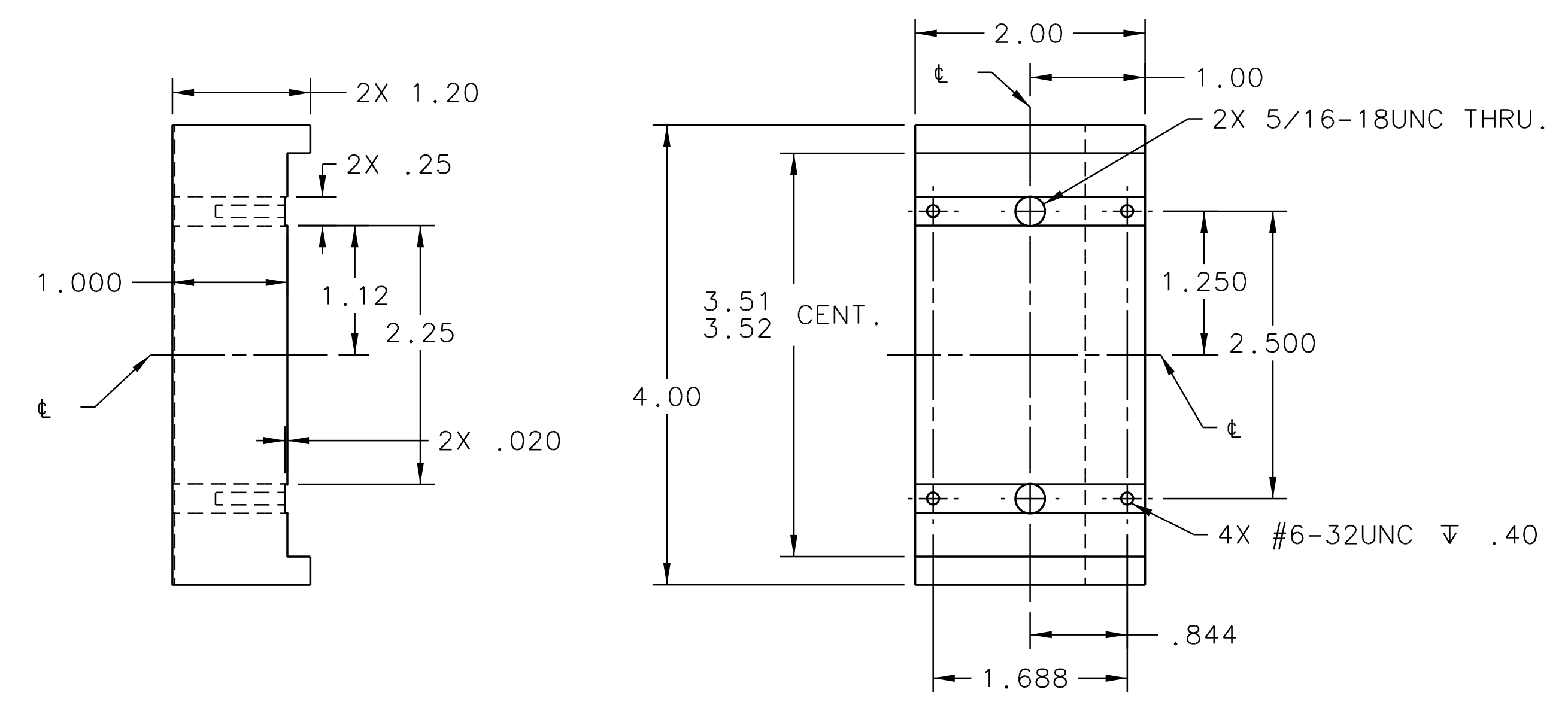
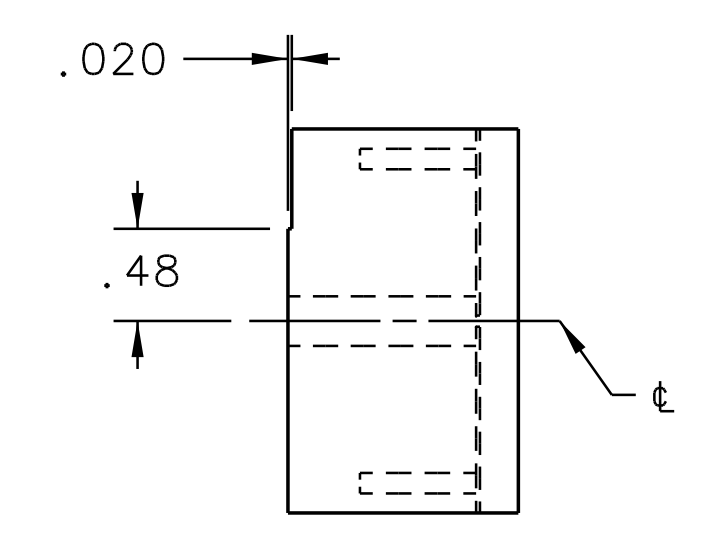
STEP ONE FOR ITEM 3 THRU 6



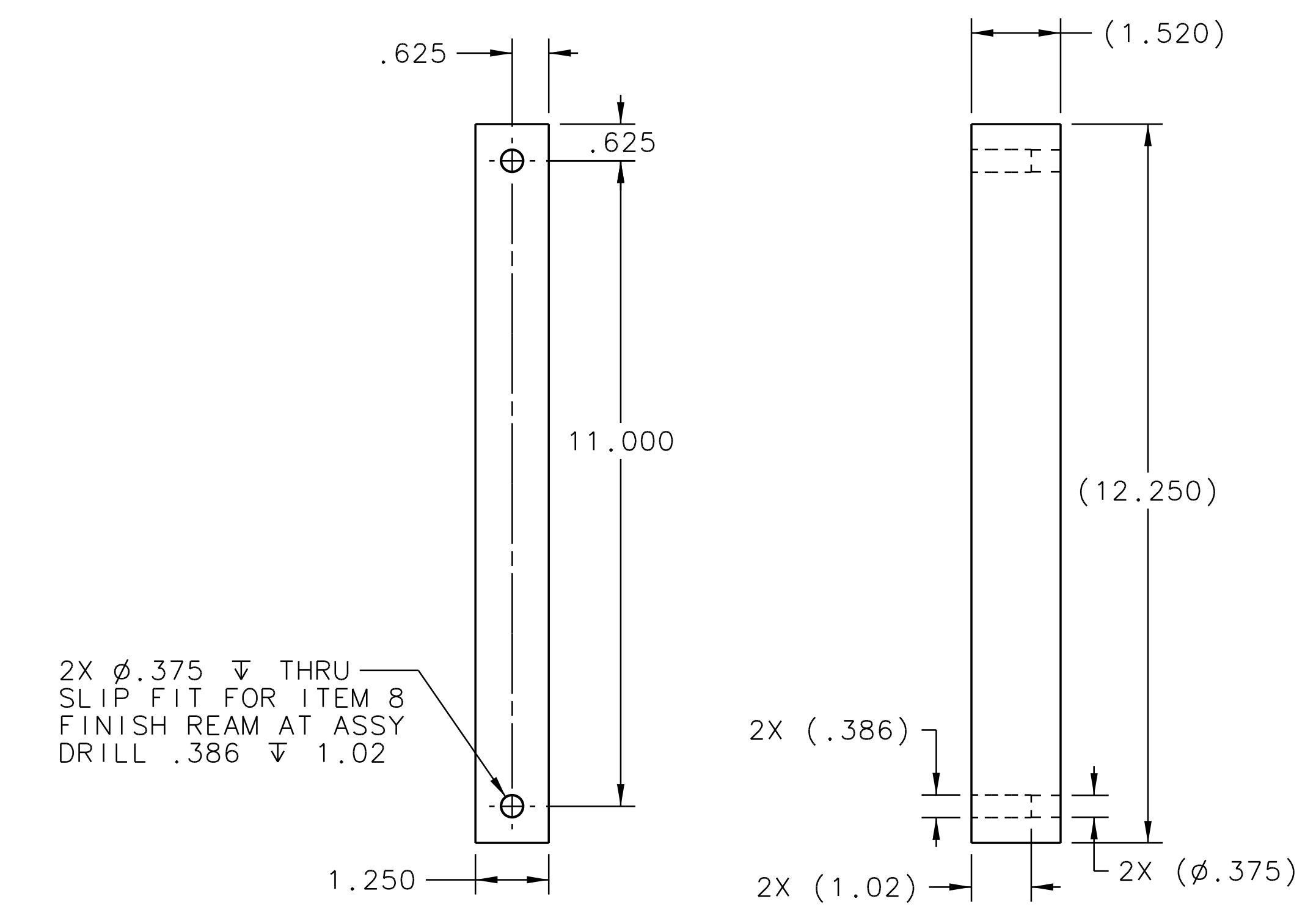
STEP TWO FOR ITEM 3, 4



-03 LEFT SIDE PLATE  
-04 RIGHT SIDE PLATE SAME AS -03 EXCEPT OPPOSITE  
FOR MATERIAL LAYOUT SEE STEP ONE



-07 SPACER BLOCK  
SCALE 1:1



-05 LEFT LOWER SIDE PLATE  
-06 RIGHT LOWER SIDE PLATE SAME AS -05 EXCEPT OPPOSITE  
FOR MATERIAL LAYOUT SEE STEP ONE