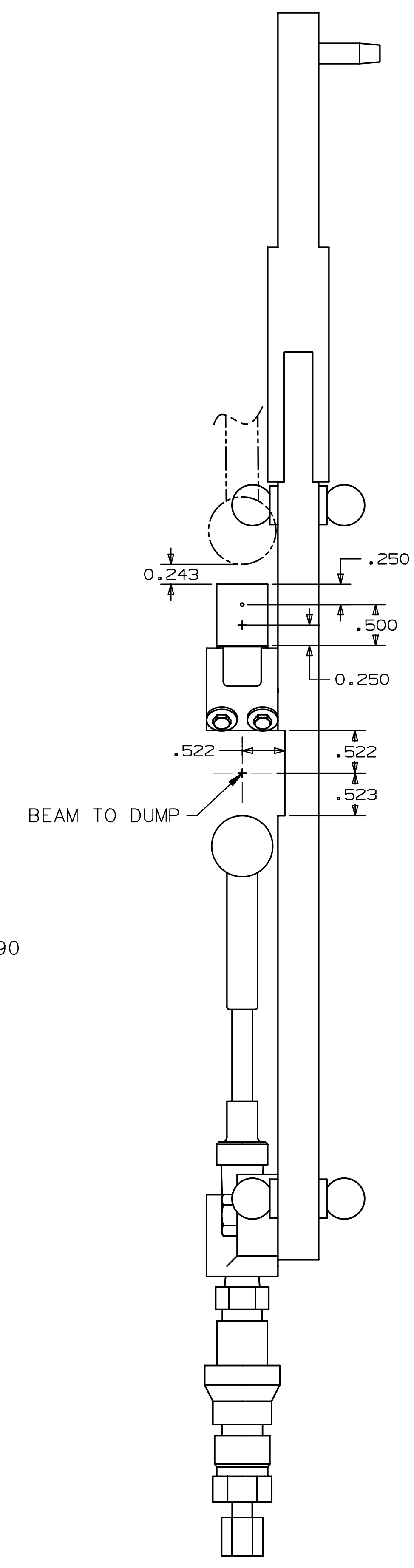
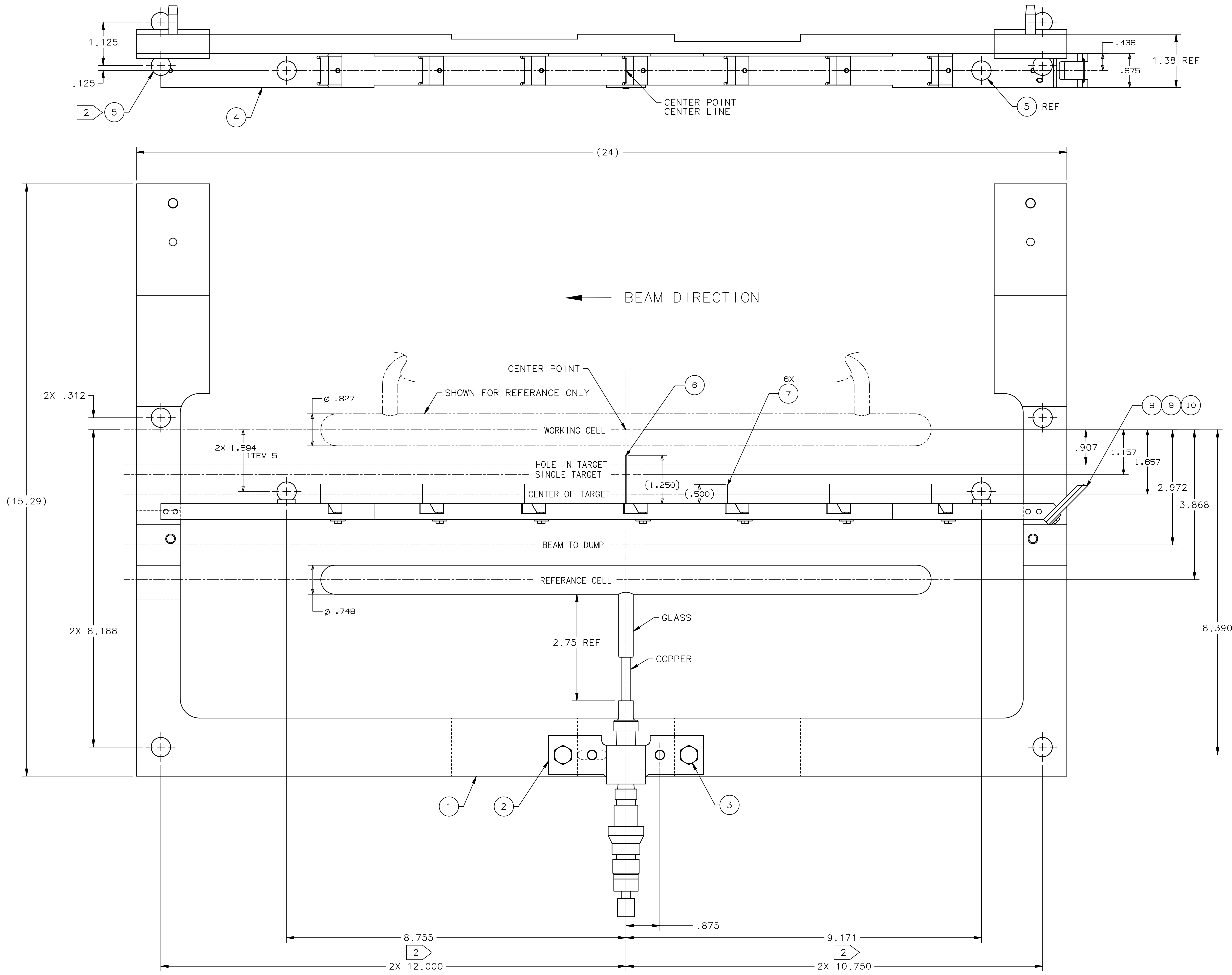


REVISION HISTORY				
ZONE	REV	DESCRIPTION	DATE	APPROVED
-	A	REFERENCE CELL MOVED DOWN .250 UPDATED DRAWING AND DIMENSIONS	6/23/16	
-	B	CHANGED PART NUMBER ITEM 2	8/17/16	
-	C	DESIGN CHANGE ADDED ITEMS AND NOTES	4/9/18	BCM



- NOTES:**
- WEIGHT IS APPROXIMATELY 3.4 LBS.
 - 9 TOOLING BALLS ARE SHOWN & LOCATED FOR ALIGNMENT PURPOSES. ONLY 4 TOOLING BALLS PER LADDER PLATE (ITEM 1) CAN BE USED AT ANY ONE TIME.
 - REMOVE ALL TOOLING BALLS BEFORE USE.
 - FOR ITEMS NOT LISTED ON THIS DRAWING SEE A06010-03-04-1100.

QTY REQD	ITEM NO.	PART OR IDENTIFYING NO.	DESCRIPTION OR PARTS LIST	MATERIAL SPECIFICATION	NOTES	QTY REQD	ITEM NO.	PART OR IDENTIFYING NO.	DESCRIPTION OR PARTS LIST	MATERIAL SPECIFICATION	NOTES
	6	7	67507-00087-02	CARBON TARGET							
	1	6	67507-00087-01	CARBON TARGET W/HOLE							
	4	5	McMASTER-CARR 31325A27	SHOULDER TOOLING BALL 1/2 BALL DIA.						STEEL	
	1	4	A06010-03-04-1100	CALIBRATION TARGET ASSY							
	1	8	67507-00089-01	BeO MOUNTING PLATE							
	1	9	67507-00089-02	BeO TARGET HOLDER							
	2	3	McMASTER-CARR 94555A319	HEX HEAD SCREW 1/4-20 UNC x 3/4 LG						CERAMIC	
	1	2	67507-00057	REFERENCE CELL ASSY							
	1	1	67507-00037	LADDER PLATE MODIFICATION							

United States Department of Energy
Jefferson Lab
 Newport News Virginia

HALL C
 A1N
 TARGET LADDER ASSY

SCALE 1:1
 SHEET 1 OF 1

DATE 6/06/16
 DRAWN METZGER
 CHECKED

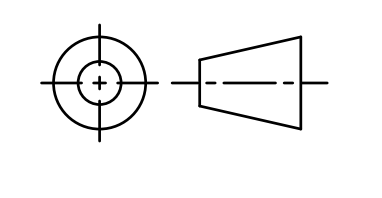
APPROVED

SIZE (DWG. NO.)
E
 67507-00047

REV. C

In accordance with the Jefferson Lab ESH&Q manual Subject Matter Expert(SME) signatures may be required

DOCUMENT CONTROL STAMP
 FINISH MACHINED SURFACES DEBURR & BREAK ALL SHARP EDGES
 UNLESS OTHERWISE NOTED



TRACKING NO. N/A
 APPROVALS
 DATE 6/06/16

DO NOT SCALE DRAWING