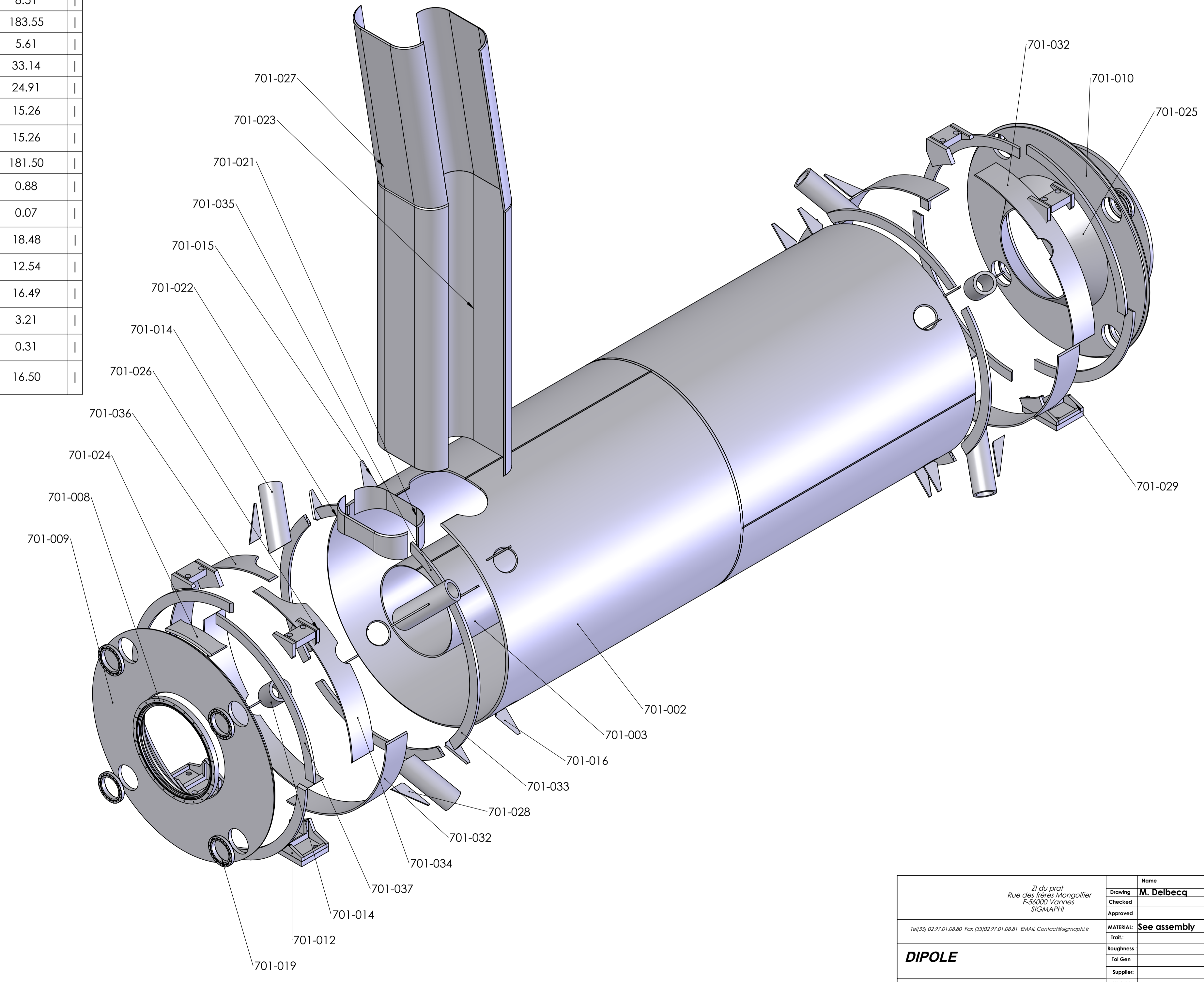
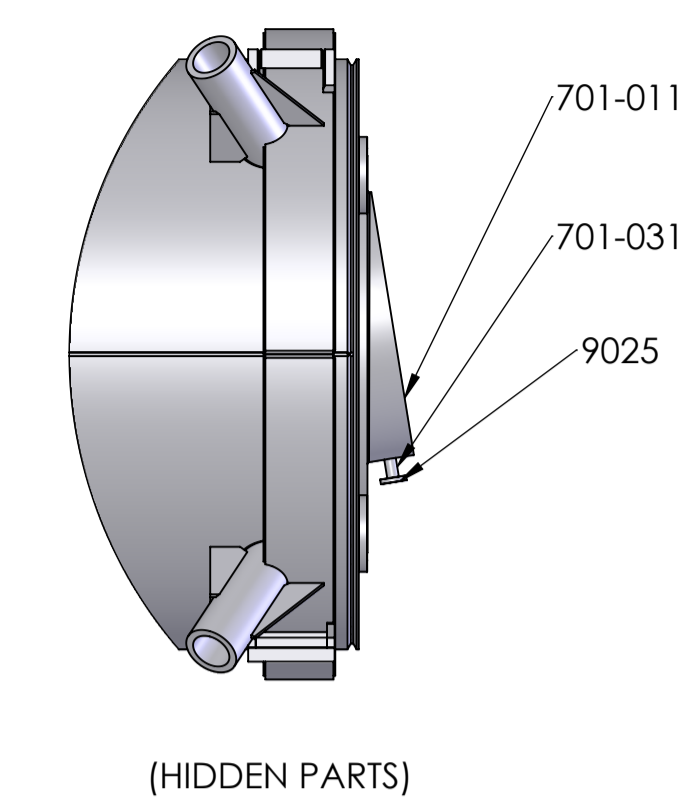
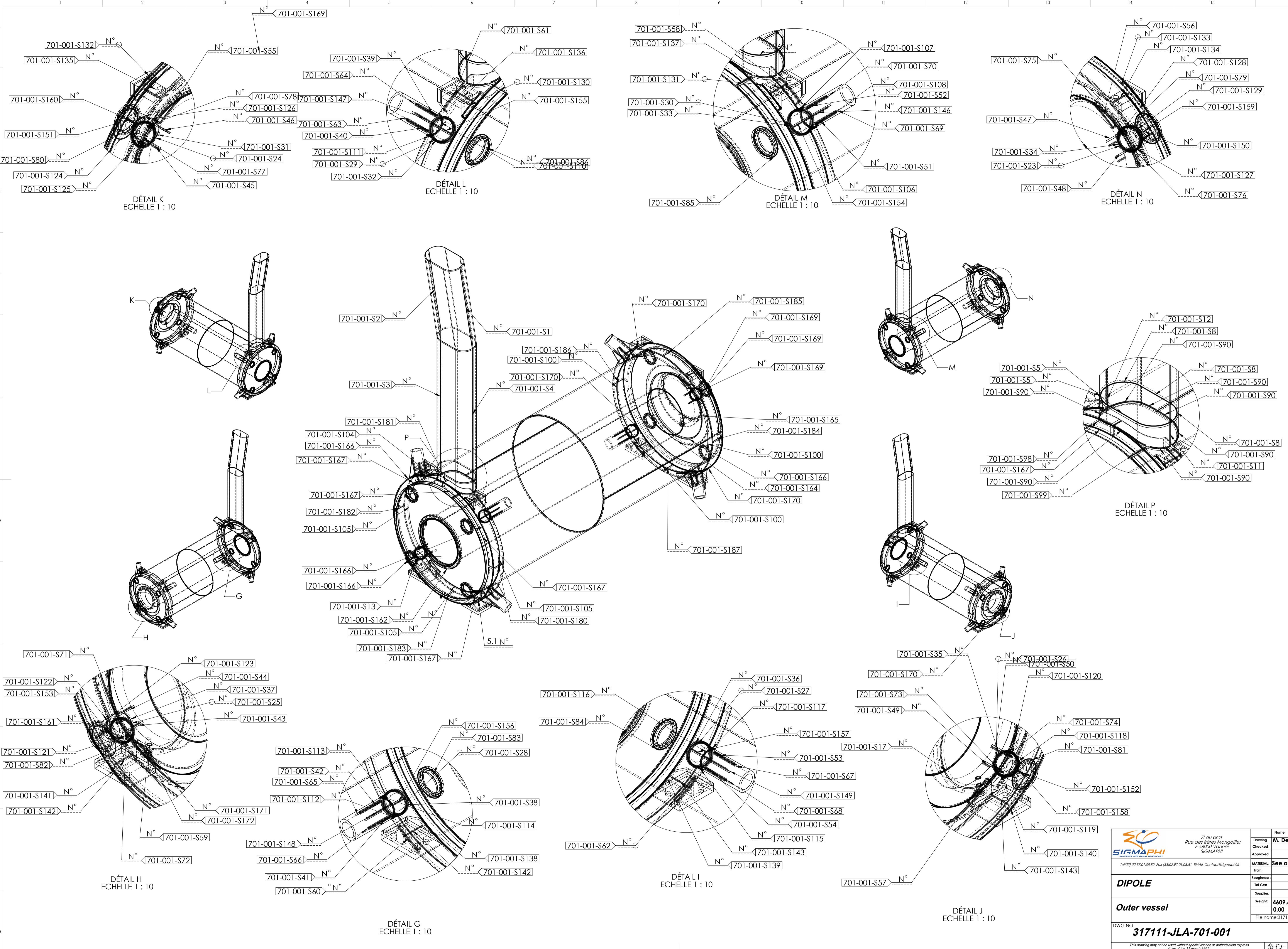


REP	REFERENCE	DESIGNATION	QTY	REV	MATERIAL	MASS (Kg)
701-002	317111-JLA-701-002	OUTER SHELL	1	G	304L (X2CrNi18-9)	2273.15
701-003	317111-JLA-701-003	INNER SHELL	1	F	304L (X2CrNi18-9)	465.93
701-037	317111-JLA-701-037	Stiffening part #37	8	A	304L (X2CrNi18-9)	14.04
701-008	317111-JLA-701-008	Beam tube flange AFT	1	D	304L (X2CrNi18-9)	25.07
701-009	317111-JLA-701-009	Outer flange AFT	1	E	304L (X2CrNi18-9)	272.29
701-010	317111-JLA-701-010	Outer flange FWD	1	E	304L (X2CrNi18-9)	227.44
701-011	317111-JLA-701-011	Beam tube flange FWD	1	E	304L (X2CrNi18-9)	170.24
701-012	317111-JLA-701-012	Pad Right	2	F	304L (X2CrNi18-9)	24.91
701-014	317111-JLA-701-014	support tube	8	F	304L (X2CrNi18-9)	24.86
701-015	317111-JLA-701-015	Gusset	8	E	304L (X2CrNi18-9)	0.84
701-016	317111-JLA-701-016	Gusset 2	8	E	304L (X2CrNi18-9)	0.84
701-019	317111-JLA-701-019	Transport adaptor flange	8	D	304L (X2CrNi18-9)	2.99
701-021	317111-JLA-701-021	Neck 2	1	C	304L (X2CrNi18-9)	8.51
701-022	317111-JLA-701-022	Neck 1	1	C	304L (X2CrNi18-9)	8.51
701-023	317111-JLA-701-023	NECK #23	1	C	304L (X2CrNi18-9)	183.55
701-024	317111-JLA-701-024	Patch	1	D	304L (X2CrNi18-9)	5.61
701-025	317111-JLA-701-025	Cone	1	E	304L (X2CrNi18-9)	33.14
701-029	317111-JLA-701-029	Pad Left	2	C	304L (X2CrNi18-9)	24.91
701-026	317111-JLA-701-026	Up pad right	2	E	304L (X2CrNi18-9)	15.26
701-030	317111-JLA-701-030	Up pad Left	2	C	304L (X2CrNi18-9)	15.26
701-027	317111-JLA-701-027	NECK #27	1	C	304L (X2CrNi18-9)	181.50
701-028	317111-JLA-701-028	front gusset	8	C	304L (X2CrNi18-9)	0.88
701-031	317111-JLA-701-031	Tube for flange	1	A	304L (X2CrNi18-9)	0.07
701-032	317111-JLA-701-032	Stiffening part #32	6	A	304L (X2CrNi18-9)	18.48
701-033	317111-JLA-701-033	Stiffening part #33	7	A	304L (X2CrNi18-9)	12.54
701-034	317111-JLA-701-034	Stiffening part #34	1	A	304L (X2CrNi18-9)	16.49
701-035	317111-JLA-701-035	Stiffening part #35	2	A	304L (X2CrNi18-9)	3.21
9025	MDC-110012	Flange 2.75"x1"	1		304L (X2CrNi18-9)	0.31
701-036	317111-JLA-701-036	Stiffening part #36	1	A	304L (X2CrNi18-9)	16.50



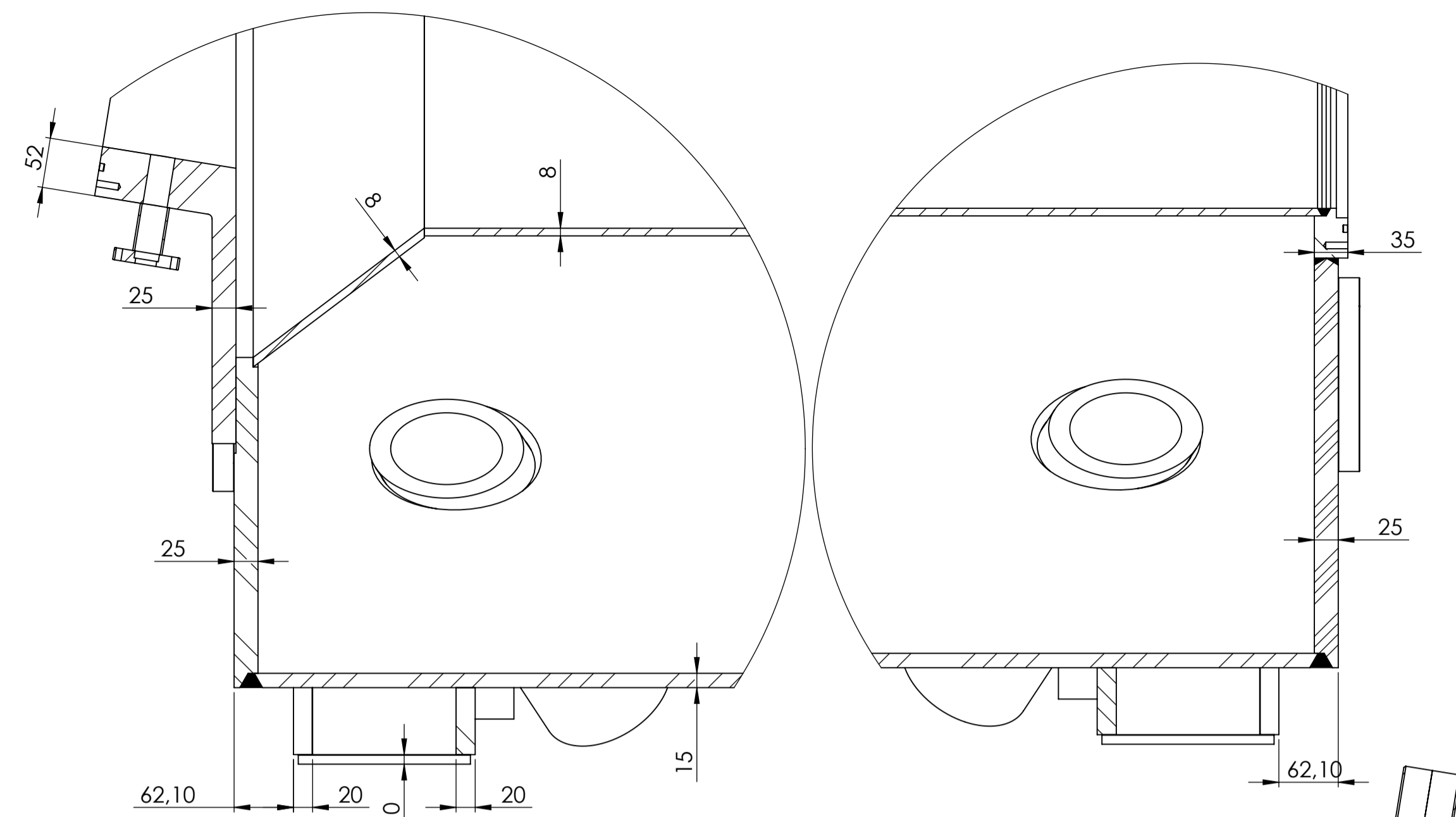
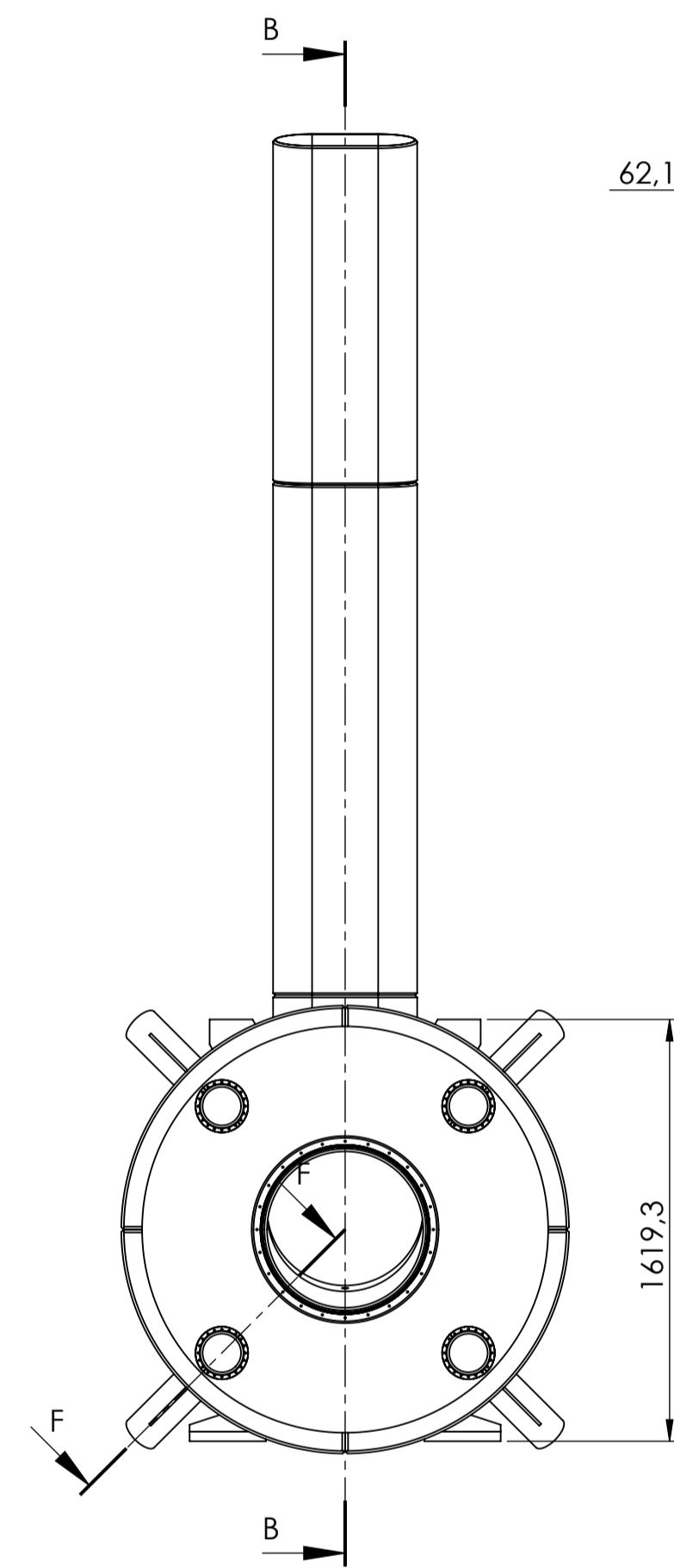
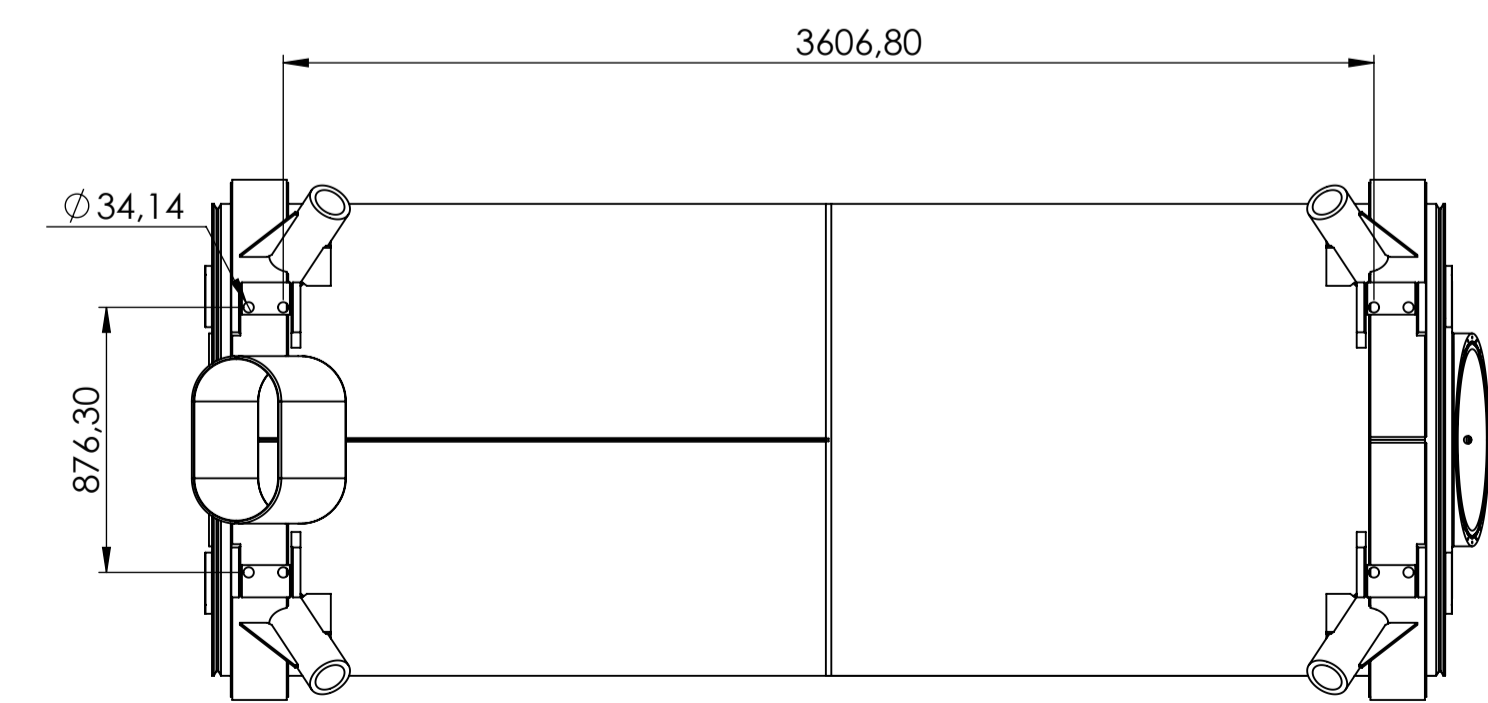
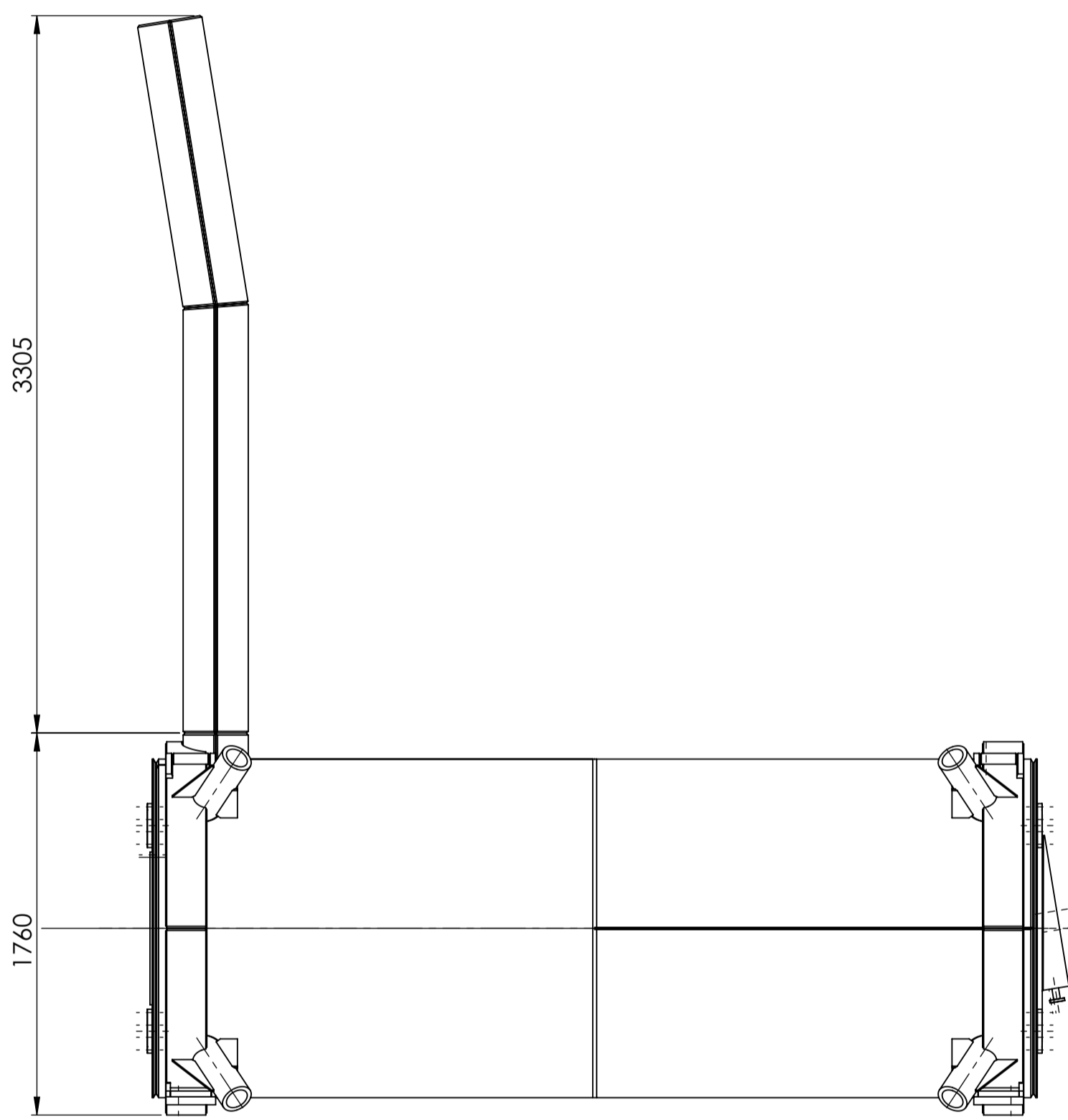
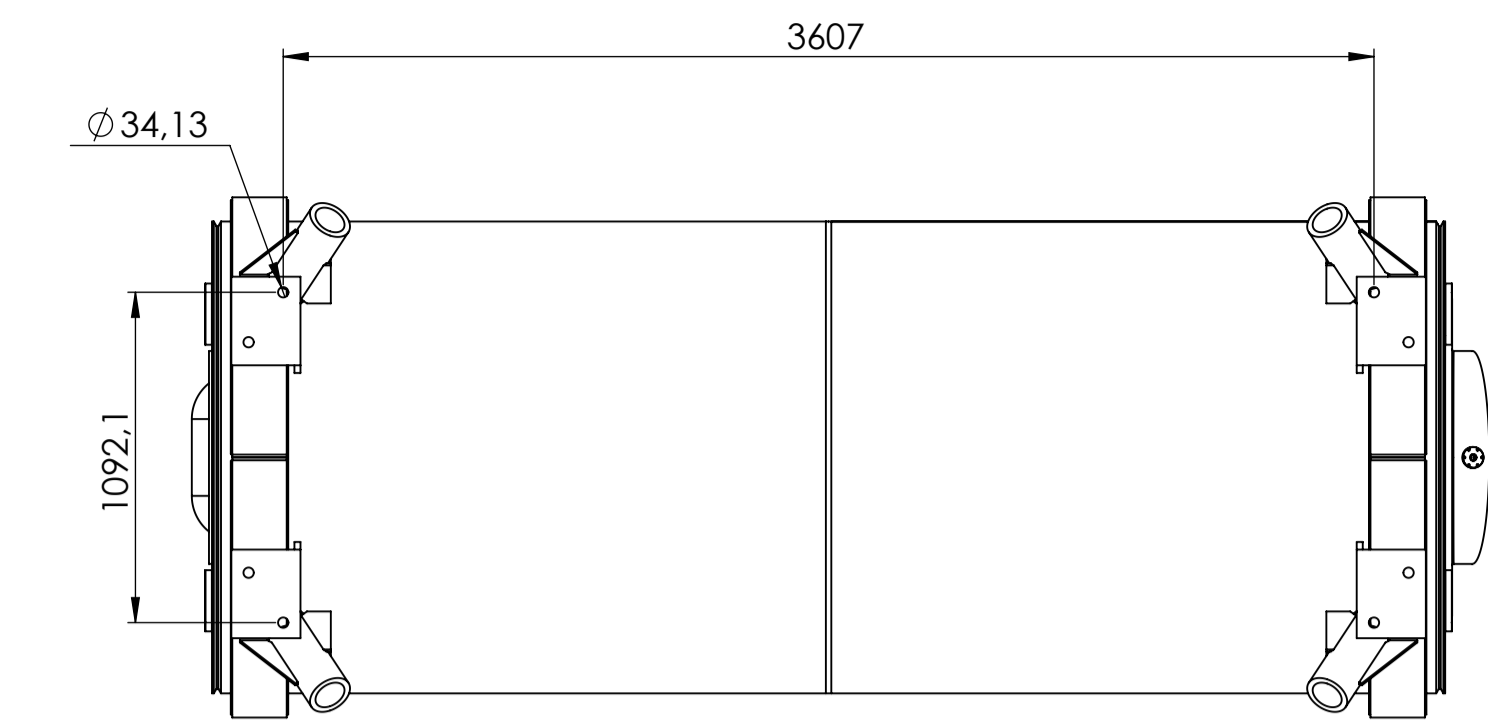
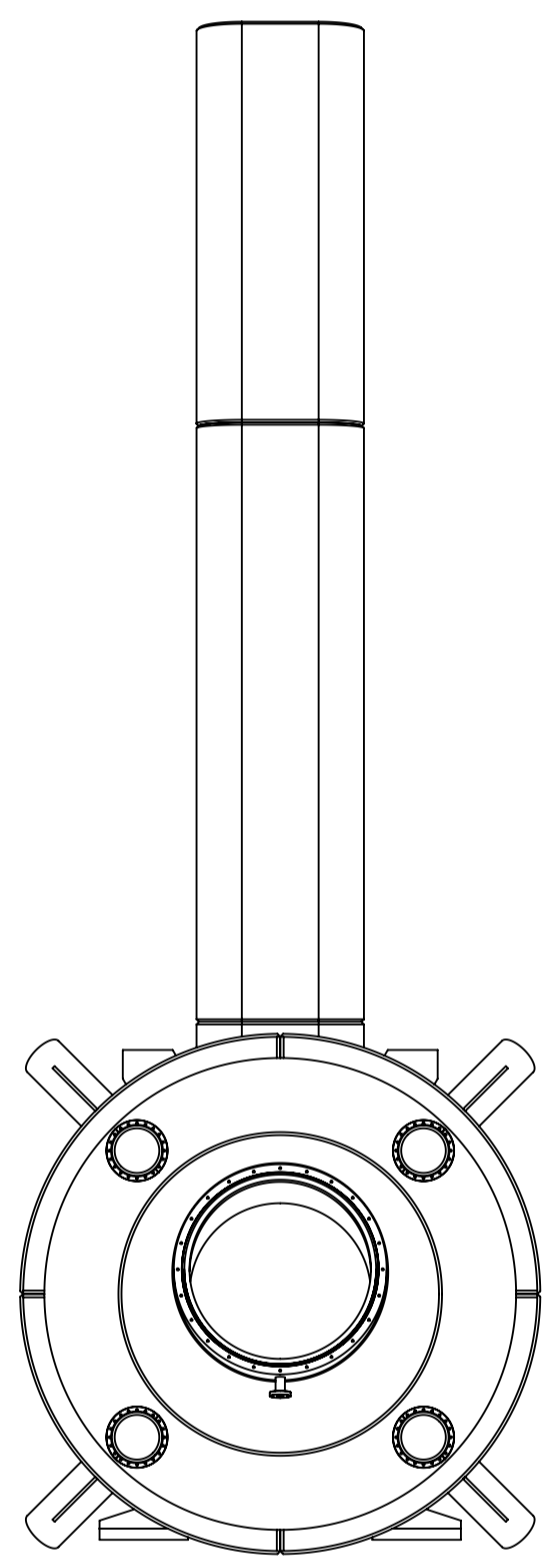
NOTE:
- Vessel under vacuum at 300°K.
- Design pressure: 1.5atm absolute at 300°K.
- Design and manufacturing according to AMSE BPV.

<i>Zi du prof</i> Rue des frères Hongolfier F-36000 Vannes SIGMAPHI		Name	M. Delbecq	Date	18/04/2013
tel:33 02 97 01 08 80 Fax:33 02 97 01 08 81 EMAIL:Contact@sigmaphi.fr		Checked			
		Approved			
		MATERIAL	See assembly		
		Trait.:			
		Roughness:			
		Tol Gen:			
		Supplier:			
		Weight:	4609.60 Kg		
			0.00		
		File name:	317111-JLA-701-001		
DWG NO:		317111-JLA-701-001		Rev:	
				F	
<small>This drawing may not be used without special license or authorisation express (Law of the 11 march 1957)</small>					



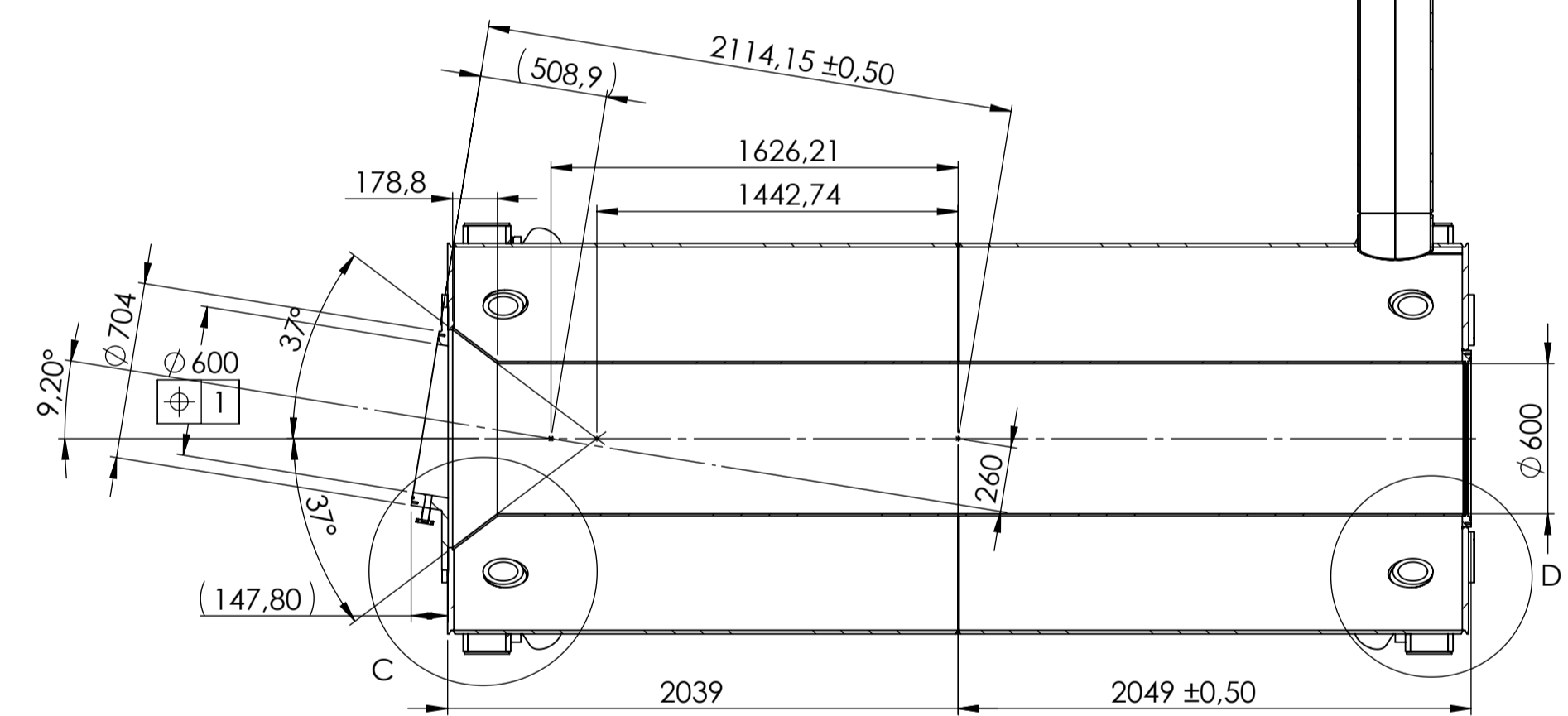
NOTE DE SOUDURE	Lg
701-001-S172	97.080000
701-001-S171	97.080000
701-001-S164	2728.000000
701-001-S163	2248.100000
701-001-S164	
701-001-S163	2248.100000
701-001-S162	2248.100000
701-001-S161	204.400000
701-001-S160	204.400000
701-001-S159	204.400000
701-001-S158	204.400000
701-001-S157	204.400000
701-001-S156	204.400000
701-001-S155	204.400000
701-001-S154	204.400000
701-001-S153	204.400000
701-001-S152	204.400000
701-001-S151	204.400000
701-001-S150	204.400000
701-001-S149	204.400000
701-001-S148	204.400000
701-001-S147	204.400000
701-001-S146	204.400000
701-001-S145	204.400000
701-001-S144	204.400000
701-001-S143	165.600000
701-001-S142	165.600000
701-001-S141	165.600000
701-001-S140	131.900000
701-001-S139	131.900000
701-001-S138	131.900000
701-001-S137	131.900000
701-001-S136	131.900000
701-001-S135	131.900000
701-001-S134	131.900000
701-001-S133	131.900000
701-001-S132	131.900000
701-001-S131	131.900000
701-001-S130	131.900000
701-001-S129	131.900000
701-001-S128	131.900000
701-001-S127	131.900000
701-001-S126	131.900000
701-001-S125	131.900000
701-001-S124	131.900000
701-001-S123	131.900000
701-001-S122	131.900000
701-001-S121	131.900000
701-001-S120	131.900000
701-001-S119	131.900000
701-001-S118	131.900000
701-001-S117	131.900000
701-001-S116	131.900000
701-001-S115	131.900000
701-001-S114	131.900000
701-001-S113	131.900000
701-001-S112	131.900000
701-001-S111	131.900000
701-001-S110	131.900000
701-001-S109	131.900000
701-001-S108	131.900000
701-001-S107	131.900000
701-001-S106	131.900000
701-001-S105	131.900000
701-001-S104	131.900000
701-001-S103	131.900000
701-001-S102	131.900000
701-001-S101	131.900000
701-001-S100	131.900000
701-001-S099	131.900000
701-001-S098	131.900000
701-001-S097	131.900000
701-001-S096	131.900000
701-001-S095	131.900000
701-001-S094	131.900000
701-001-S093	131.900000
701-001-S092	131.900000
701-001-S091	131.900000
701-001-S090	131.900000
701-001-S089	131.900000
701-001-S088	131.900000
701-001-S087	131.900000
701-001-S086	131.900000
701-001-S085	131.900000
701-001-S084	131.900000
701-001-S083	131.900000
701-001-S082	131.900000
701-001-S081	131.900000
701-001-S080	131.900000
701-001-S079	131.900000
701-001-S078	131.900000
701-001-S077	131.900000
701-001-S076	131.900000
701-001-S075	131.900000
701-001-S074	131.900000
701-001-S073	131.900000
701-001-S072	131.900000
701-001-S071	131.900000
701-001-S070	131.900000
701-001-S069	131.900000
701-001-S068	131.900000
701-001-S067	131.900000
701-001-S066	131.900000
701-001-S065	131.900000
701-001-S064	131.900000
701-001-S063	131.900000
701-001-S062	131.900000
701-001-S061	131.900000
701-001-S060	131.900000
701-001-S059	131.900000
701-001-S058	131.900000
701-001-S057	131.900000
701-001-S056	131.900000
701-001-S055	131.900000
701-001-S054	131.900000
701-001-S053	131.900000
701-001-S052	131.900000
701-001-S051	131.900000
701-001-S050	131.900000
701-001-S049	131.900000
701-001-S048	131.900000
701-001-S047	131.900000
701-001-S046	131.900000
701-001-S045	131.900000
701-001-S044	131.900000
701-001-S043	131.900000
701-001-S042	131.900000
701-001-S041	131.900000
701-001-S040	131.900000
701-001-S039	131.900000
701-001-S038	131.900000
701-001-S037	131.900000
701-001-S036	131.900000
701-001-S035	131.900000
701-001-S034	131.900000
701-001-S033	131.900000
701-001-S032	131.900000
701-001-S031	131.900000
701-001-S030	131.900000
701-001-S029	131.900000
701-001-S028	131.900000
701-001-S027	131.900000
701-001-S026	131.900000
701-001-S025	131.900000
701-001-S024	131.900000
701-001-S023	131.900000
701-001-S022	131.900000
701-001-S021	131.900000
701-001-S020	131.900000
701-001-S019	131.900000
701-001-S018	131.900000
701-001-S017	131.900000
701-001-S016	131.900000
701-001-S015	131.900000
701-001-S014	131.900000
701-001-S013	131.900000
701-001-S012	131.900000
701-001-S011	131.900000
701-001-S010	131.900000
701-001-S009	131.900000
701-001-S008	131.900000
701-001-S007	131.900000
701-001-S006	131.900000
701-001-S005	131.900000
701-001-S004	131.900000
701-001-S003	131.900000
701-001-S002	131.900000
701-001-S001	131.900000

<p>21 du profil Rue des Filles Hongollier F-36000 Vannes SIRMAPH</p> <p>tél:33 02 97 01 08 80 Fax:33 02 97 01 08 81 E-MAIL: Contact@sirmaph.fr</p>	Name		Date	
	Drawing	M. Delbecq	18/04/2013	
	Checked			
	Approved			
MATERIAL	See assembly			
Trait:				
Roughness:				
Tol Gen:				
Supplier:				
Weight:	4609.60 Kg			
	0.00			
File name:317111-JLA-701-001				
DWG NO.	317111-JLA-701-001			Rev:
				F
This drawing may not be used without special license or authorisation express (Law of the 11 march 1957)				

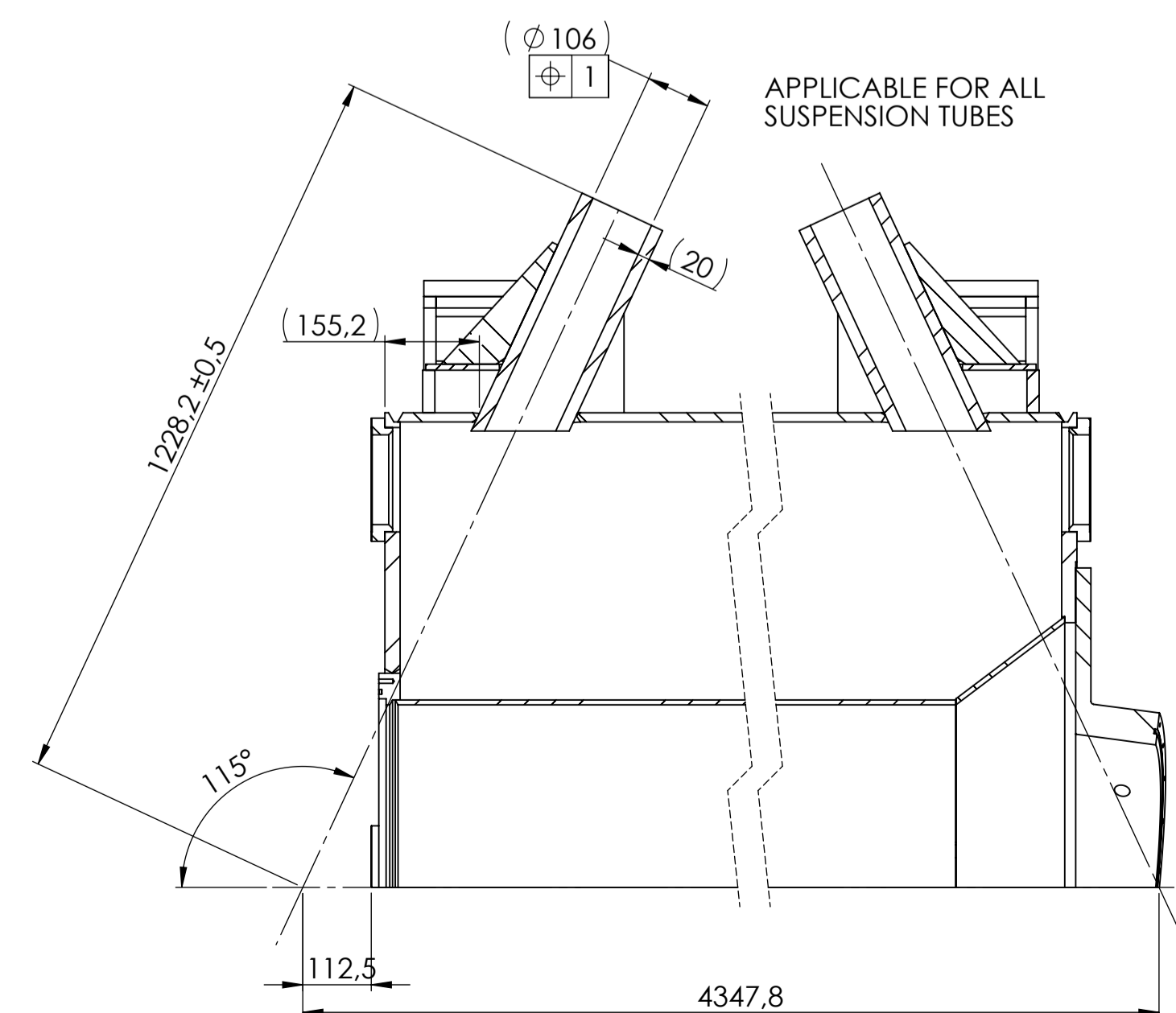


DÉTAIL C
ECHELLE 1 : 5

DÉTAIL D
ECHELLE 1 : 5



COUPE B-B



COUPE F-F (ROTATED)
ECHELLE 1 : 10

REVISIONS				
ZONE	REV.	DESCRIPTION	DATE	APPROUVE
-	F	CHANGE OF COMPONENTS AND ANGLE 22.5° BECAME 25°	12/03/13	-

<p>21 du port Rue des frères Hongollier F-36000 Vannes SIGMAPHI</p> <p>tel:33 02 97 01 08 80 Fax (33)02 97 01 08 81 EMAIL Contact@sigmaphi.fr</p>	Name		Date	
	Drawing	M. Delbecq		18/04/2013
	Checked			
	Approved			
MATERIAL	See assembly			
Trait.				
Roughness				
Tol Gen				
Supplier				
Weight	4609.60 Kg			
	0.00			
File name	317111-JLA-701-001			
DWG NO	317111-JLA-701-001			Rev: F
<small>This drawing may not be used without special license or authorisation express (Law of the 11 march 1957)</small>				