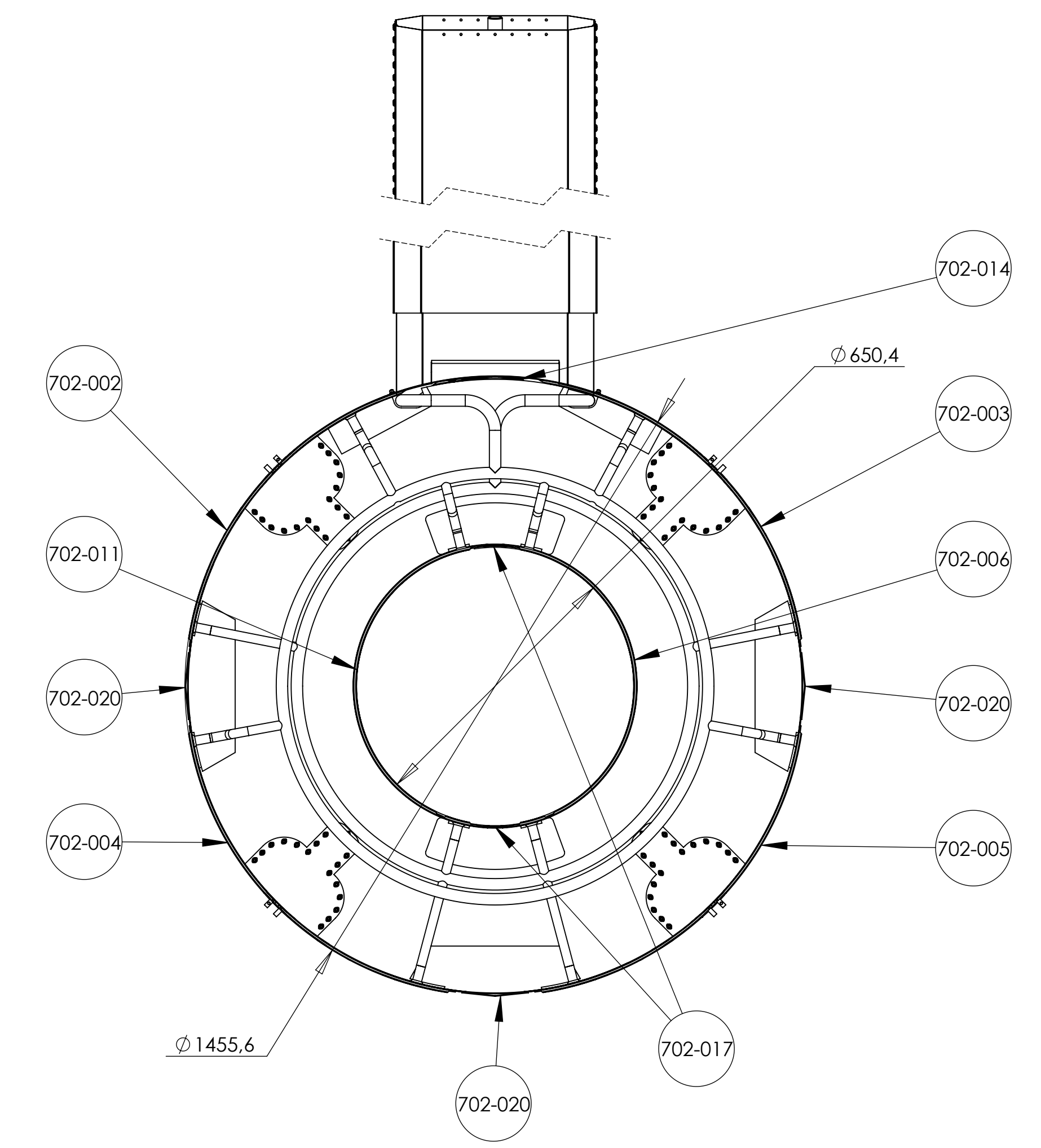


REP	REFERENCE	DESIGNATION	QTY	REV	MATERIAL	MASS (Kg)
702-002	317111-JLA-702-002	LEFT-TOP PANNEL	1	E	Inox/Stainless steel 304L	121.00
702-003	317111-JLA-702-003	RIGHT-TOP PANNEL	1	F	304L [X2CrNi18-9]	121.00
702-004	317111-JLA-702-004	LEFT-DOWN PANNEL	1	F	304L [X2CrNi18-9]	121.00
702-005	317111-JLA-702-005	RIGHT-DOWN PANNEL	1	F	304L [X2CrNi18-9]	226.75
702-007	317111-JLA-702-007	Flange 1	1	D	Inox/Stainless steel 304L	36.76
702-008	317111-JLA-702-008	Cone	1	D	Inox/Stainless steel 304L	9.78
702-009	317111-JLA-702-009	Flange 2	1	D	Inox/Stainless steel 304L	36.37
702-010	317111-JLA-702-010	Copper neck	1	E	Cuivre/Copper	4.10
702-011	317111-JLA-702-011	INNER LEFT PANNEL	1	D	Inox/Stainless steel 304L	58.00
702-006	317111-JLA-702-006	INNER RIGHT PANNEL	1	D	Inox/Stainless steel 304L	118.00
702-014	317111-JLA-702-014	bar connection 1	1	D	Inox/Stainless steel 304L	8.16
702-015	317111-JLA-702-015	Closing panel	8	D	Inox/Stainless steel 304L	0.55
702-016	317111-JLA-702-016	Closing welded panel 1	2	D	Inox/Stainless steel 304L	0.21
702-017	317111-JLA-702-017	bar connection 2	2	D	Inox/Stainless steel 304L	2.98
702-018	317111-JLA-702-018	Closing welded panel 2	2	D	Inox/Stainless steel 304L	0.10
702-019	317111-JLA-702-019	Closing welded panel 3	3	D	Inox/Stainless steel 304L	0.26
702-020	317111-JLA-702-020	bar connection 3	3	D	Inox/Stainless steel 304L	8.86
702-027	317111-JLA-702-027	Manchon	1	D	Cuivre/Copper	8.86
702-028	317111-JLA-702-028	Pipe #28	1	C	Inox/Stainless steel 304L	4.45
702-029	317111-JLA-702-029	Pipe #29	1	C	Inox/Stainless steel 304L	3.44
702-030	317111-JLA-702-030	Na Return pipe support	9	C	Cuivre/Copper	0.26
702-031	317111-JLA-702-031	Na return pipe support closing	9	C	Cuivre/Copper	0.09
702-032	317111-JLA-702-032	Nitrogen supply pipe support	5	D	FR4	0.03
702-034	317111-JLA-702-034	Bellow for Na pipes	2	C		0.11
702-035	317111-JLA-702-035	Copper neck part #35	2	C	Cuivre/Copper	0.23
702-037	317111-JLA-702-037	Copper neck part #37	1	C	Cuivre/Copper	9.73
702-038	317111-JLA-702-038	Copper neck part #38	2	C	Cuivre/Copper	1.04
702-040	317111-JLA-702-040	Copper neck part #40	1	C	Cuivre/Copper	9.83
702-042	317111-JLA-702-042	Copper neck part #42	1	C	Cuivre/Copper	9.66
702-043	317111-JLA-702-043	Copper neck part #43	1	C	Cuivre/Copper	9.75
9034	VIS 304L CHc M 6 X 10	NVIR000	15		STAINLESS STEEL	5.41
9035	Rondelle Inox/Washer Stainless Steel	Rondelle Inox/Washer Stainless Steel	25		Inox/Stainless steel 304L	1.10
9036	Thread rod M5 x Lg15	Stainless Steel Threaded Rod	184		Inox/Stainless steel 304L	0.00
9039	Reduction-ANSI-0.75inch-thickness2mm	Réduction ANSI 1"-3/4" ep2	1		304L [X2CrNi18-9]	0.07
702-012	317111-JLA-702-012	output circuit	1	D	Inox/Stainless steel 304L	5.57
702-013	317111-JLA-702-013	input circuit	1	D	Inox/Stainless steel 304L	5.43
9053	PVD013006030XD	Spring washer	10		Cuivre/Copper	0.00
9054	VIS 304L CHc M 6 X 12	NVIR000	10		STAINLESS STEEL	5.86
9055	Rondelle Ø 4 M inox304L	NVIR0011	712			
9056	rivet iso 16585 4 x 8 0		356		Cuivre/Copper	1.34
9057	PVD080804030XD	Spring washer	356		Cuivre/Copper	0.00
9058	Ecrou H M 5 inox 304L	Ecrou Inox / Nut Stainless Steel	184		Inox/Stainless steel 304L	0.00
9059	PVD010005040XD	Spring washer	184		Cuivre/Copper	0.00
9060	Rondelle Ø 5 M inox304L	Rondelle Inox/Washer Stainless Steel	184		Inox/Stainless steel 304L	0.68



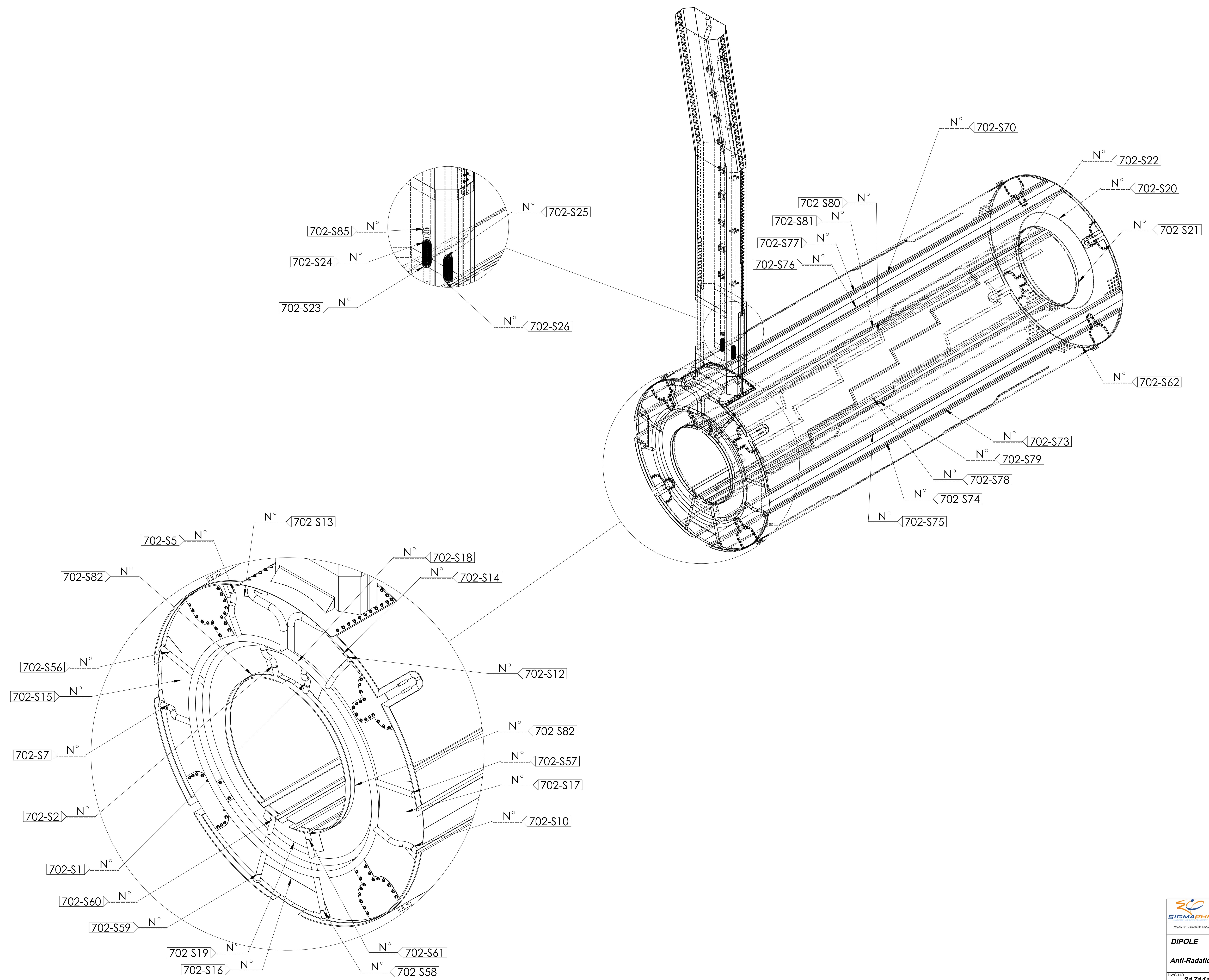
NOTE:
 - Content liquid nitrogen at 70°K.
 - Design pressure: 6atm absolute from 60°K to 300°K.
 - Design and manufacturing according to AMSE BPV.
 - thermal junction between non-welded parts shall be made with indium joint

REP 702-030 shall be brazed on 702-038 702-040
 threaded rods 9036 shall be brazed on the panels

REVISIONS				
ZONE	REV.	DESCRIPTION	DATE	APPROUVE
	E	change of components	12/11/2012	

 21 rue de la F-56000 Vannes	Checked M. Delbecq	Date 18/04/2013
	Approved Material <non spécifiés>	
DIPOLE Anti-Radiation screen		
Weight 984.53 Kg		
DWG No: 317111-JLA-702-001 The drawing may not be used without express approval of authorisation express Date of the 11 March 1995		

NOTE DE SOUDURE	LONGUEUR DE SOUDURE
702-S1	66,91
702-S2	66,91
702-S3	66,91
702-S4	66,91
702-S5	66,91
702-S6	66,91
702-S7	66,91
702-S8	66,91
702-S9	66,91
702-S10	66,91
702-S11	66,91
702-S12	66,91
702-S13	66,91
702-S14	66,91
702-S15	66,91
702-S16	66,91
702-S17	66,91
702-S18	66,91
702-S19	66,91
702-S20	66,91
702-S21	66,91
702-S22	66,91
702-S23	66,91
702-S24	66,91
702-S25	66,91
702-S26	66,91
702-S27	66,91
702-S28	66,91
702-S29	66,91
702-S30	66,91
702-S31	66,91
702-S32	66,91
702-S33	66,91
702-S34	66,91
702-S35	66,91
702-S36	66,91
702-S37	66,91
702-S38	66,91
702-S39	66,91
702-S40	66,91
702-S41	66,91
702-S42	66,91
702-S43	66,91
702-S44	66,91
702-S45	66,91
702-S46	66,91
702-S47	66,91
702-S48	66,91
702-S49	66,91
702-S50	66,91
702-S51	66,91
702-S52	66,91
702-S53	66,91
702-S54	66,91
702-S55	66,91
702-S56	66,91
702-S57	66,91
702-S58	66,91
702-S59	66,91
702-S60	66,91
702-S61	66,91
702-S62	66,91
702-S63	66,91
702-S64	66,91
702-S65	66,91
702-S66	66,91
702-S67	66,91
702-S68	66,91
702-S69	66,91
702-S70	66,91
702-S71	66,91
702-S72	66,91
702-S73	66,91
702-S74	66,91
702-S75	66,91
702-S76	66,91
702-S77	66,91
702-S78	66,91
702-S79	66,91
702-S80	66,91
702-S81	66,91
702-S82	66,91
702-S83	66,91
702-S84	66,91
702-S85	66,91



		11, rue de la Vallée de la F-56000 Vannes	18/04/2013 M. Delbecq M. Delbecq
DIPOLE Anti-Radiation screen		Matériau: Matériau non spécifié Poids: 984,53 Kg	317111-JLA-702-001 E