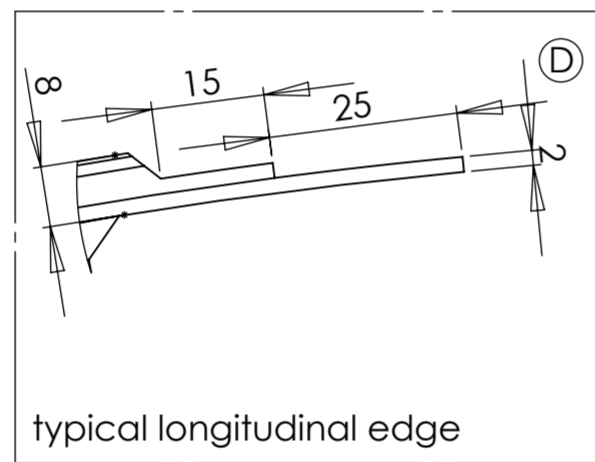
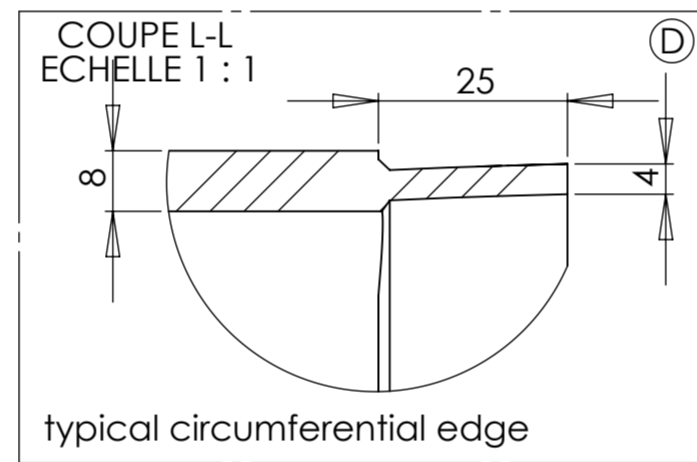


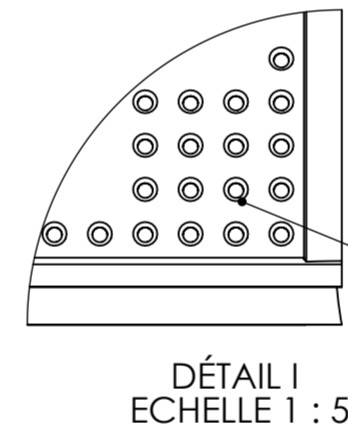
DETAIL OF A CONNECTION



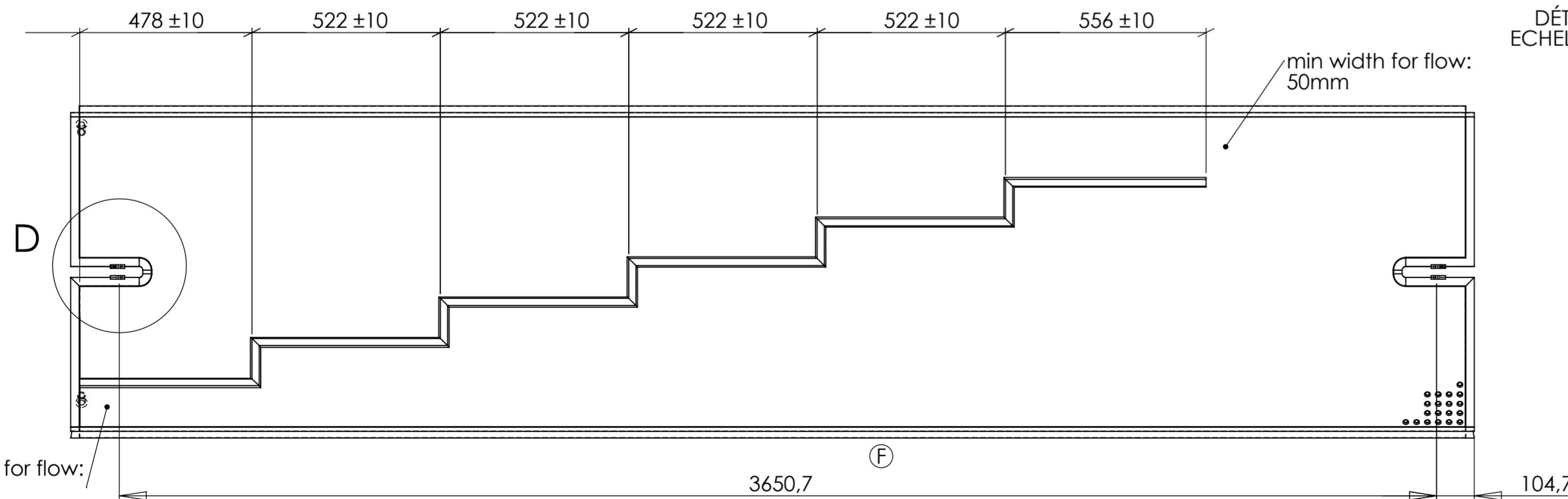
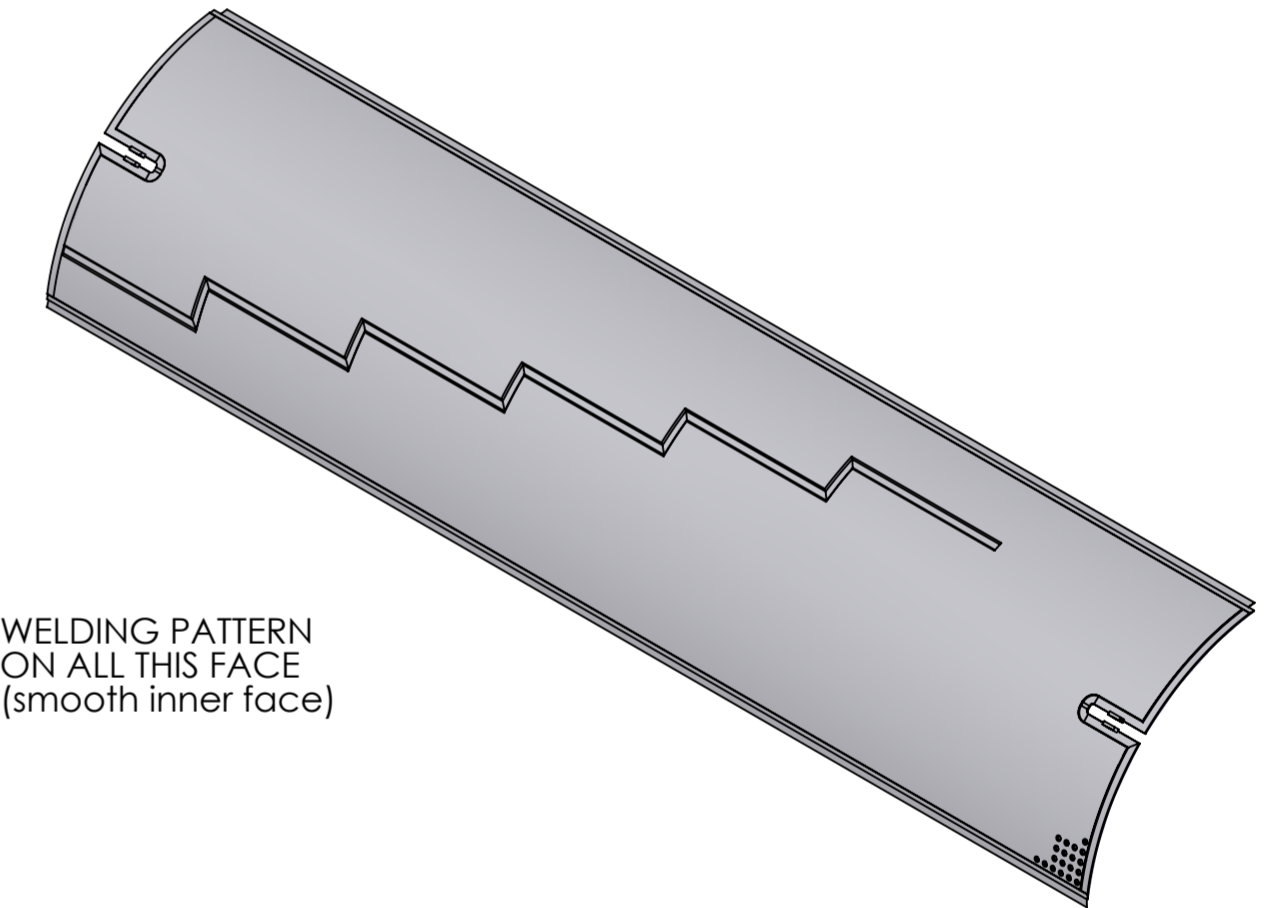
typical longitudinal edge



typical circumferential edge



WELDING PATTERN ON ALL THIS FACE (smooth inner face)



VUE A ECHELLE 2 : 25

**NOTE:**  
 - All dimensions in mm.  
 - Continuous weld along the edges and serpentine pattern.  
 - Content liquid nitrogen at 70°K.  
 - Design pressure: 6atm absolute from 60°K to 300°K.  
 - Design and manufacturing according to AMSE BPV.  
 - Final manufacturing drawings & control plan to be provided by the supplier and approved by SIGMAPHI.

REVISIONS				
ZONE	REV.	DESCRIPTION	DATE	APPROUVE
	D	changed edge design	05/07/2012	
	E	oblong hole 5=>7	29/11/2012	
	F	changed dimension between holes	14/03/2013	

 <b>SIGMAPHI</b> 21 du pral Rue des frères Mongollier F-56000 Vannes	Name	M. Delbecq	Date	16/04/2013
	Drawing			
	Checked			
	Approved			
	Trait.			
	MATERIAL:	304L (X2CrNi18-9)		
<b>ANTI-RADIATION SCREEN</b>				
	Roughness:			
	Tol Gen	+/-3		
	Supplier:			
	Weight:	226.75 Kg		
File name:317111-JLA-702-005				
DWG NO.		<b>317111-JLA-702-005</b>		Rev:
				<b>F</b>
This drawing may not be used without special licence or authorisation express (Law of the 11 march 1957)				