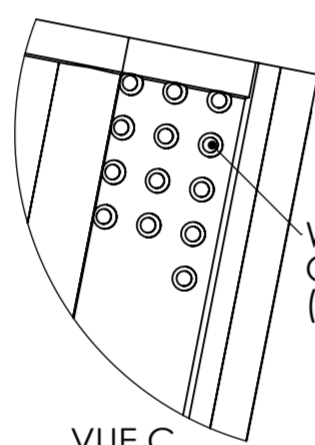
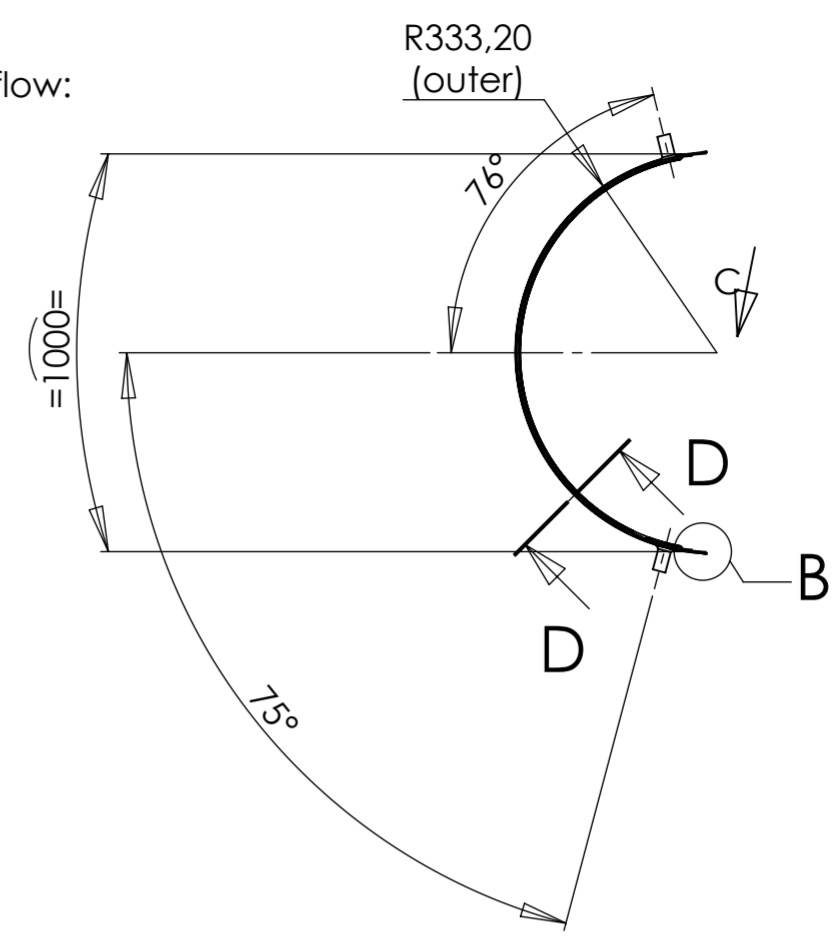


min width for flow:
50mm

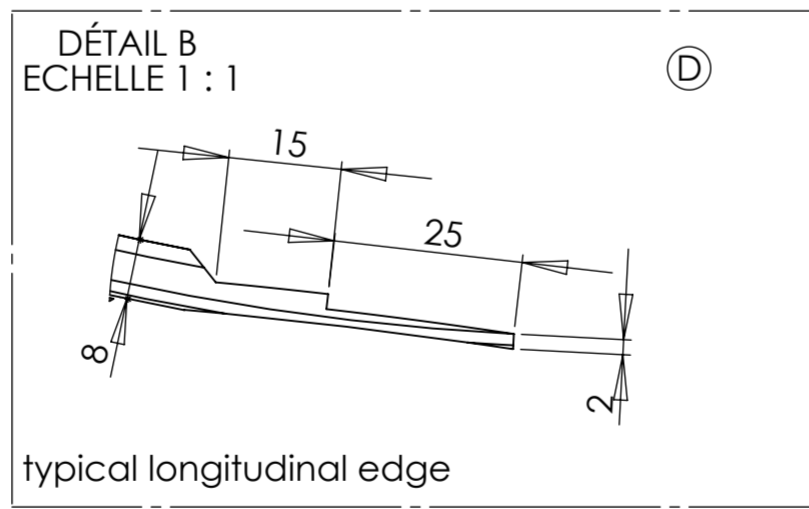
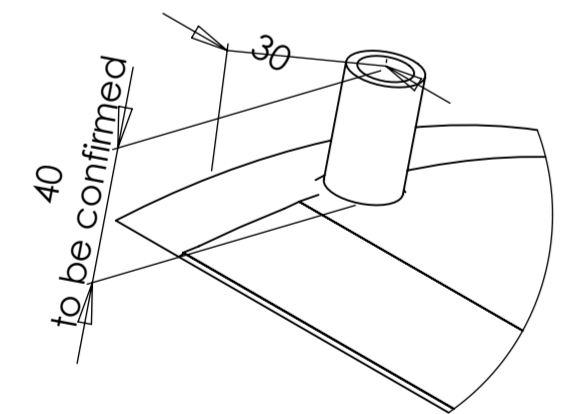
min width for flow:
50mm



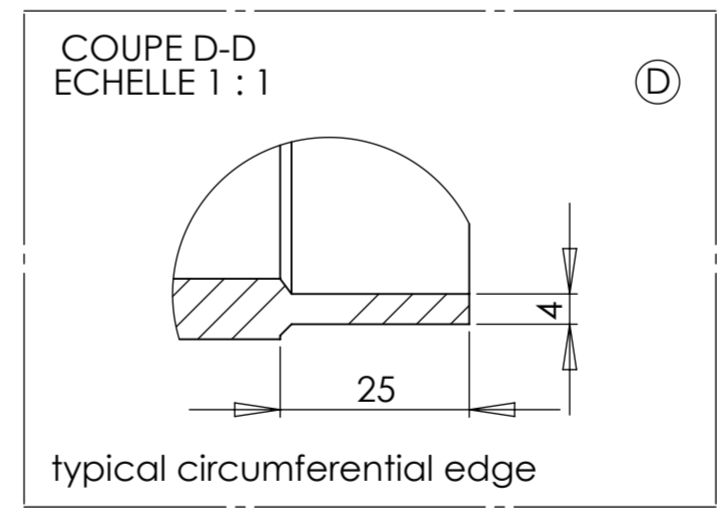
WELDING PATTERN
ON ALL THIS FACE
(smooth outer face)

VUE C
ECHELLE 1 : 5

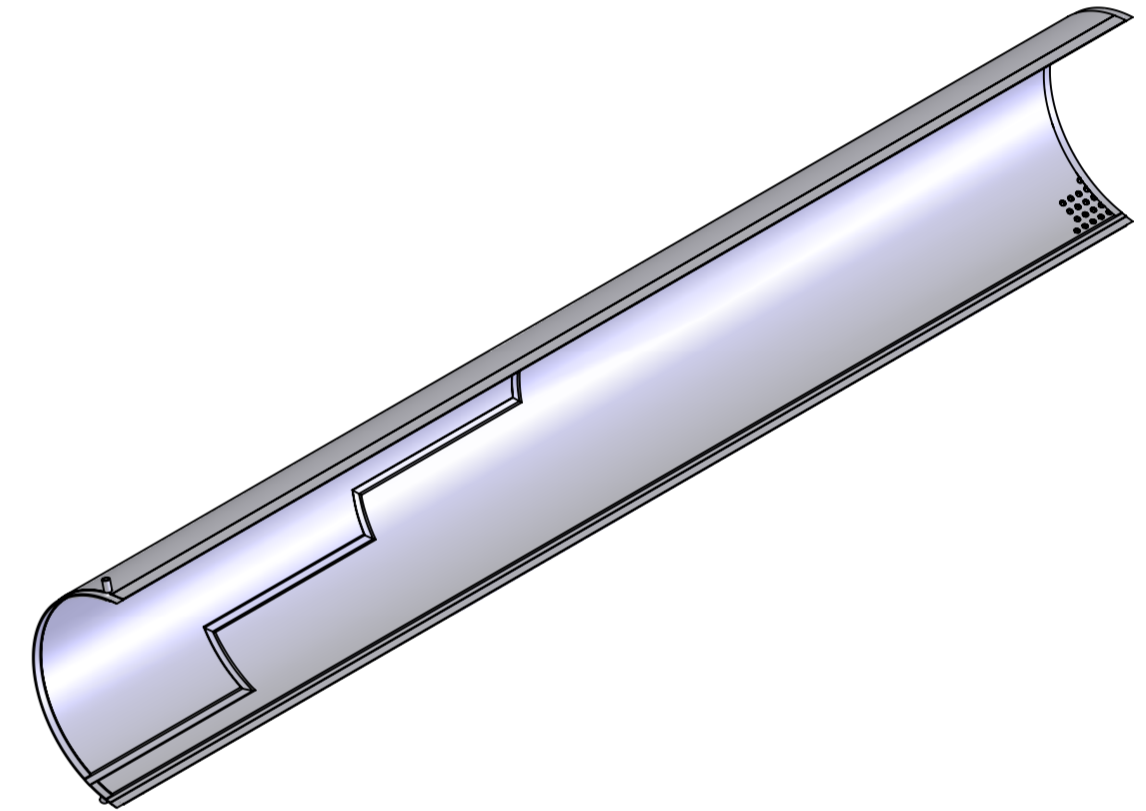
DETAIL OF A CONNECTION



typical longitudinal edge



typical circumferential edge



NOTE:
 - All dimensions in mm.
 - Continuous weld along the edges and serpentine pattern.
 - Content liquid nitrogen at 70°K.
 - Design pressure: 6atm absolute from 60°K to 300°K.
 - Design and manufacturing according to AMSE BPV.
 - Final manufacturing drawings & control plan to be provided by the supplier and approved by SIGMAPHI.

REVISIONS				
ZONE	REV.	DESCRIPTION	DATE	APPROUVE
	D	changed edges design	05/07/2012	

 SIGMAPHI <i>zi du pyral</i> Rue des frères Mongollier F-56000 Vannes Tel(33) 02.97.01.08.80 Fax (33)02.97.01.08.81 EMAIL Contact@sigmaphi.fr	SIGMAPHI Name: M. Delbecq Date: 16/04/2013	
	Drawing: M. Delbecq Checked: Approved:	MATERIAL: 304L (X2CrNi18-9) Trait.: Roughness: Tol Gen: +/-3 Supplier: Weight: 58.00 Kg ERREUR: SW_Mas/Vo File name: 317111-JLA-702-011
	ANTI-RADIATION SCREEN INNER LEFT PANNEL	
	DWG NO. 317111-JLA-702-011 Rev: D	

This drawing may not be used without special licence or authorisation express (Law of the 11 march 1957)