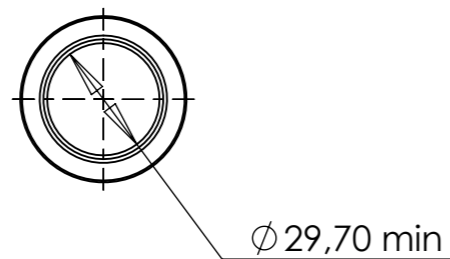
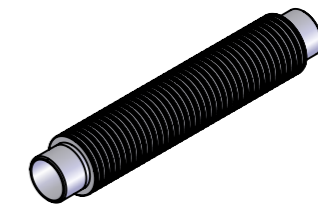
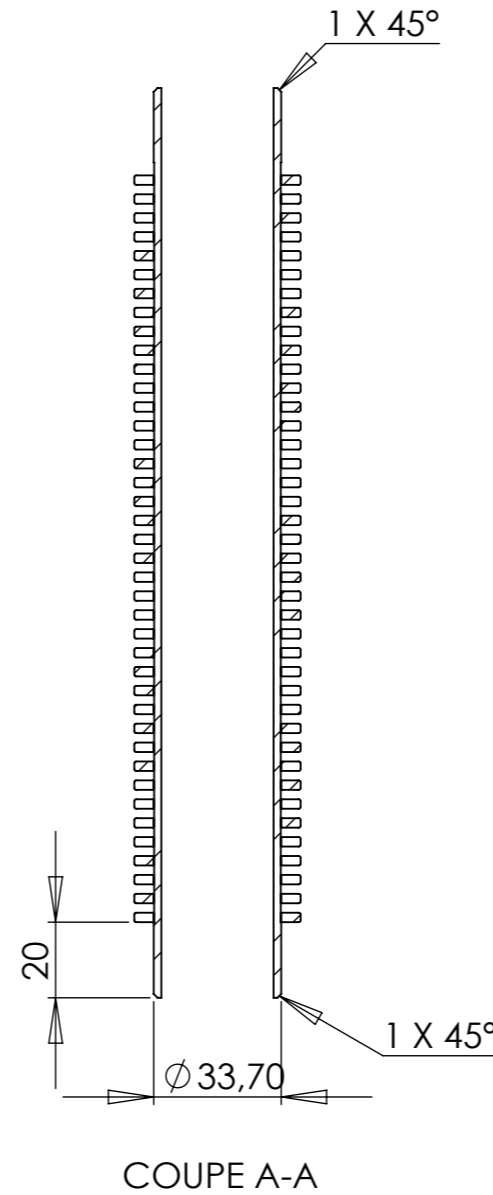
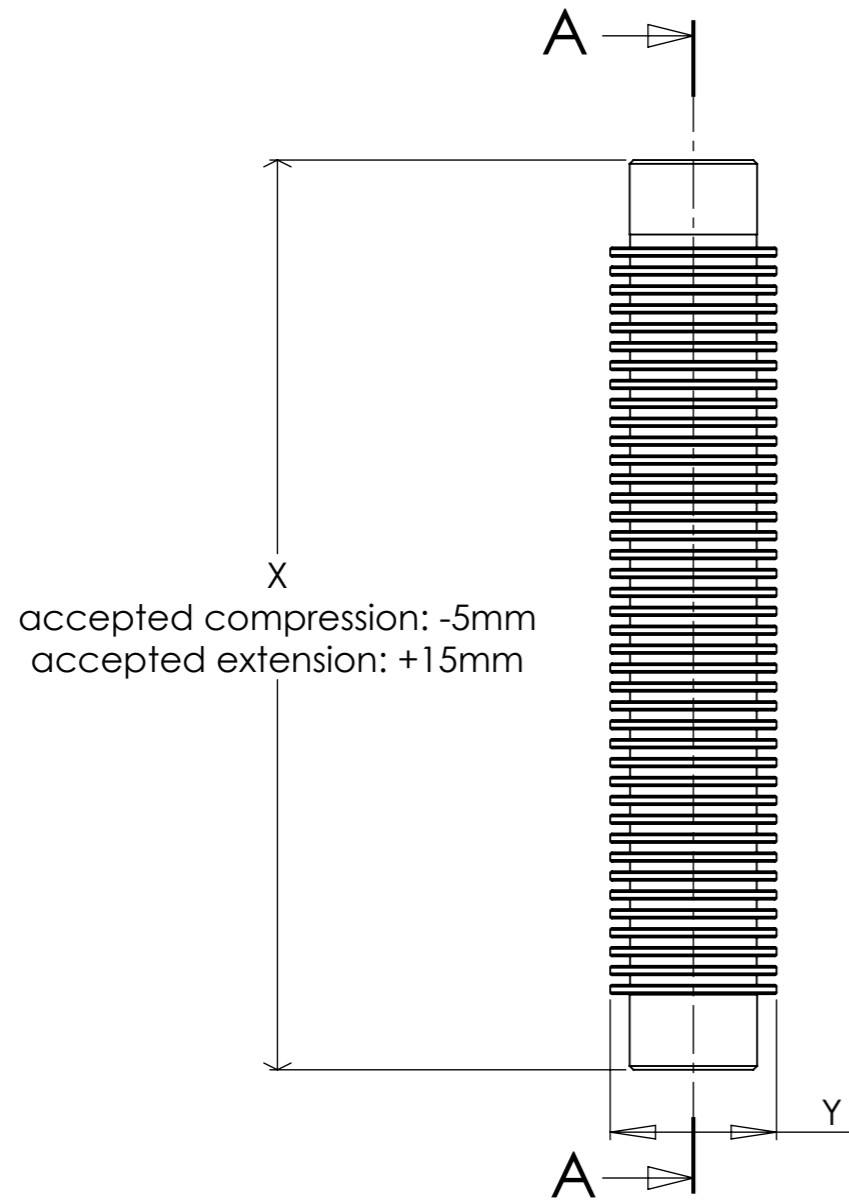


NOTE:

- All dimensions in mm.
- Material: 304L or 316L
- Content liquid helium at 4K.
- Design pressure: 7atm absolute from 4K to 300K (inner pressure).
- Design and manufacturing according to AMSE BPV.
- Helium leakage test: 10^{-9} mbar.l/s
- Relaxed "X" value shall not be more than 340mm
- "Y" value shall not be more than 65mm
- Final manufacturing drawings & control plan to be provided by the supplier and approved by SIGMAPHI.



 <p>ZI du prat Rue des freres Mongolfier F-56000 Vannes</p> <p>Tel(33) 02.97.01.08.80 Fax (33)02.97.01.08.81 EMAIL Contact@sigmaphi.fr</p>	Name	Date
	Drawing	M. Delbecq
	Checked	
	Approved	
	MATERIAL:	304L (X2CrNi18-9)
	Trait.:	
He VESSEL	Roughness :	
	Tol Gen	± 1
	Supplier:	
BELLOW FOR HE SUPPLYING	Weight:	0.85 Kg
		ERREUR!SW_Mas/Vo
	File name:	317111-JLA-703-021
DWG NO.	317111-JLA-703-021	
	Rev:	D
<p>This drawing may not be used without special licence or authorisation express (Law of the 11 march 1957)</p>		
		<p>A3 SCALE:1:2 SHEET 1 OF 1</p>