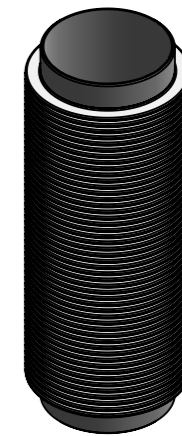
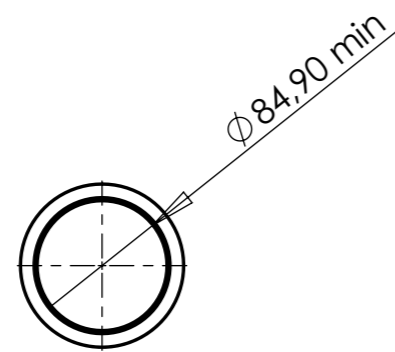


COUPE A-A



**NOTE:**

- All dimensions in mm.
- Material: 304L or 316L
- Content liquid helium at 4K.
- Design pressure: 7atm absolute from 4K to 300K (inner pressure).
- Design and manufacturing according to AMSE BPV.
- Helium leakage test:  $10^{-9}$  mbar.l/s
- Relaxed "X" value shall not be more than 380mm
- "Y" value shall not be more than 117mm
- Final manufacturing drawings & control plan to be provided by the supplier and approved by SIGMAPHI.

 ZI du prat Rue des frères Mongolfier F-56000 Vannes Tel(33) 02.97.01.08.80 Fax (33)02.97.01.08.81 EMAIL Contact@sigmaphi.fr	Name	Date
	Drawing	M. Delbecq
	Checked	
	Approved	
	MATERIAL:	304L (X2CrNi18-9)
	Trait.:	
	Roughness :	
	Tol Gen	±1
	Supplier:	
	Weight:	4.16 Kg
		ERREUR!SW_Mas/Vo
		File name:317111-JLA-703-025
DWG NO.	Rev:	
<b>317111-JLA-701-025</b>	<b>D</b>	
This drawing may not be used without special licence or authorisation express (Law of the 11 march 1957)		
	A3	SCALE:1:5 SHEET 1 OF 1