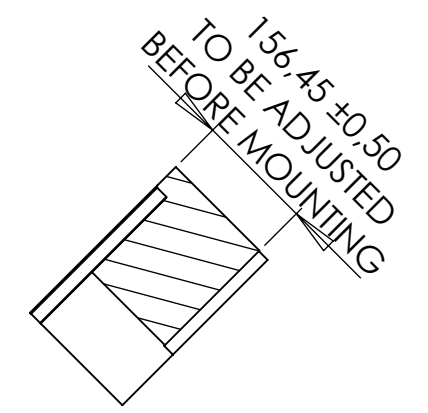
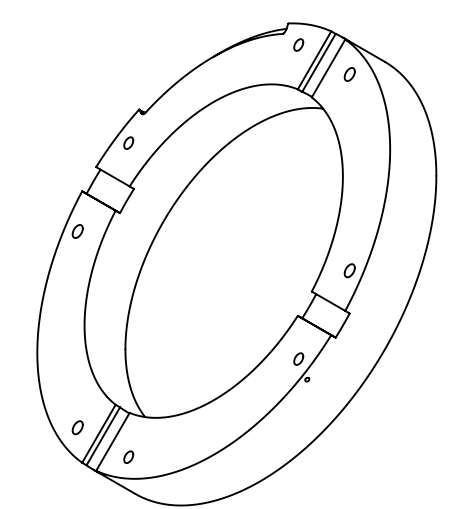
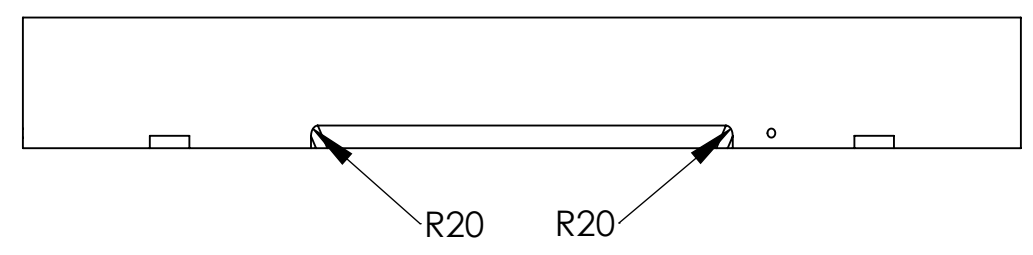
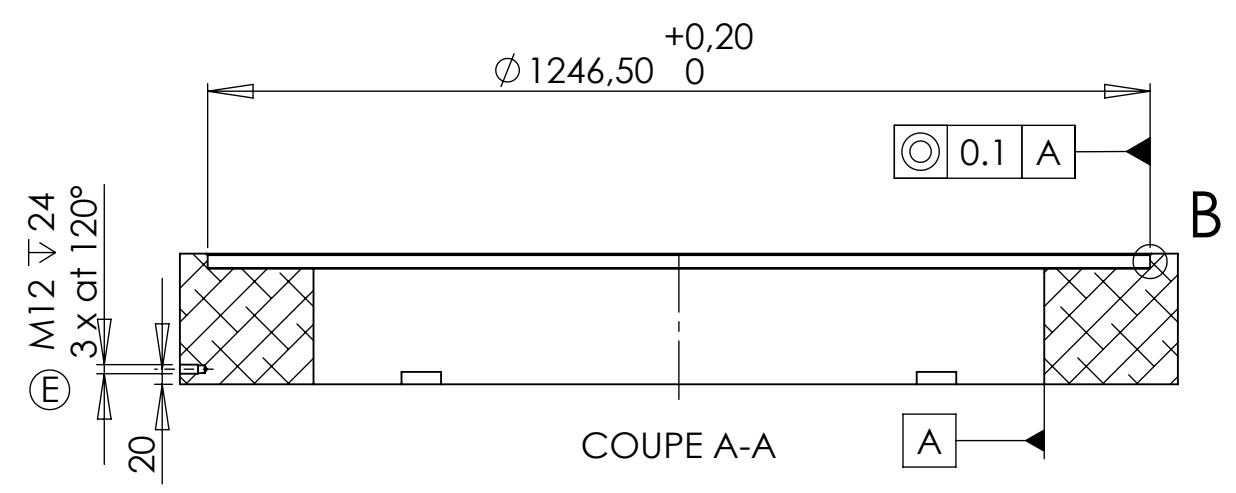


DÉTAIL B
ECHELLE 1 : 2



COUPE D-D



NOTE:
Anodization thickness $\geq 40 \mu\text{m}$
Insulation voltage : $\geq 1000 \text{ V dc}$

REVISIONS				
ZONE	REV.	DESCRIPTION	DATE	APPROUVE
	A1	CHANGES FOR INTERMEDIARY DESIGN REVIEW	18/10/2011	
	A2	changed holes for helium pipes	08/12/11	
	D	changed position of holes for threaded rods + added top chamfer	09/07/2012	
	E	added holes for handling	05/11/2012	

<p>SIGMAPHI zi du prat Rue des frères Mongollier F-56000 Vannes</p> <p>Tel:(33) 02.97.01.08.80 Fax (33)02.97.01.08.81 EMAIL Contact@sigmaphi.fr</p>	Name	M. Delbecq	Date	16/04/2013
	Drawing			
	Checked			
	Approved			
	MATERIAL:	ALU 5083		
	Trait.:	SEE NOTE		
COLD MASS		Roughness :		
	Tol Gen	+/-1		
	Supplier:			
END FORCE RING 1		Weight:	263.57 Kg	
			0.00	
File name:317111-JLA-704-002				
DWG NO.		317111-JLA-704-002		Rev.
				E
This drawing may not be used without special licence or authorisation express (Law of the 11 march 1957)				
			A2	SCALE:1:10 SHEET 1 OF 1