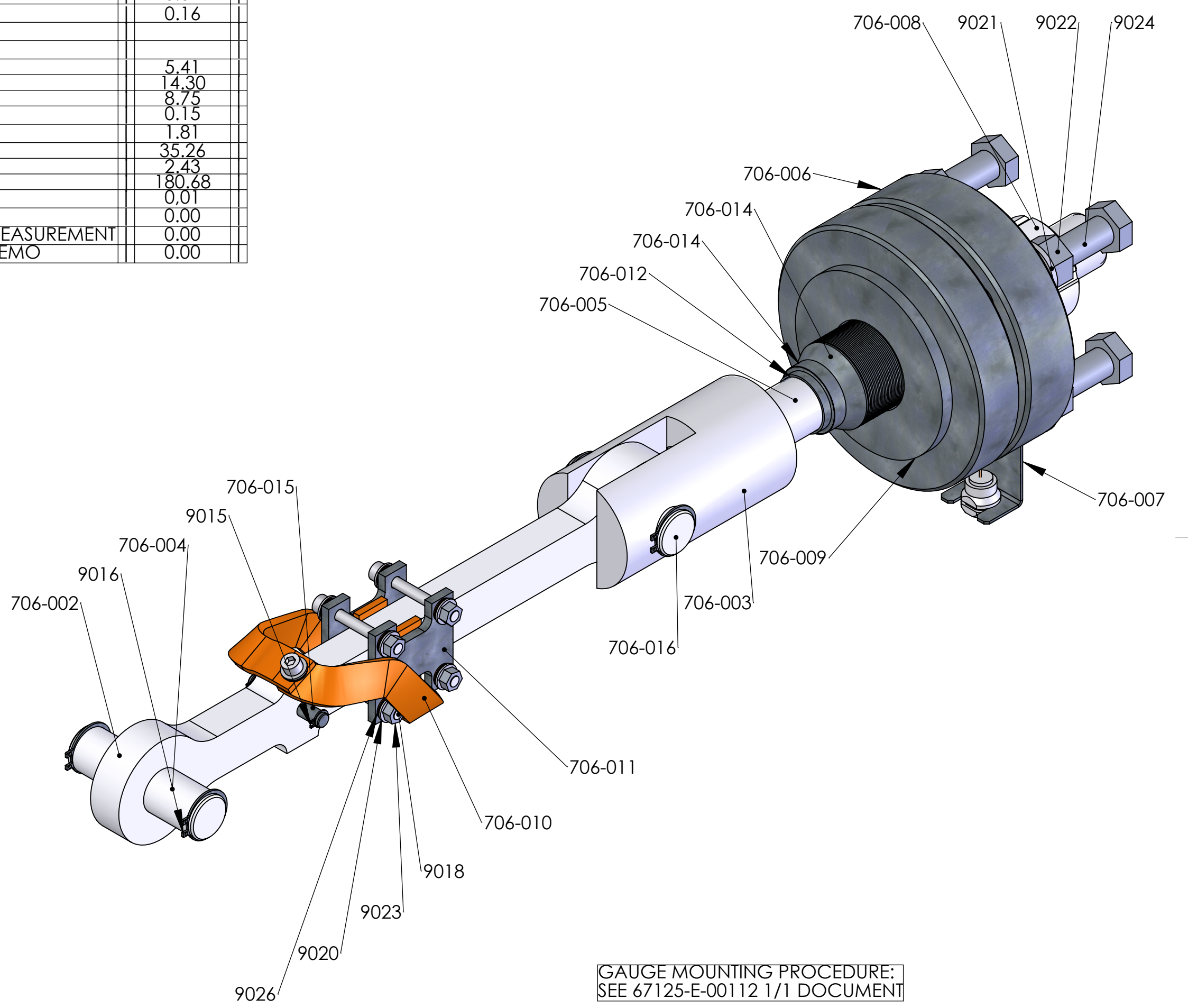
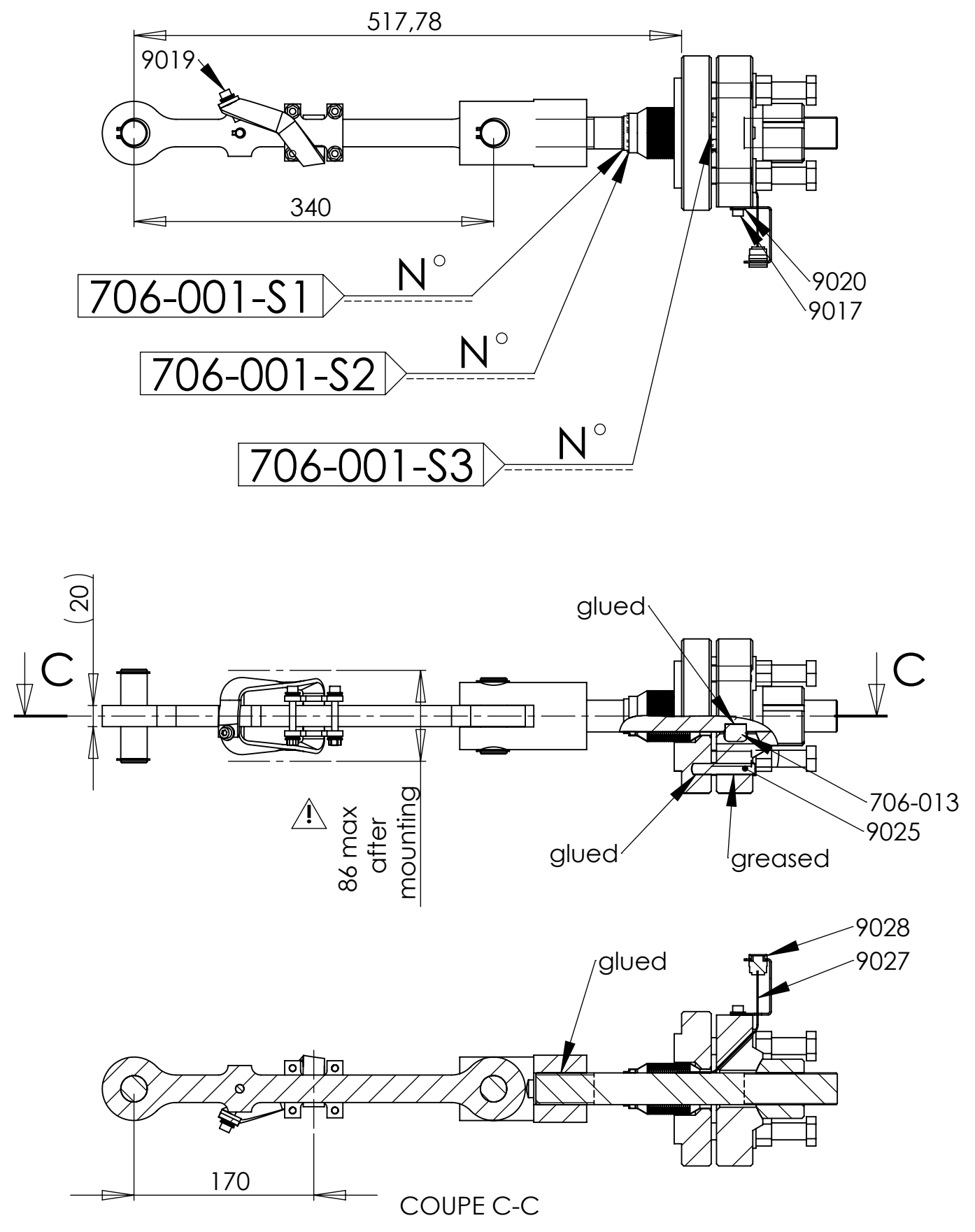
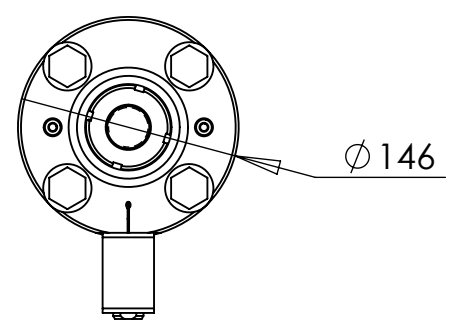


1	2	3	4	5	6	7	8	9	10	11	12	
REP	REFERENCE	DESIGNATION	QTY	REV	MATERIAL	SUPPLIER	MASS (Kg)	REVISIONS				
706-002	317111-JLA-706-002	Link	1	D	Ti-6Al-4V		1.11	ZONE	REV.	DESCRIPTION	DATE	APPROUVE
706-003	317111-JLA-706-003	Clevis	1	D	Nitronic 50		1.87		E	CHANGE OF COMPONENTS	12/03/2013	
706-004	317111-JLA-706-004	PIN	1	D	Ti-6Al-4V		0.19					
706-005	317111-JLA-706-005	axle	1	C	Nitronic 50		1.60					
706-006	317111-JLA-706-006	flange adjustment	1	C	Inox/Stainless steel 304L		3.81					
706-007	317111-JLA-706-007	lug	1	C	Inox/Stainless steel 304L		0.04					
706-008	317111-JLA-706-008	special spherical nut	1	C	Ti-6Al-4V		0.32					
706-009	317111-JLA-706-009	suspension end	1	C	Inox/Stainless steel 304L		3.39					
706-010	317111-JLA-706-010	Braids	1	C	Cuivre/Copper		0.23					
706-011	317111-JLA-706-011	braid clamp	2	B1	Inox/Stainless steel 304L		0.08					
706-012	317111-JLA-706-012	Bellow attachment point	1	B1	Inox/Stainless steel 304L		0.02					
706-013	317111-JLA-706-013	Key	1	C	Nitronic 50		0.03					
706-014	317111-JLA-706-014	Suspension bellow	1	B1	Inox/Stainless steel 304L		0.09					
706-015	317111-JLA-706-015	pin / radiation screen	1	A	Inox/Stainless steel 304L		0.02					
706-016	317111-JLA-706-016	PIN	1	A	Ti-6Al-4V		0.16					
9015	Circlips pour arbre 8X0.8		2									
9016	Circlips pour arbre 25X1.2		4									
9017	VIS 304L CHc M 6 X 10	NVI9000	2		STAINLESS STEEL		5.41					
9018	VIS 304L CHc M 6 X 50	NVI9000	4		STAINLESS STEEL		14.30					
9019	VIS 304L CHc M 6 X 25	NVI9000	1		STAINLESS STEEL		8.75					
9020	Rondelle Ø 6 M inox304L	NVIRP0018	11		Matériau <non spécifié>		0.15					
9021	Rondelle Ø 16 M inox304L	NVIRP0028	4		Matériau <non spécifié>		1.81					
9022	Ecrou H M 16 Inox 304L	NVIEC0022	4		Inox/Stainless steel 304L		35.26					
9023	Ecrou H M 6 Inox 304L	NVIEC0009	4		Inox/Stainless steel 304L		2.43					
9024	Vis 304L HM 16 X 90	NVI9000	4		Inox/Stainless steel 304L		180.68					
9025	12x60	Tapped pin/goupille taraudé	2		steel/Acier		0.01					
9026	PVD013006070XD	Spring washer	18		Cuivre/Copper		0.00					
9027	SENSOR CEA-06-125UT-350	CEA-06-125UT-350	1		copper OFHC	MICRO MEASUREMENT	0.00					
9028	LEMO 8 PIN CONNECTOR	EEN.2F.308.XLM	1		Matériau <non spécifié>	LEMO	0.00					

REVISIONS				
ZONE	REV.	DESCRIPTION	DATE	APPROUVE
	E	CHANGE OF COMPONENTS	12/03/2013	



GAUGE MOUNTING PROCEDURE:
SEE 67125-E-00112 1/1 DOCUMENT

SIGMAPHI <i>zi du pval</i> Rue des frères Mongollier F-56000 Vannes			Name	M. Delbecq	Date	16/04/2013
Tel(33) 02.97.01.08.80 Fax (33)02.97.01.08.81 EMAIL Contact@sigmaphi.fr			Drawing			
			Checked			
			Approved			
			Trait.:			
317111-JLA-001-001			MATERIAL:	See assembly		
			Roughness:			
			Toi Gen			
			Supplier:			
			Weight:	14.09 Kg		
				0.00		
			File name:317111-JLA-706-001			
DWG NO. 317111-JLA-706-001			Rev:	E		
This drawing may not be used without special licence or authorisation express (Law of the 11 march 1957)			A2		SCALE:1:5 SHEET 1 OF 1	