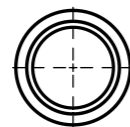


**NOTE:**

- All dimensions in mm.
- Material: 304L or 316L
- Content liquid helium at 4K.
- Design pressure: 7atm absolute from 4K to 300K (inner pressure).
- Design and manufacturing according to AMSE BPV.
- Helium leakage test:  $10^{-9}$  mbar.l/s
- Relaxed "X" value shall not be more than 380mm
- "Y" value shall not be more than 117mm
- Final manufacturing drawings & control plan to be provided by the supplier and approved by SIGMAPHI.



FOR INFORMATION

*Porniel*

 ZI du prat Rue des frères Mongolfier F-56000 Vannes Tel(33) 02.97.01.08.80 Fax (33)02.97.01.08.81 EMAIL Contact@sigmaphi.fr	Name	Date
	Drawing <b>M. Delbecq</b>	10/10/2013
	Checked	
	Approved	
	MATERIAL: <b>304L (X2CrNi18-9)</b>	
	Trait.:	
	Roughness :	
	Tol Gen <b>±1</b>	
	Supplier:	
	Weight: <b>1.84 Kg</b>	
	<b>0.00</b>	
	File name:317111-JLA-703-025	
DWG NO. <b>317111-JLA-703-025</b>	Rev:	<b>E</b>
This drawing may not be used without special licence or authorisation express (Law of the 11 march 1957)		 A3 SCALE:1:5 SHEET 1 OF 1