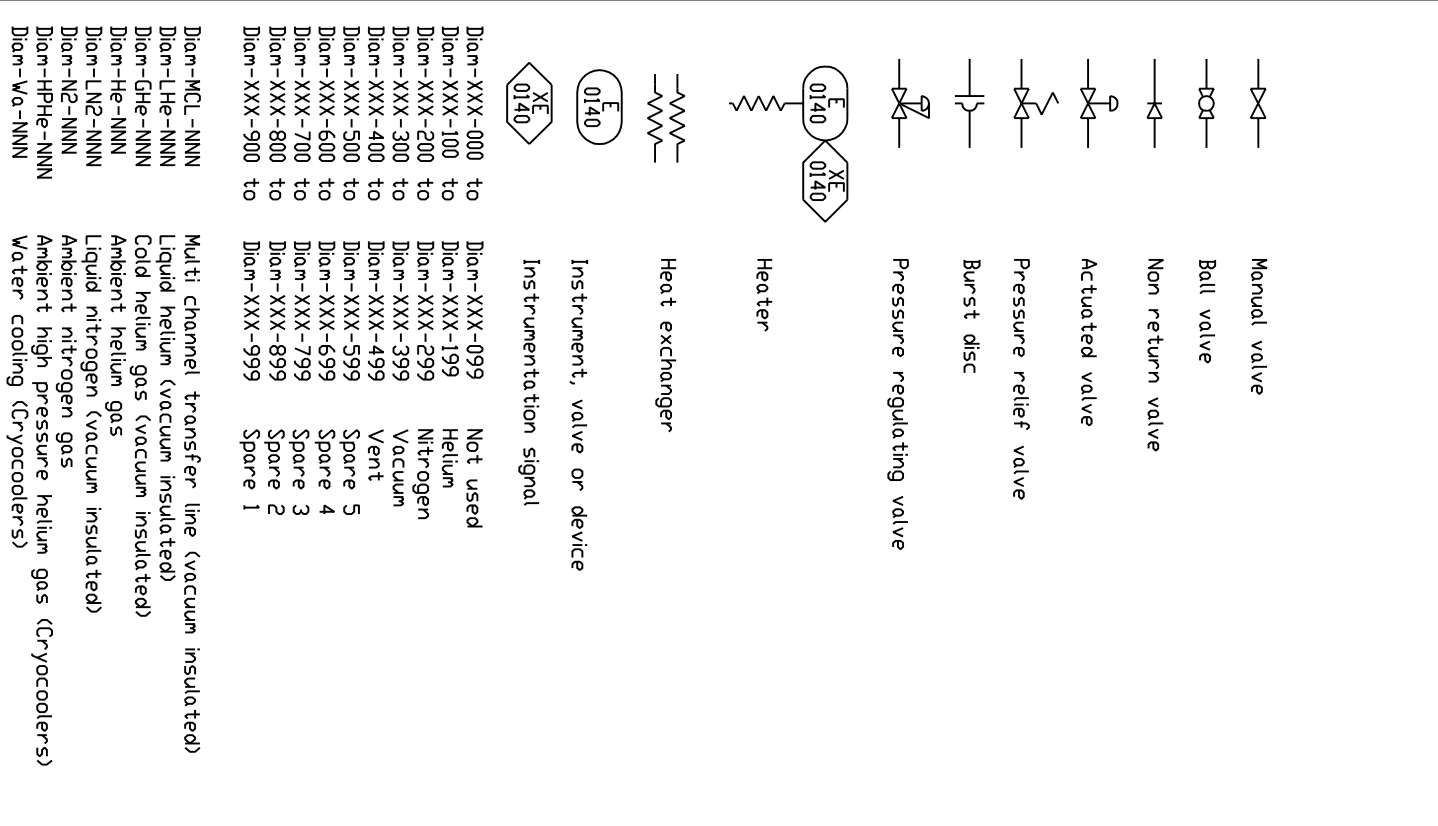
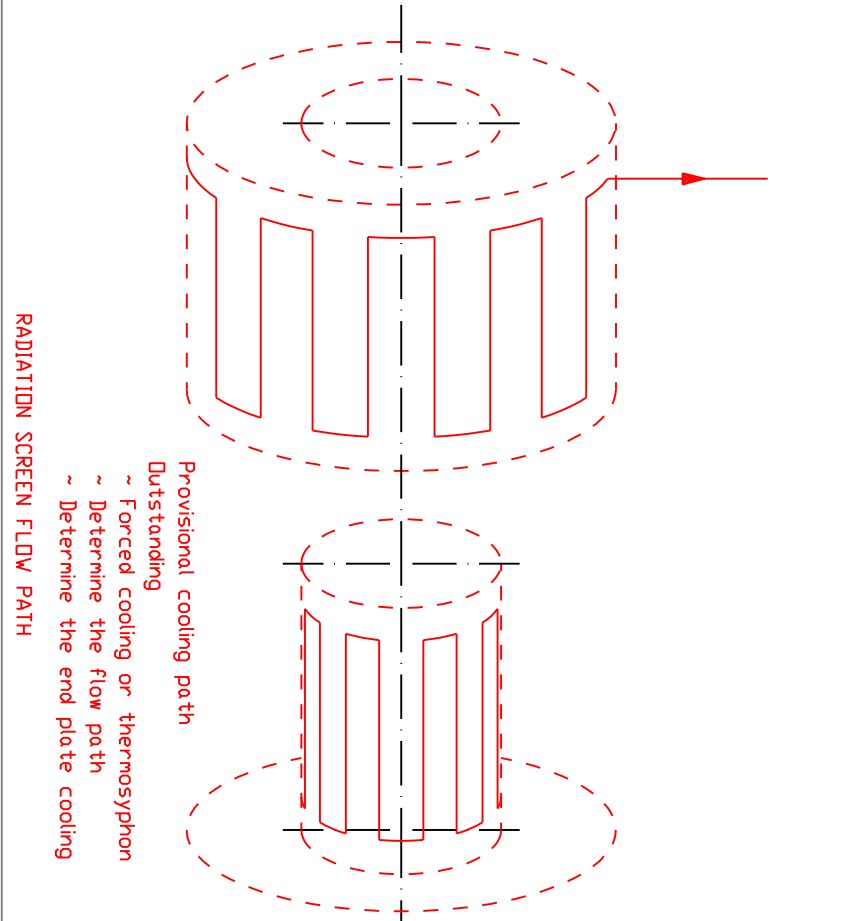
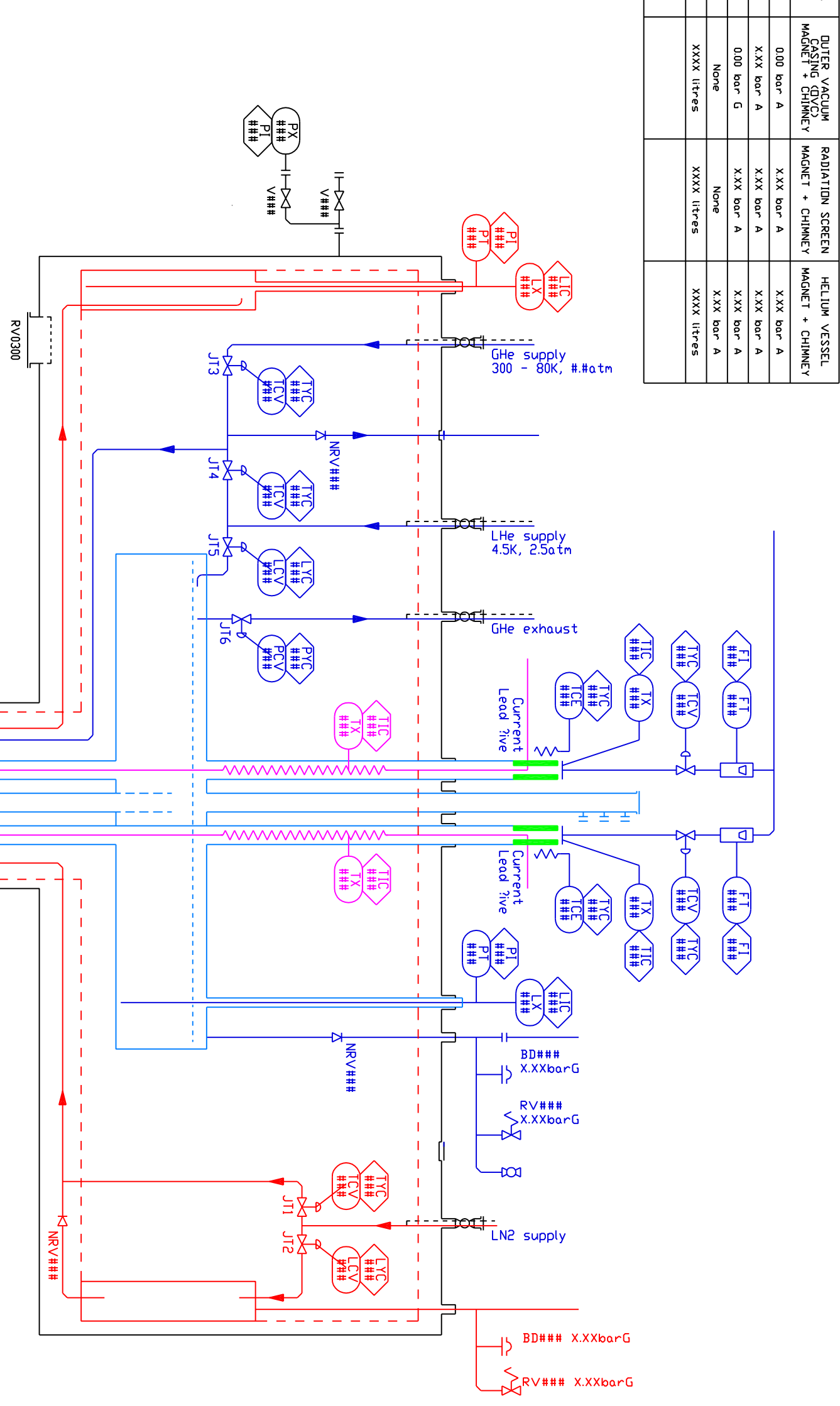


| DESCRIPTION | OUTER VACUUM CASING (QVVC) CCR | RADIATION SCREEN CCR | HELIUM VESSEL CCR | OUTER VACUUM CASING (QVVC) MAGNET + CHIMNEY | RADIATION SCREEN MAGNET + CHIMNEY | HELIUM VESSEL MAGNET + CHIMNEY |
|---------------------------|--------------------------------|----------------------|-------------------|---|-----------------------------------|--------------------------------|
| NORMAL OPERATING PRESSURE | 0.00 bar A | X.XX bar A | X.XX bar A | 0.00 bar A | X.XX bar A | X.XX bar A |
| DESIGN PRESSURE | X.XX bar A | X.XX bar A | X.XX bar A | X.XX bar A | X.XX bar A | X.XX bar A |
| RELIEF PRESSURE | 0.00 bar G | X.XX bar A | X.XX bar A | 0.00 bar G | X.XX bar A | X.XX bar A |
| BURST PRESSURE | None | None | X.XX bar A | None | None | X.XX bar A |
| VOLUME | XXXX litres | XXXX litres | XXXX litres | XXXX litres | XXXX litres | XXXX litres |
| NOTES | | | | | | |



| NUMBERING SYSTEM | MODULES |
|------------------|----------------------------|
| 01~~ | Helium vessel |
| 02~~ | Radiation Screen |
| 03~~ | Outer Vacuum Casing (QVVC) |
| 04~~ | Vent system |
| 05~~ | To be defined |
| 06~~ | To be defined |
| 07~~ | To be defined |
| 08~~ | To be defined |
| 09~~ | To be defined |
| SUBCOMPONENTS | |
| ~01 to ~39 | Valves |
| ~40 to ~59 | Heaters |
| ~60 to ~99 | Instrumentation |



OUTSTANDING
 Magnet inclination
 Vacuum breaks on the chimney
 Operating parameters
 Radiation screen flow path