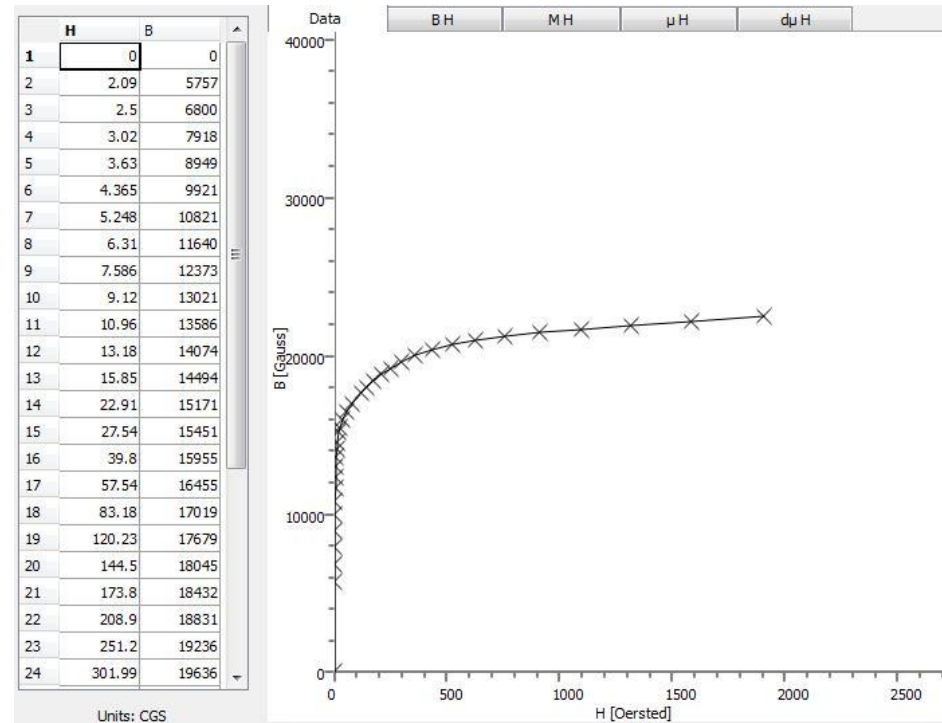


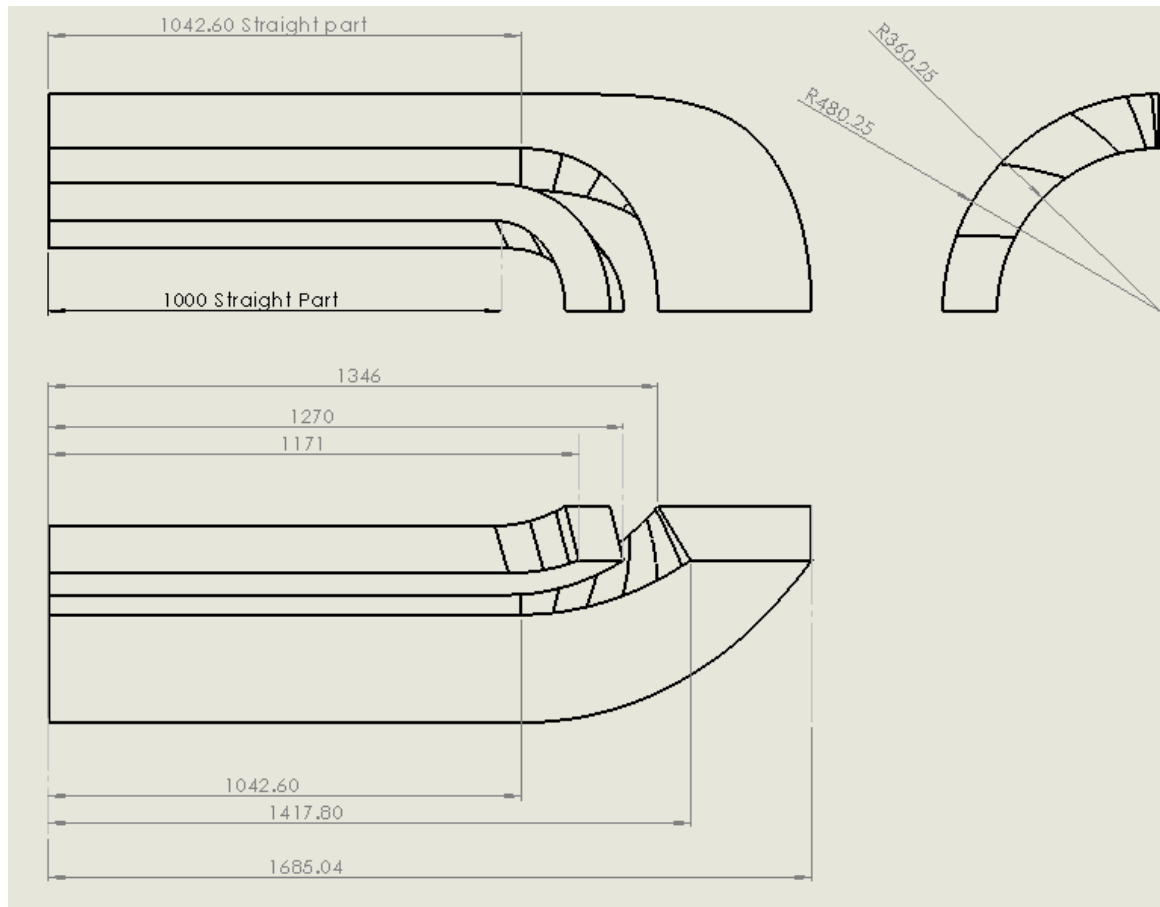
Opera

## Data input of the model

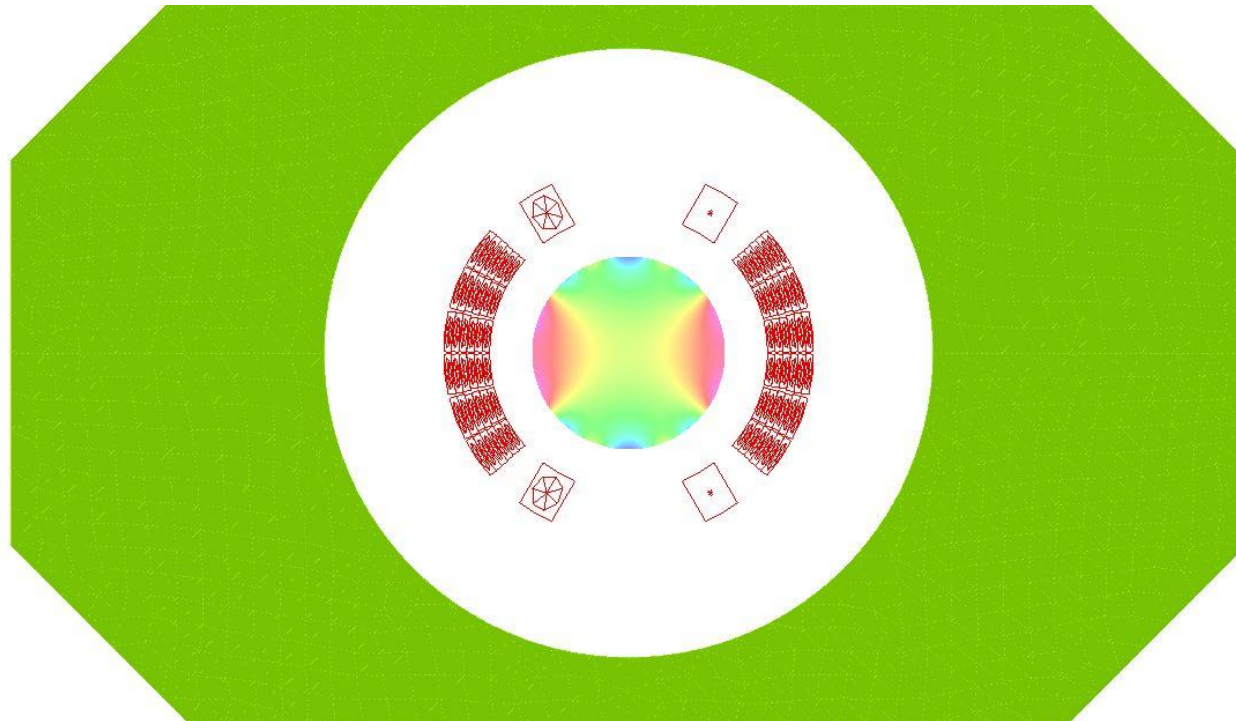
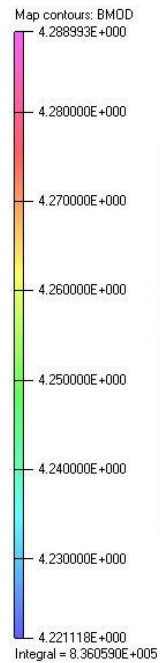
- Current 110% of the nominal Current
- Material :  
Yoke Material (BH curve)  
Tenten.Bh
- At per coil : 215857 A.t
- Number of turns : 606 Turns
- 3557.5 A



## Geometry of the coil

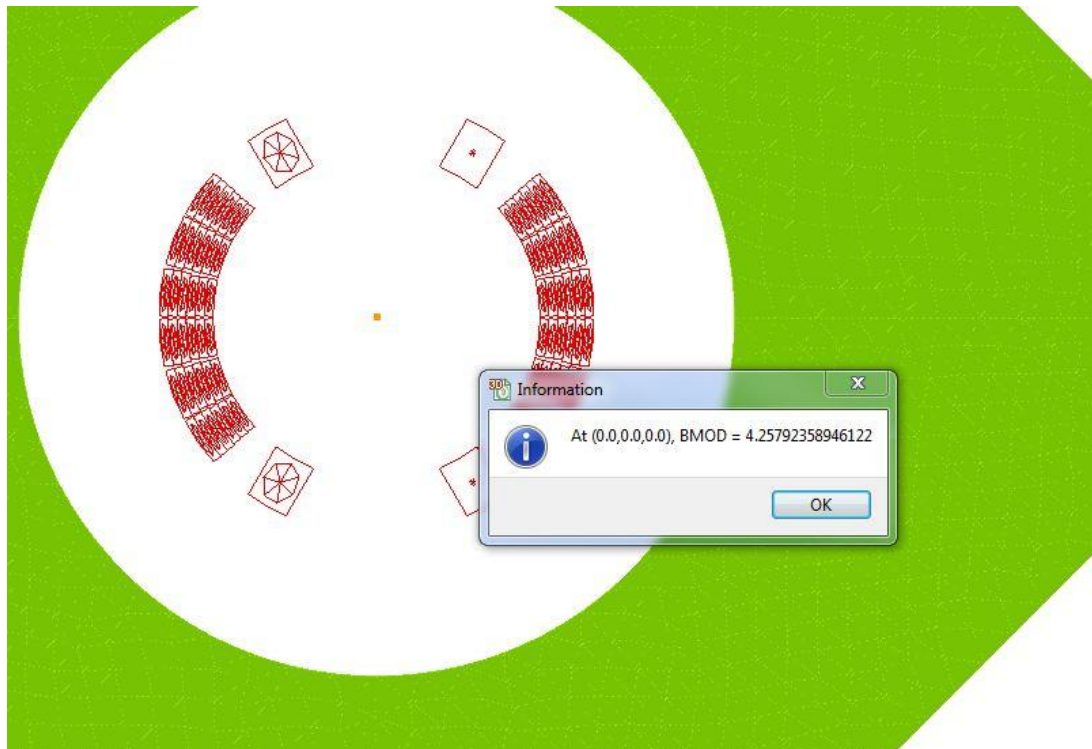


## Circular Patch of the field – Units: T- (Middle of the coil)



Opera

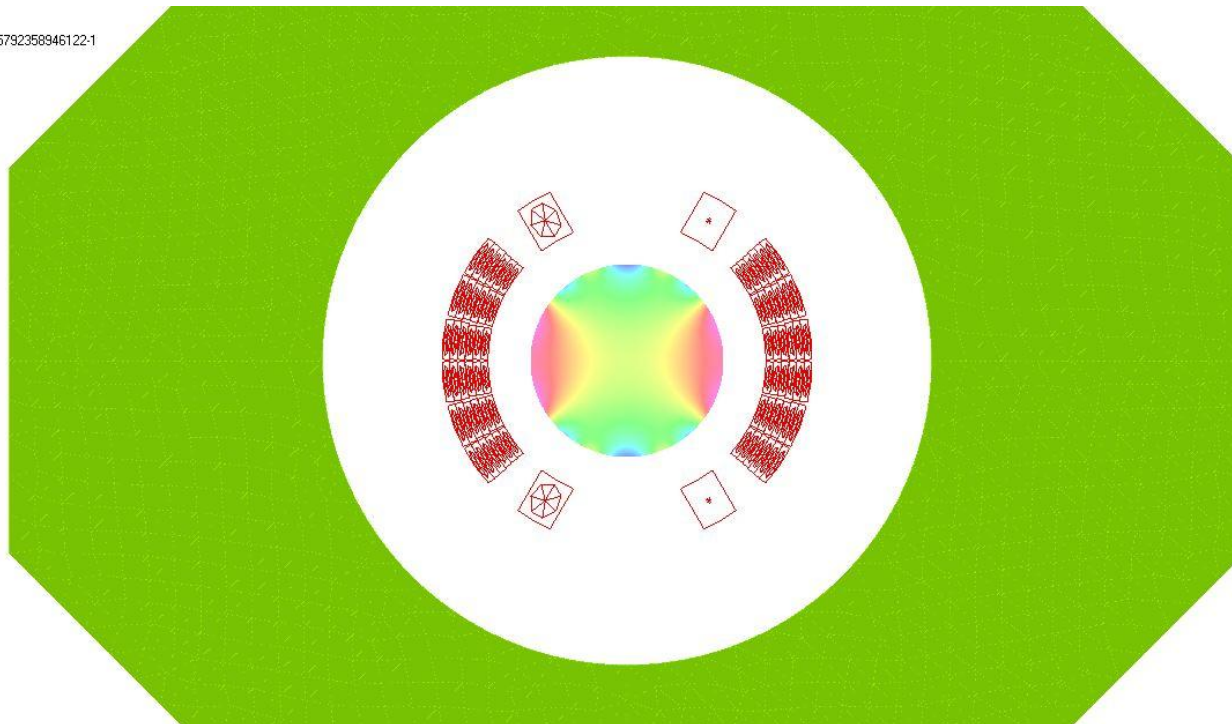
Field at the center point – *units:T*- (Middle of the coil)



Opera

## Circular patch of the homogeneity of the Bmod (Middle of the coil)

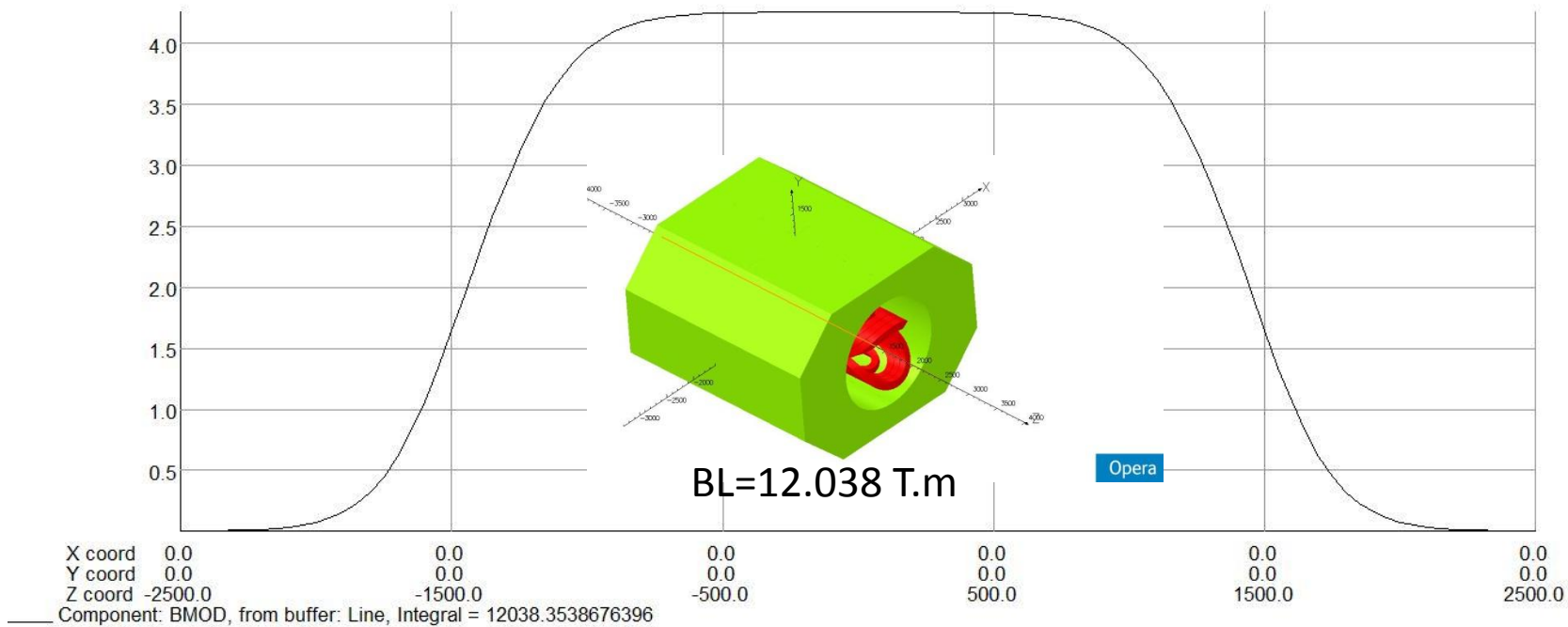
Map contours: BMOD/4.25792358946122-1  
7.296788E-003  
6.000000E-003  
4.000000E-003  
2.000000E-003  
0.000000E+000  
-2.000000E-003  
-4.000000E-003  
-6.000000E-003  
-8.000000E-003  
-8.644085E-003  
Integral = 1.417173E+001



Opera



Field on the straight line -units T en mm- (Z±3000mm)



Opera

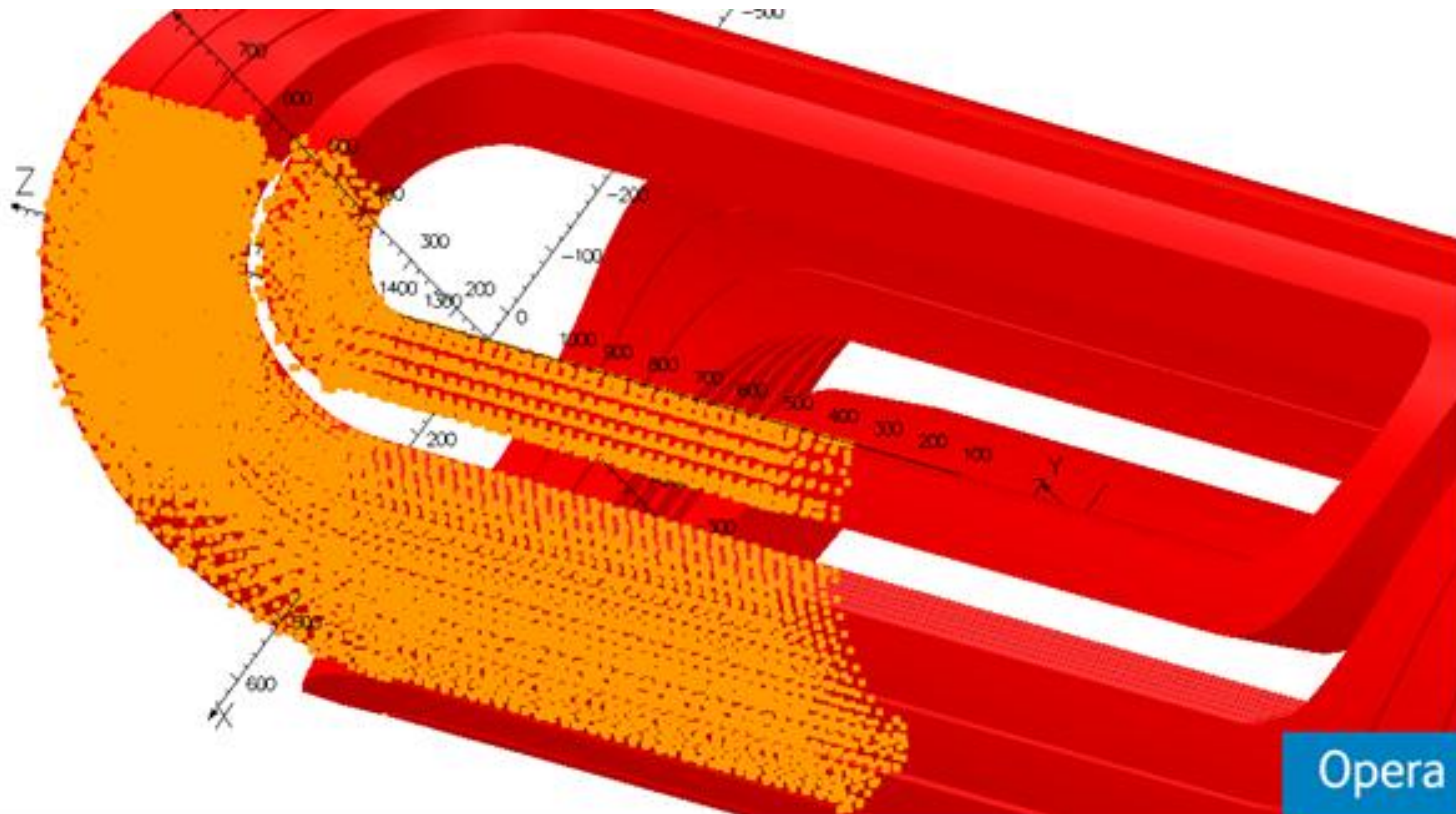
## Harmonic Values

N°	An-Values @ In T.m	Bn-Values @ In T.m	an @ In unit (1.10 <sup>-4</sup> )	bn @ In unit (1.10 <sup>-4</sup> )	lcn l @ In unit (1.10 <sup>-4</sup> )
1	0	<b>-12.025597</b>	0.00	10000	10000
2	0	9.11E-07	0.00	0.00	0.00
3	0	0.18800113	0.00	-156.33	156.33
4	0	9.031E-07	0.00	0.00	0.00
5	0	0.05542917	0.00	-46.09	46.09
6	0	8.479E-07	0.00	0.00	0.00
7	0	0.02817525	0.00	-23.43	23.43
8	0	6.605E-07	0.00	0.00	0.00
9	0	0.03345833	0.00	-27.82	27.82
10	0	9.452E-07	0.00	0.00	0.00
11	0	-0.0135419	0.00	11.26	11.26
12	0	9.719E-07	0.00	0.00	0.00
13	0	-0.0017577	0.00	1.46	1.46
14	0	8.392E-07	0.00	0.00	0.00
15	0	0.00267092	0.00	-2.22	2.22
16	0	9.82E-07	0.00	0.00	0.00
17	0	-0.0002447	0.00	0.20	0.20
18	0	1.088E-06	0.00	0.00	0.00
19	0	-0.0002228	0.00	0.19	0.19
20	0	8.949E-07	0.00	0.00	0.00
21	0	3.303E-05	0.00	-0.03	0.03
22	0	8.955E-07	0.00	0.00	0.00
23	0	2.0716E-05	0.00	-0.02	0.02
24	0	7.199E-07	0.00	0.00	0.00
25	0	4.9407E-06	0.00	0.00	0.00
26	0	1.1567E-06	0.00	0.00	0.00
27	0	-4.321E-06	0.00	0.00	0.00
28	0	8.751E-07	0.00	0.00	0.00
29	0	-1.445E-06	0.00	0.00	0.00
30	0	6.679E-07	0.00	0.00	0.00
31	0	-2.637E-06	0.00	0.00	0.00
Sum			<b>0.00</b>	<b>-242.84</b>	<b>269.08</b>

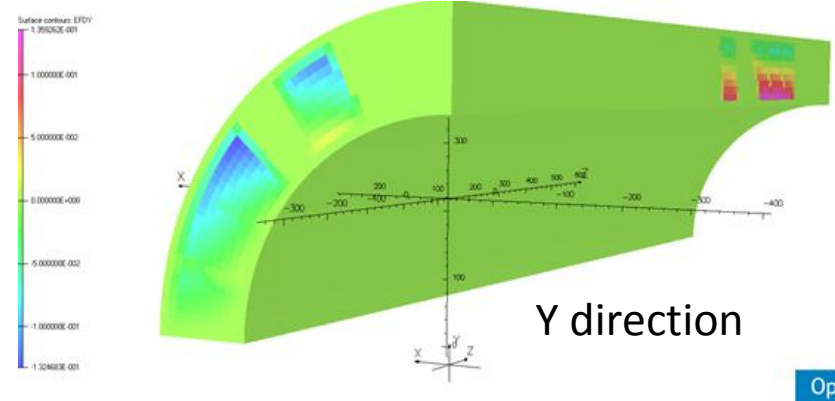
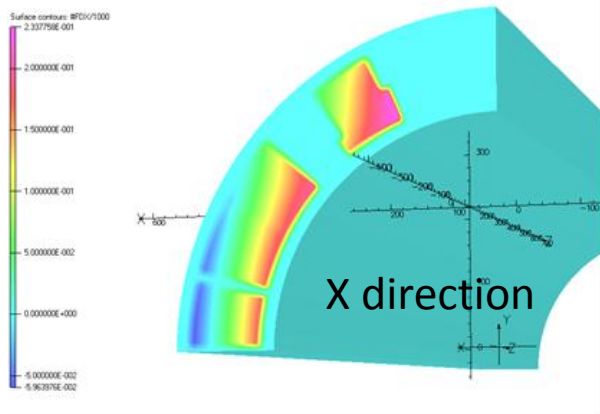
T.m	an	bn	lcn l
<b>-12.025597</b>	0.00	10000	10000
9.11E-07	0.00	0.00	0.00
<b>0.18800113</b>	0.00	<b>-156.33</b>	<b>156.33</b>
9.031E-07	0.00	0.00	0.00
<b>0.05542917</b>	0.00	<b>-46.09</b>	<b>46.09</b>
8.479E-07	0.00	0.00	0.00
<b>0.02817525</b>	0.00	<b>-23.43</b>	<b>23.43</b>
6.605E-07	0.00	0.00	0.00
<b>0.03345833</b>	0.00	<b>-27.82</b>	<b>27.82</b>
9.452E-07	0.00	0.00	0.00
<b>-0.0135419</b>	0.00	<b>11.26</b>	<b>11.26</b>
9.719E-07	0.00	0.00	0.00
<b>-0.0017577</b>	0.00	<b>1.46</b>	<b>1.46</b>
8.392E-07	0.00	0.00	0.00
<b>0.00267092</b>	0.00	<b>-2.22</b>	<b>2.22</b>
9.82E-07	0.00	0.00	0.00
<b>-0.0002447</b>	0.00	<b>0.20</b>	<b>0.20</b>
1.088E-06	0.00	0.00	0.00
<b>-0.0002228</b>	0.00	<b>0.19</b>	<b>0.19</b>
8.949E-07	0.00	0.00	0.00
<b>3.303E-05</b>	0.00	<b>-0.03</b>	<b>0.03</b>
8.955E-07	0.00	0.00	0.00
<b>2.0716E-05</b>	0.00	<b>-0.02</b>	<b>0.02</b>
7.199E-07	0.00	0.00	0.00
<b>4.9407E-06</b>	0.00	<b>0.00</b>	<b>0.00</b>
<b>1.1567E-06</b>	0.00	<b>0.00</b>	<b>0.00</b>
<b>-4.321E-06</b>	0.00	<b>0.00</b>	<b>0.00</b>
<b>8.751E-07</b>	0.00	<b>0.00</b>	<b>0.00</b>
<b>-1.445E-06</b>	0.00	<b>0.00</b>	<b>0.00</b>
<b>6.679E-07</b>	0.00	<b>0.00</b>	<b>0.00</b>
<b>-2.637E-06</b>	0.00	<b>0.00</b>	<b>0.00</b>



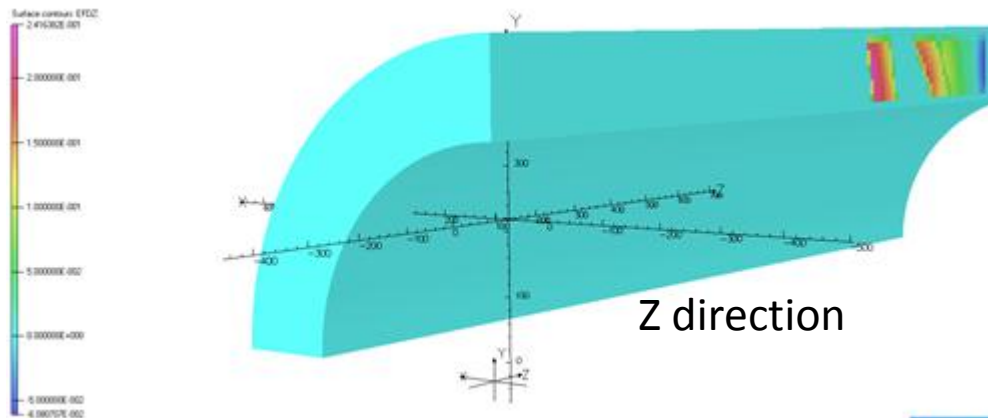
## Localization of the forces density centroids



## Density distribution of forces



Opera



Opera