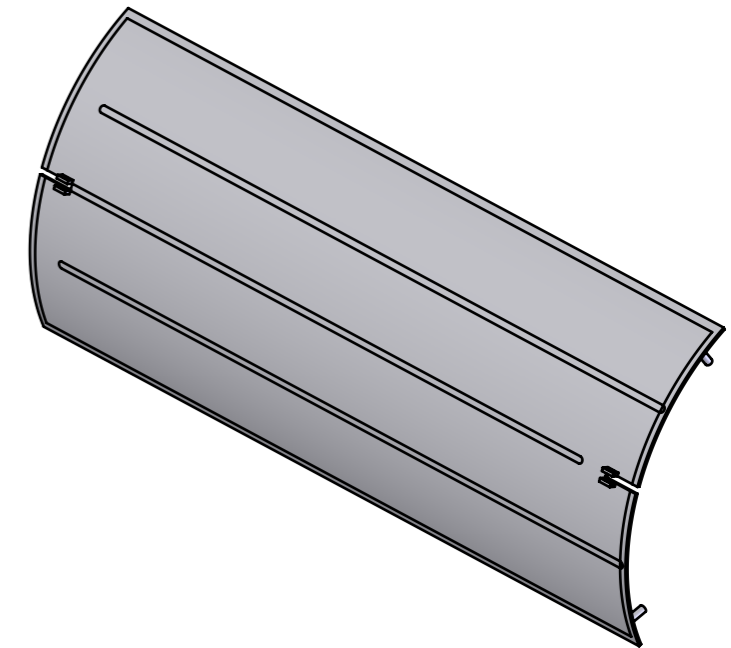
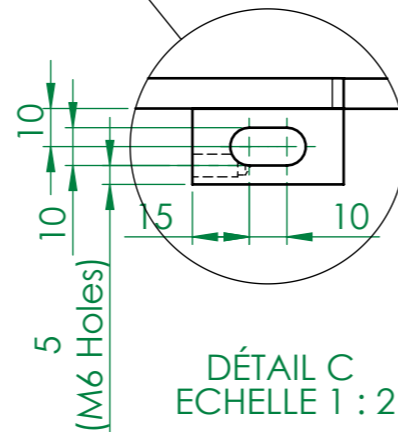
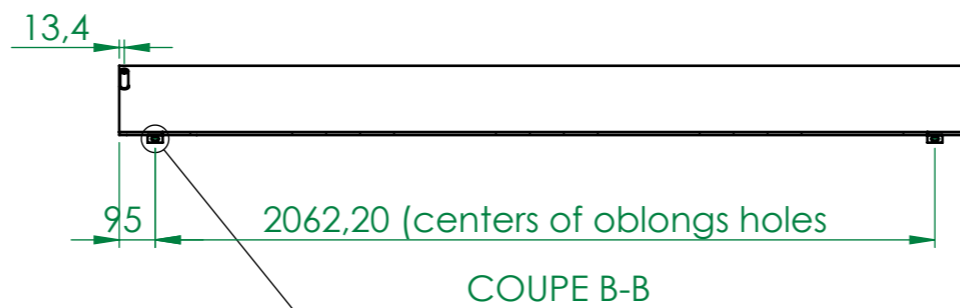
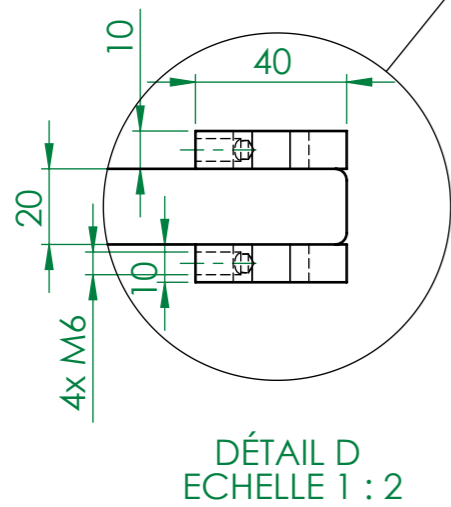
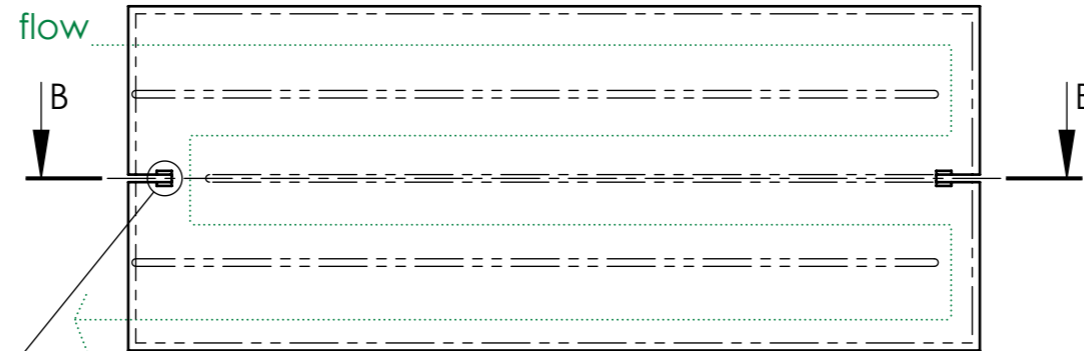
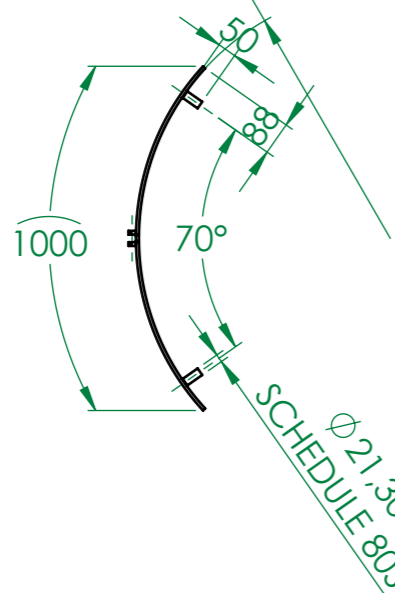



REVISIONS				
ZONE	REV.	DESCRIPTION	DATE	AUTHOR
	A	CREATION	01/07/2013	M. DELBECQ

R664,80
(no-embossing side)



part made from a double skin panel embossed, with maximum total thickness = RD2@Vue de mise en plan 10mm and gap between the two skins = 4 mm

- All dimensions in mm.
- Continuous weld along the edges and serpentine pattern.
- Content liquid nitrogen at 70°K.
- Design pressure: 6atm absolute from 60°K to 300°K.
- Design and manufacturing according to AMSE BPV.
- Final manufacturing drawings & control plan to be provided by the supplier and approved by SIGMAPHI.

 <p>ZI du prat Rue des frères Mongolfier F-56000 Vannes</p> <p>Tel(33) 02.97.01.08.80 Fax (33)02.97.01.08.81 EMAIL Contact@sigmaphi.fr</p>	Name	Date	
	Drawing	M. DELBECQ	30/09/2013
	Checked		
	Approved		
	MATERIAL:	304L (X2CrNi18-9)	
	Trait.:		
	Roughness :		
	Tol Gen		
	Supplier:		
	Weight:	70.00 Kg	
	File name:	318711-JLA-702-003	
DWG NO.	318711-JLA-702-003		
	Rev:	A	
<p>This drawing may not be used without special licence or authorisation express (Law of the 11 march 1957)</p>			
	A3	SCALE:1:20 SHEET 1 OF 1	