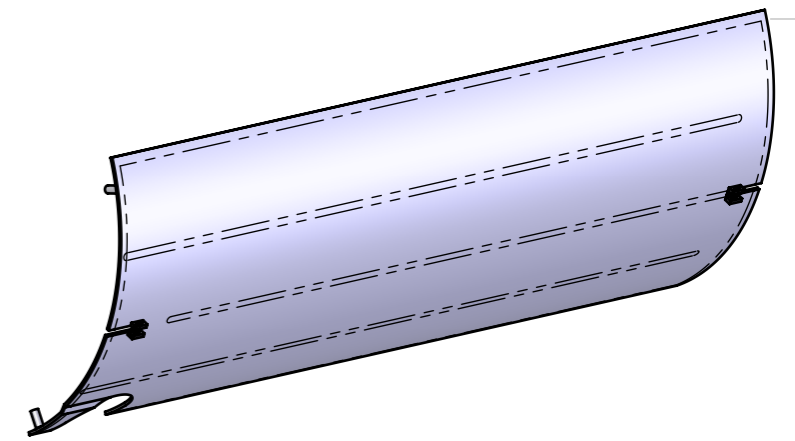
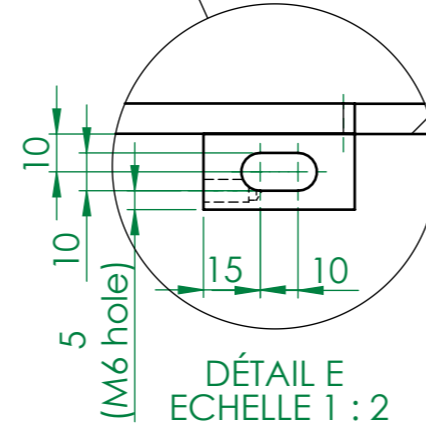
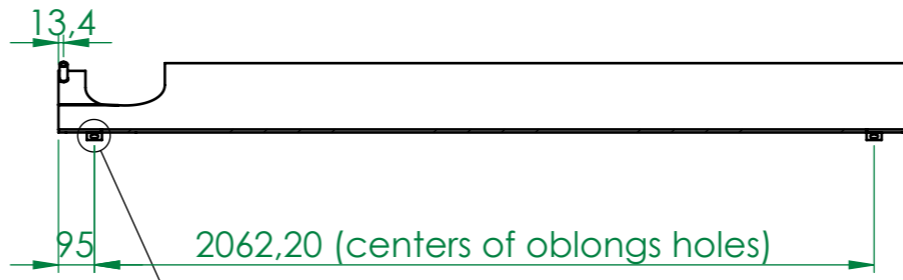
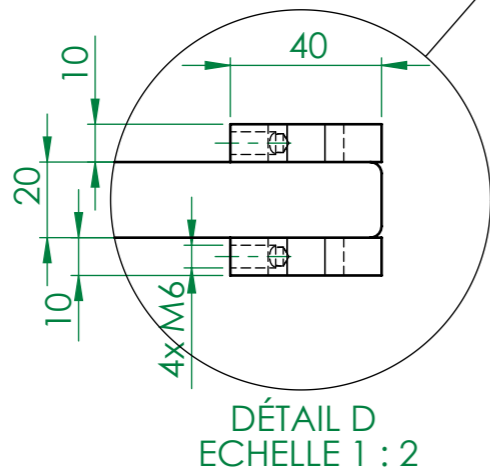
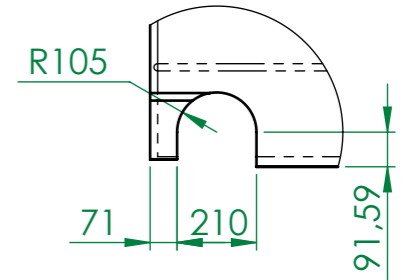
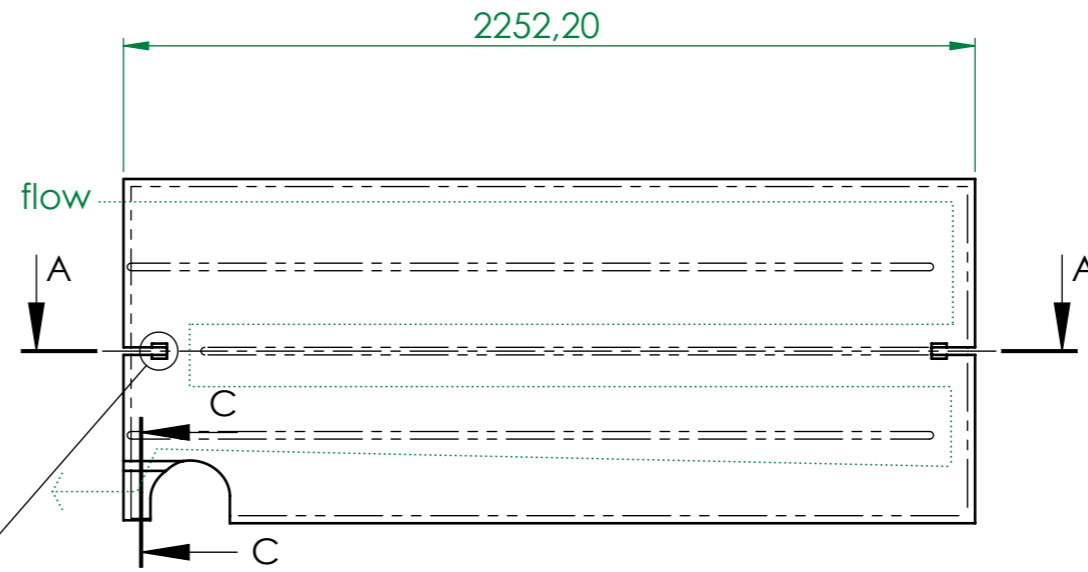
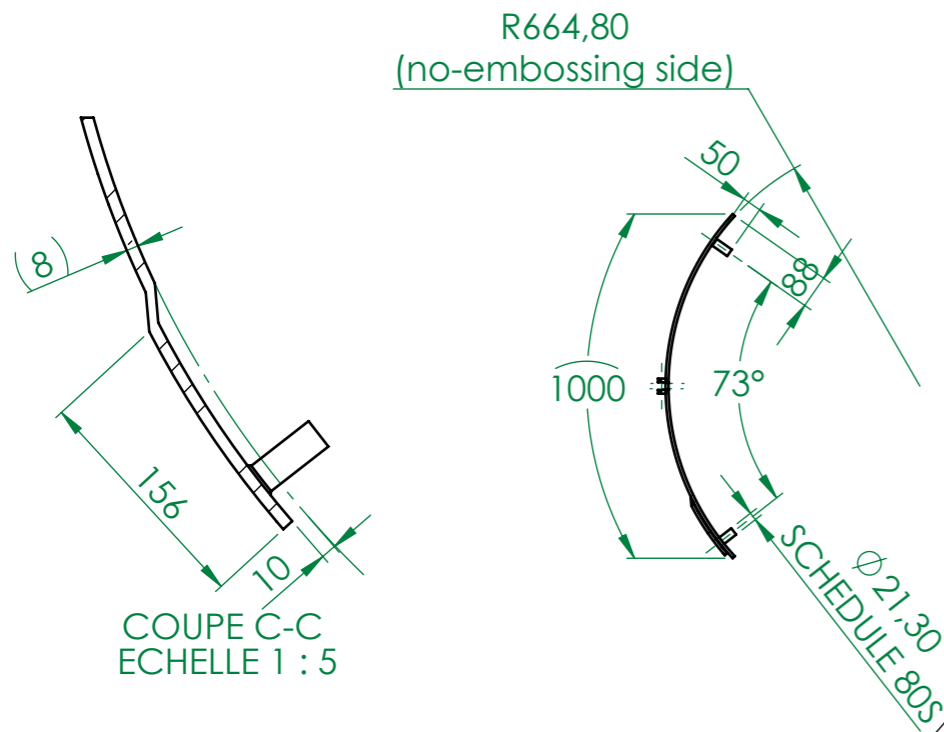


REVISIONS				
ZONE	REV.	DESCRIPTION	DATE	AUTHOR
	A	CREATION	01/07/2013	M. DELBECQ



part made from a double skin panel embossed, with maximum total thickness = (8)mm and gap between the two skins = 4 mm

- All dimensions in mm.
- Continuous weld along the edges and serpentine pattern.
- Content liquid nitrogen at 70°K.
- Design pressure: 6atm absolute from 60°K to 300°K.
- Design and manufacturing according to AMSE BPV.
- Final manufacturing drawings & control plan to be provided by the supplier and approved by SIGMAPHI.

<p>ZI du prat Rue des frères Mongolfier F-56000 Vannes</p> <p>Tel(33) 02.97.01.08.80 Fax (33)02.97.01.08.81 EMAIL Contact@sigmaphi.fr</p>	Name	M. DELBECQ	Date	30/09/2013
	Drawing			
	Checked			
	Approved			
	MATERIAL:	304L (X2CrNi18-9)		
	Trait.:			
	Roughness :			
	Tol Gen			
	Supplier:			
	Weight:	70.00 Kg		
	File name:	318711-JLA-702-004		
DWG NO.	318711-JLA-702-004			Rev:
				A
<p>This drawing may not be used without special licence or authorisation express (Law of the 11 march 1957)</p>				<p>A3 SCALE:1:20 SHEET 1 OF 1</p>