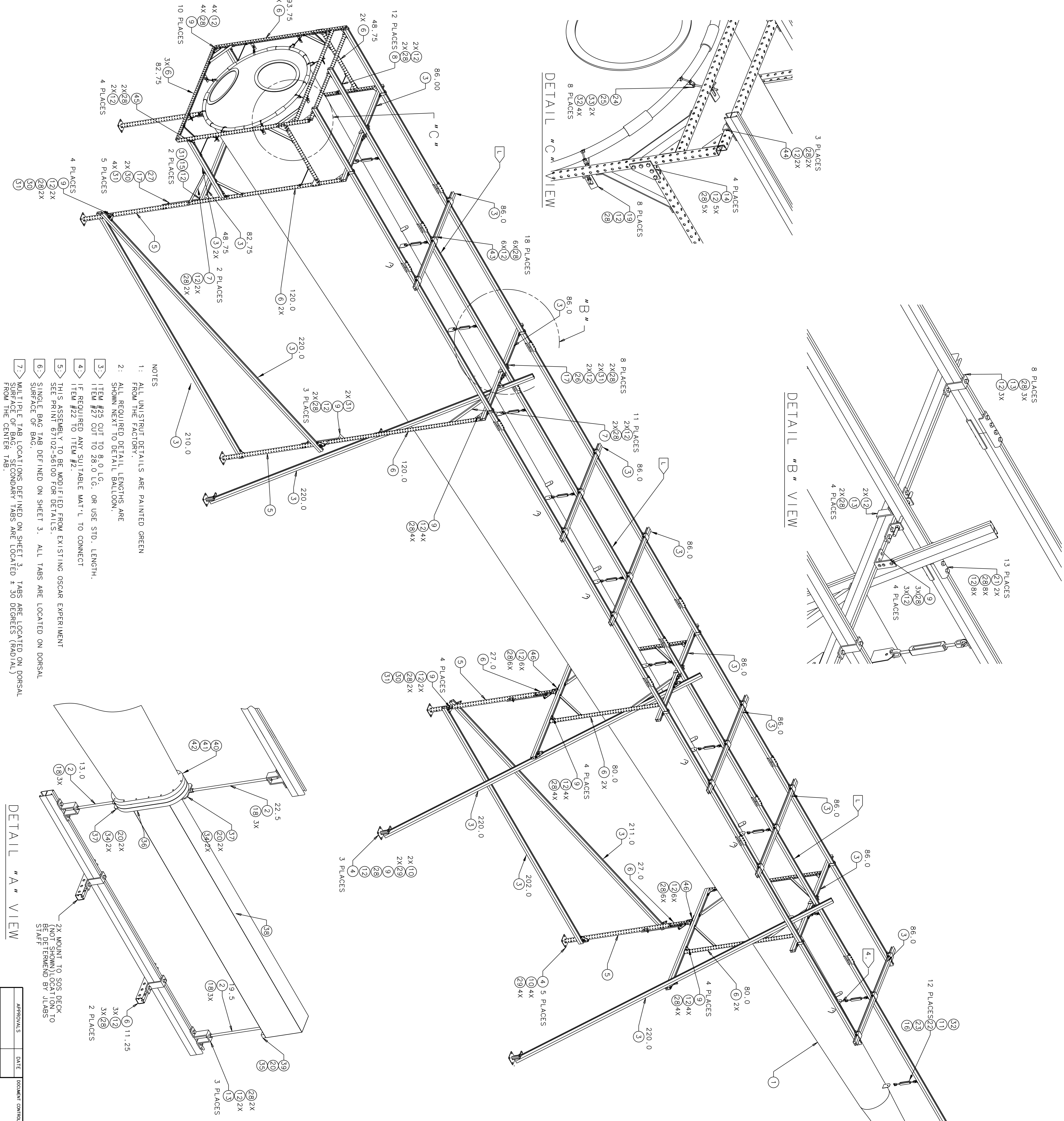


ZONE	REV	DESCRIPTION	DATE	APPROVED
		REVISION HISTORY		



NO.	QTY	PART NO.	DESCRIPTION	UNIT	REMARKS
2	46	P2348	UNISTRUT WING SHAPE FITTING	-	
4	45	P1747	UNISTRUT ANGLE FITTING	-	
3	44	P1047	UNISTRUT U SHAPE FITTING	-	
18	43	P2328	UNISTRUT WING SHAPE FITTING	-	
14	42	1/4"-20 X 2.00 LG.	SOCKET HEAD CAP SCREW	316 STAINLESS STEEL	
1	41	67102-E-56129-A	BOTTOM RING (ITEM #4)	-	
1	40	67102-56104	OSCAR HE BAG WINDOW	-	
1	39	-	ADJUSTMENT BLOCK	STAINLESS STEEL	
1	38	67504-00051	SAME HE BAG EXTENSION	-	
2	37	67102-56101-02	ADJUSTER PLATE	-	
1	36	67102-E-56129-A	GEN HE BAG WINDOW ASSEMBLY	-	
4	34	1/4"-20 X 2.0 LG.	HEX HEAD BOLT	316 STAINLESS STEEL	
16	33	5/16" STANDARD	WASHER (FOR 5/16" BOLT)	-	
44	32	5/16"-18	STANDARD HEX NUT	-	
52	31	1/2"-13	STANDARD HEX NUT	-	
18	30	1/2"-13 X 3.00	HEX HEAD BOLT	-	
26	29	1/2"-13 X .75	HEX HEAD BOLT	-	
459	28	1/2"-13 X 1.00	HEX HEAD BOLT	-	
5	27	98841A033	MASTER-CARR THREADED ROD 1/2"	-	
8	26	95412A132	MASTER-CARR THREADED STUD 1/2"	-	
8	25	90034A030	MASTER-CARR HEADED ROD 5/16"	-	
8	24	3131156	MASTER-CARR J-PIPE HANGER	-	
12	23	3014146	MASTER-CARR EYE BOLT	-	
12	22	3001154	MASTER-CARR TURNBUCKLE	-	
26	21	P4377	UNISTRUT U FITTING	-	
5	20	1/4" STANDARD	WASHER (FOR 1/4" BOLT)	316 STAINLESS STEEL	
8	19	P1498	UNISTRUT 90 DEG. ANGLE FITTING	-	
9	18	1/2"-13 UNC.	STANDARD NUT	316 STAINLESS STEEL	
13	17	P1458	UNISTRUT 90 DEG. ANGLE FITTING	-	
12	16	P2862	UNISTRUT FLAT PLATE FITTING .31	-	
2	15	P2864	UNISTRUT FLAT PLATE FITTING .50	-	
4	14	P1873	UNISTRUT FLAT PLATE FITTING	-	
17	13	P1737	UNISTRUT U SHAPE FITTING	-	
461	12	P3010	UNISTRUT CHANNEL NUT 1/2"	-	
12	11	P3007	UNISTRUT CHANNEL NUT 5/16"	-	
16	10	P3013	UNISTRUT CHANNEL NUT 1/2" (THIN)	-	
37	9	P2484	UNISTRUT ANGLE FITTING	-	
12	8	P2452	UNISTRUT KNEE BRACE	-	
11	7	P2458-30	UNISTRUT TUBULAR KNEE BRACE	-	
AR	6	P1000H3	UNISTRUT CHANNEL (LENGTH SHOWN)	-	
5	5	P9200	UNISTRUT TELESTRUT TUBE 75.0 LG.	-	
8	4	P4101	UNISTRUT POST BASE	-	
AR	3	P1001	UNISTRUT CHANNEL (LENGTH SHOWN)	-	
1	2	93250A033	MASTER-CARR HEADED ROD 1/2"	316 STAINLESS STEEL (LENGTH SHOWN)	
1	1	-	SAME HE BAG	-	

NOTES

- 1: ALL UNISTRUT DETAILS ARE PAINTED GREEN FROM THE FACTORY.
- 2: ALL REQUIRED DETAIL LENGTHS ARE SHOWN NEXT TO DETAIL BALLBOON.
- 3: ITEM #27 CUT TO 84.0 LG. OR USE STD. LENGTH.
- 4: IF REQUIRED ANY SUITABLE MAT'L TO CONNECT ITEM #27 TO ITEM #2.
- 5: THIS ASSEMBLY TO BE MODIFIED FROM EXISTING OSCAR EXPERIMENT SEE PRINT 67102-56100 FOR DETAILS.
- 6: SINGLE BAG TAB DEFINED ON SHEET 3. ALL TABS ARE LOCATED ON DORSAL SURFACE OF BAG.
- 7: MULTIPLE TAB LOCATIONS DEFINED ON SHEET 3. TABS ARE LOCATED ON DORSAL SURFACE OF BAG. SECONDARY TABS ARE LOCATED ±30 DEGREES (RADIAL) FROM THE CENTER TAB.
- 8: FABRICATION MAY, AT THE DIRECTION OF THE HALL C COORDINATOR, ADD ADDITIONAL BRACING OR SUPPORTS AS REQUIRED.
- 9: NO ATTEMPT SHOULD BE MADE TO LIFT THE ASSEMBLED FRAME IN ONE LIFT. THE FRAME MAY BE LIFTED IN THREE MAJOR SECTIONS. THESE SECTIONS ARE DEFINED BY THE SYMBOL L.

DATE	APPROVALS	REVISION	DESCRIPTION

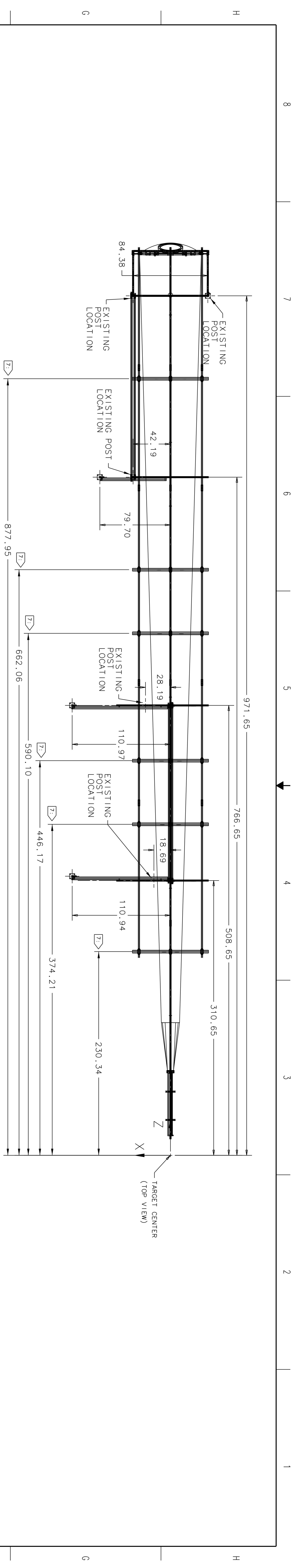
FINISH <input type="checkbox"/> POLISH <input type="checkbox"/> BURNISH <input type="checkbox"/> BRUSH <input type="checkbox"/> OTHER: _____ DO NOT SCALE DRAWING	UNISTRUT NOTED	<input type="checkbox"/> UNISTRUT <input type="checkbox"/> OTHER: _____ DO NOT SCALE DRAWING
--	-------------------	--

APPROVED <input type="checkbox"/>	DATE 01/29/08	APPROVED <input type="checkbox"/>	DATE 01/29/08
--------------------------------------	------------------	--------------------------------------	------------------

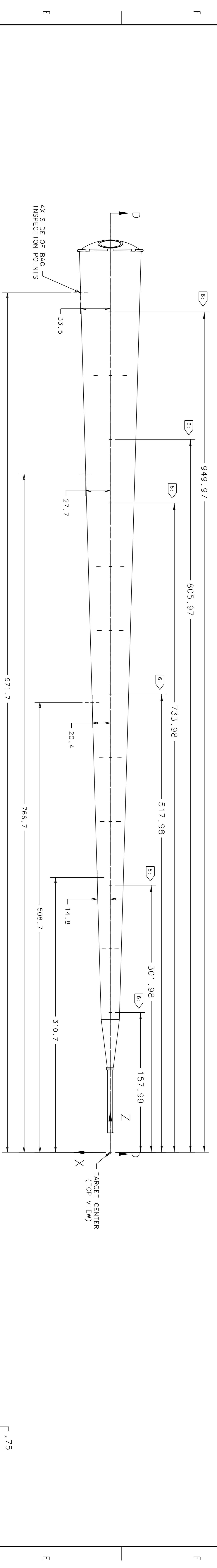
SIZE (INC. NO.) B	PROJ. NO. 67504-00050	SHEET 1 OF 3
----------------------	--------------------------	--------------

HALL C
 SANE EXPERIMENT
 HELIUM BAG ASSEMBLY

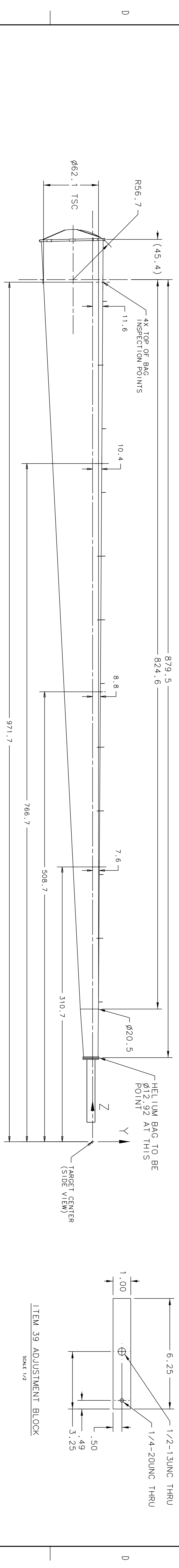
SAH
 67504-00050



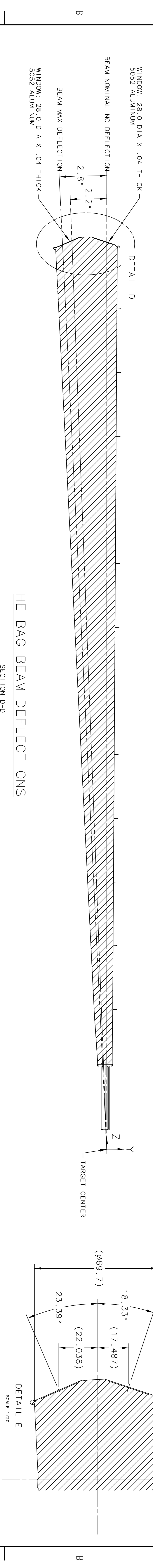
HE BAG FRAME POST LOCATIONS
LOCATIONS ARE AT THE POST CENTER (TOP VIEW)



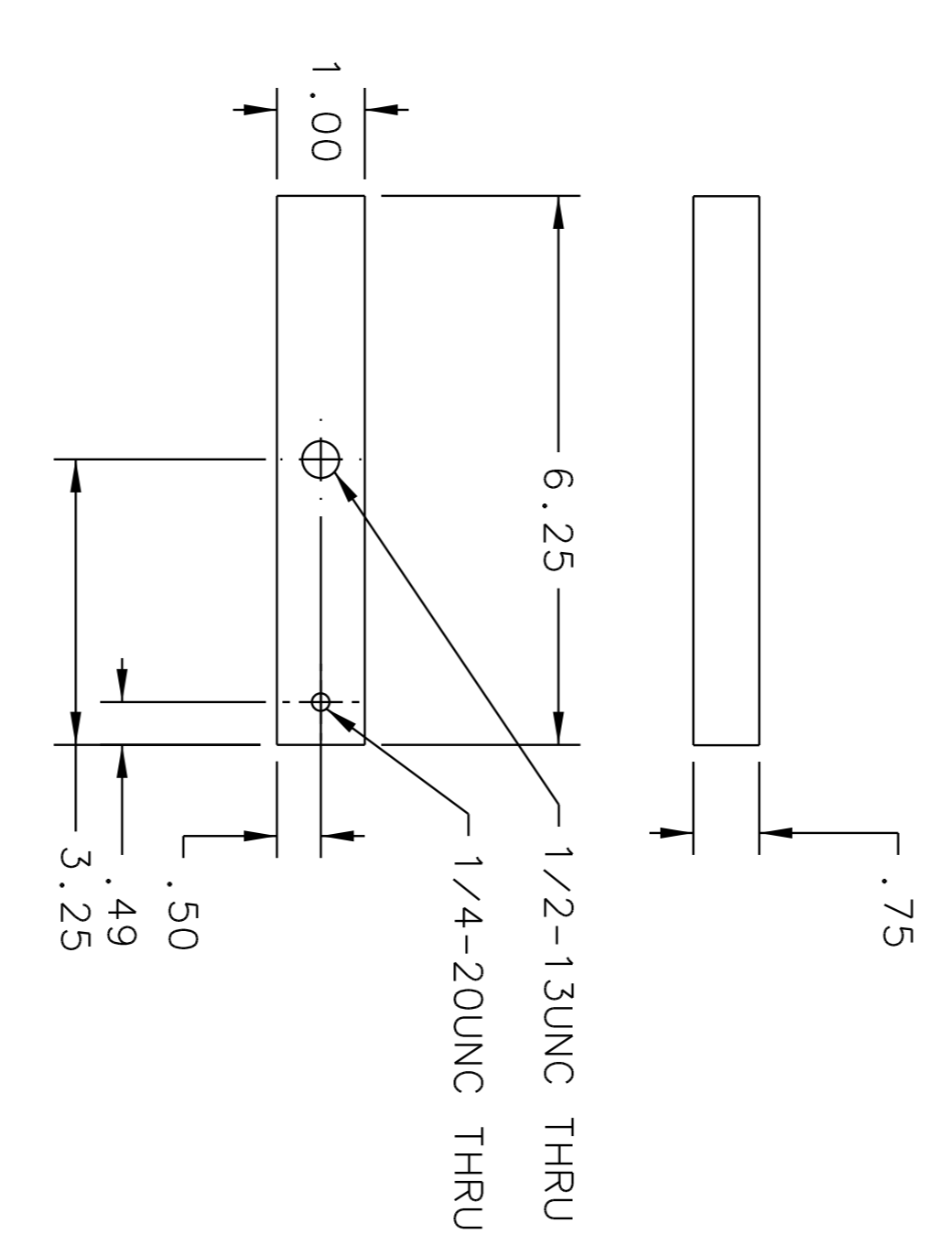
HE BAG INSPECTION POINTS
(TOP VIEW)



HE BAG INSPECTION POINTS
(SIDE VIEW)

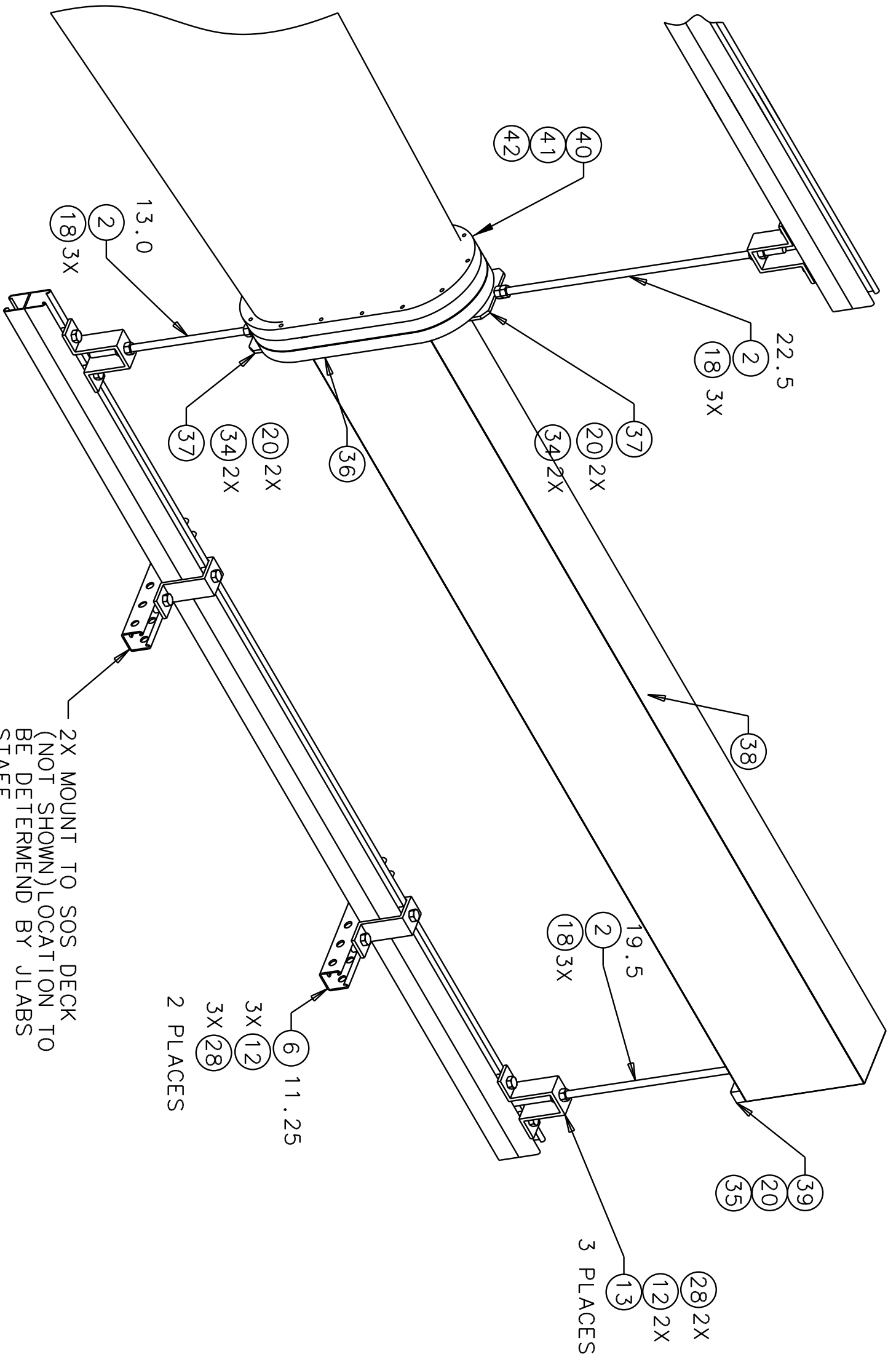


HE BAG BEAM DEFLECTIONS
SECTION D-D



ITEM 39 ADJUSTMENT BLOCK
SCALE 1/2

DOCUMENT CONTROL STAMP	REV
DATE	REV
NONE	NONE
67504-00050	3 of 3



2X MOUNT TO SOS DECK
(NOT SHOWN) LOCATION TO
BE DETERMEND BY JLABS
STAFF

DETAIL "A" VIEW

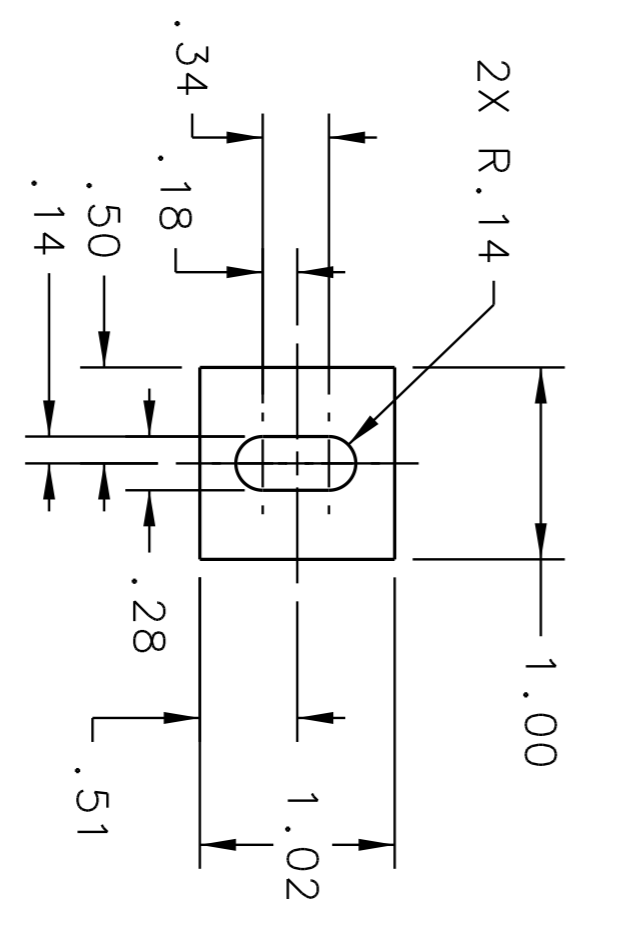
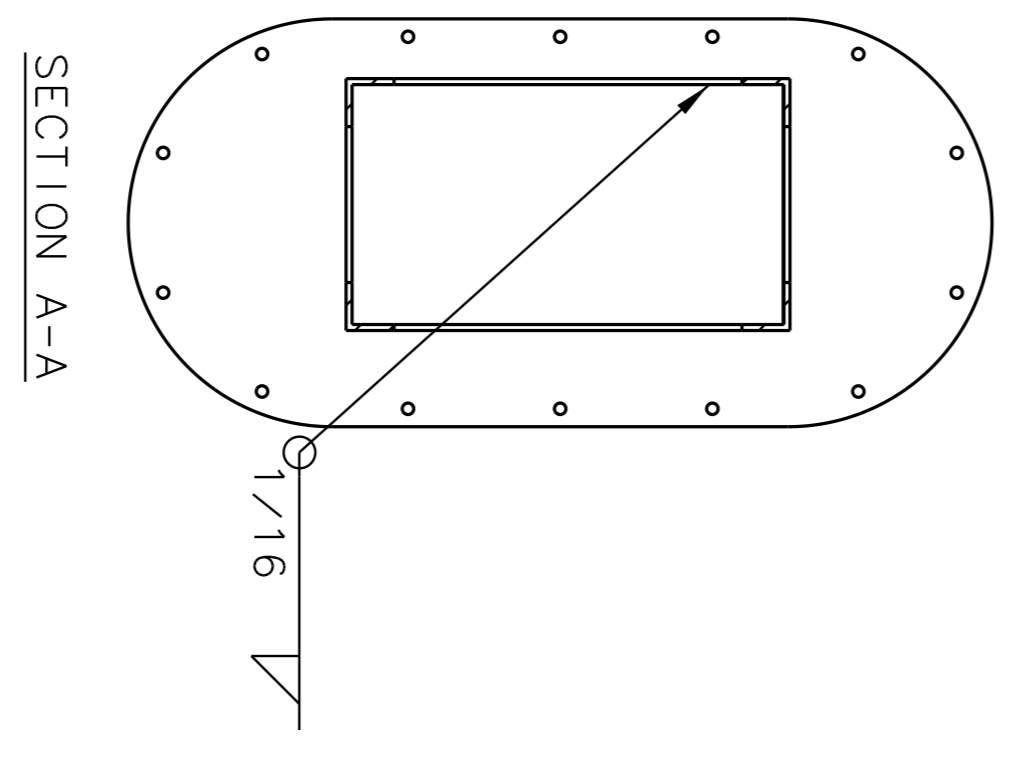
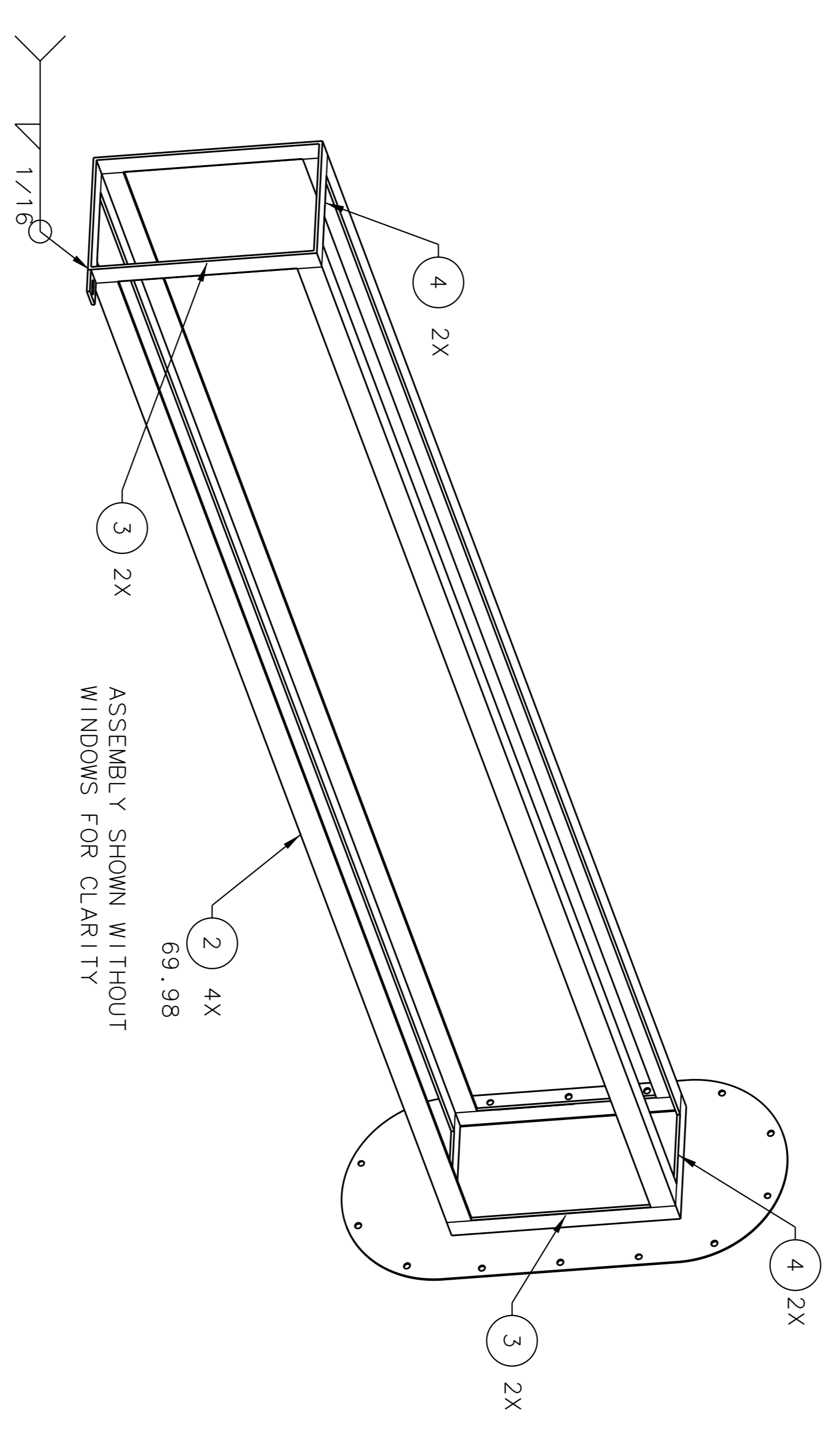
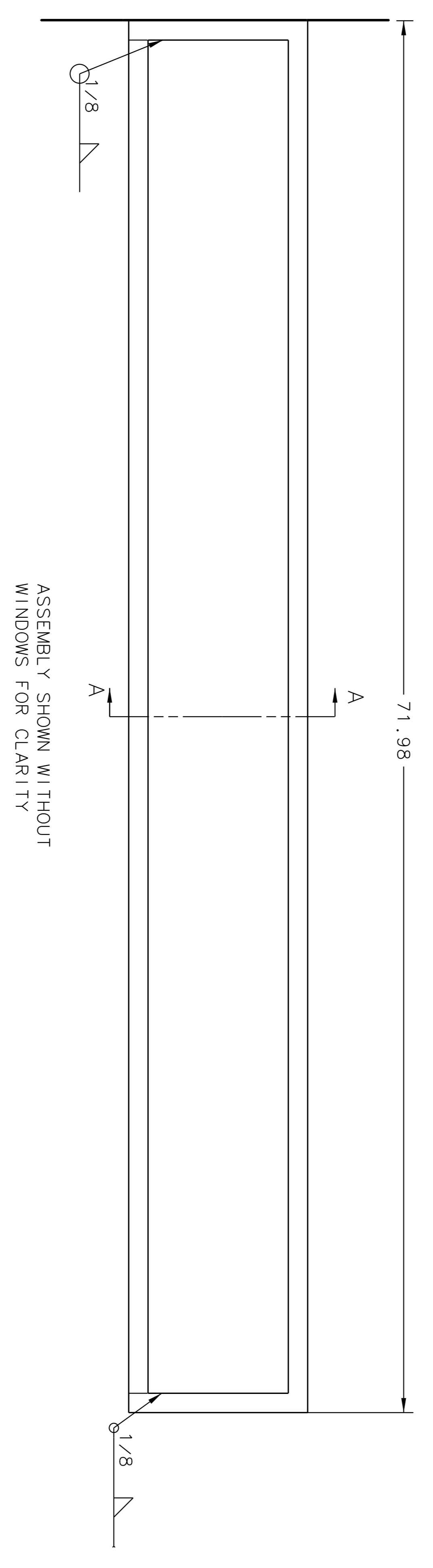
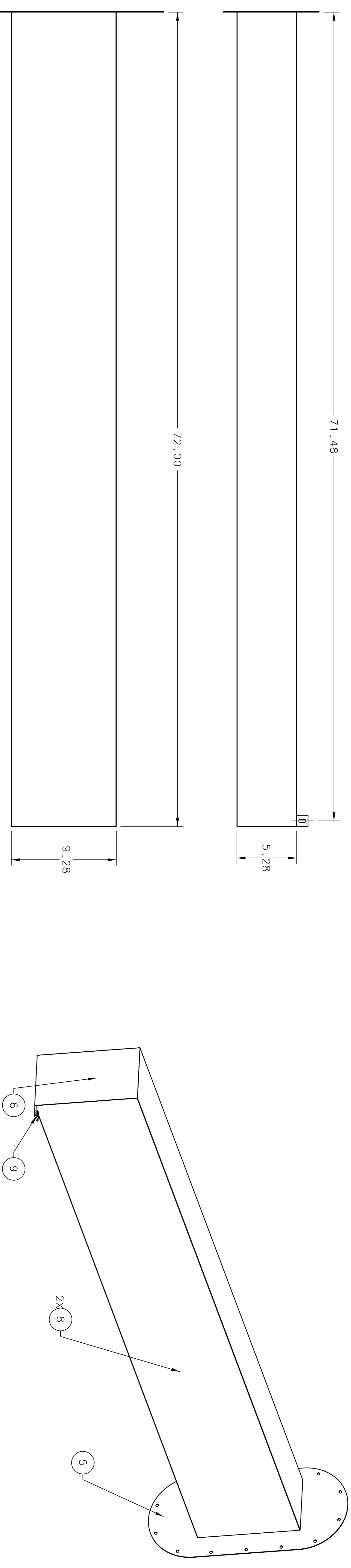
APPROVALS

DATE

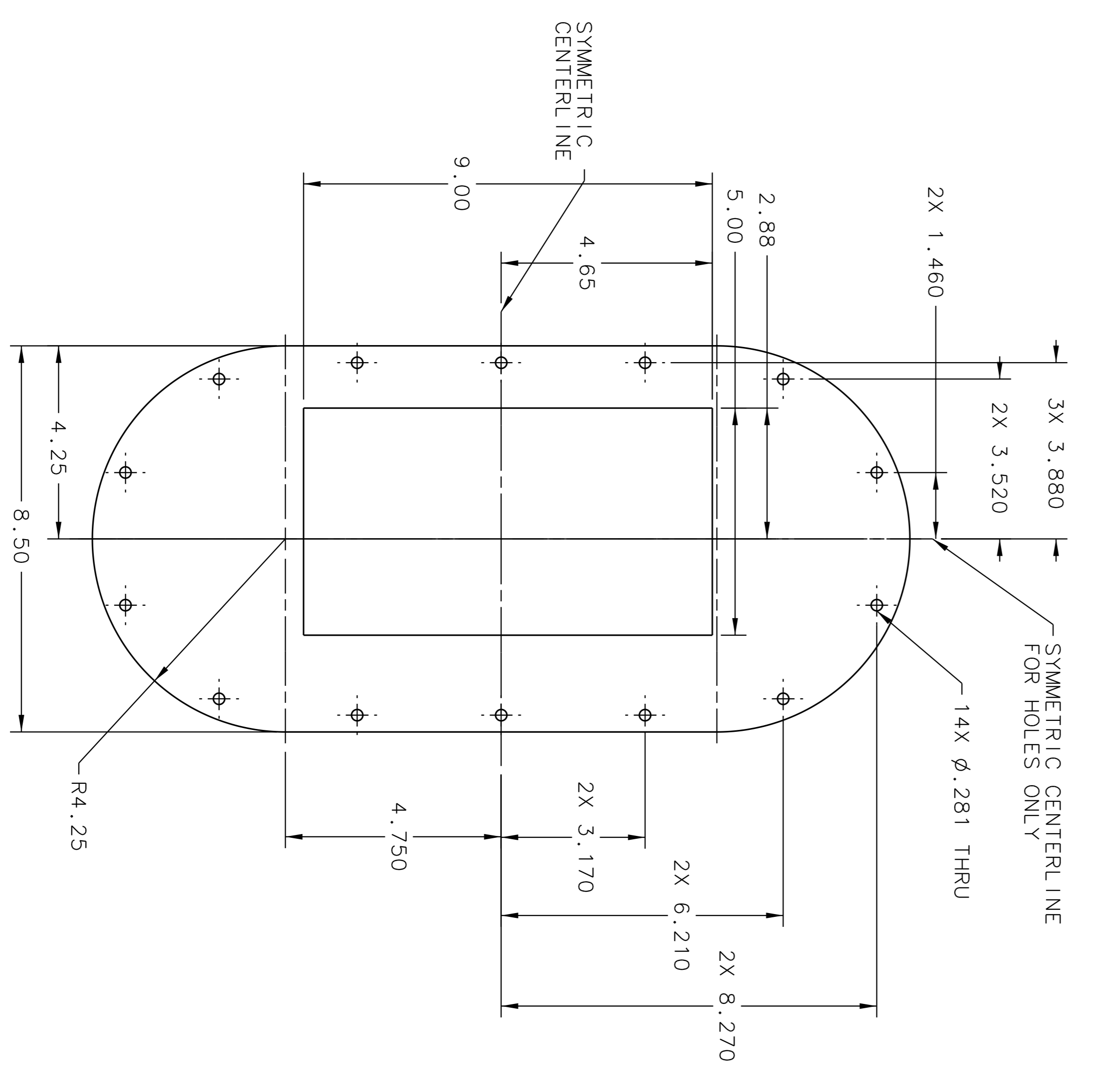
DOCUMENT CONTROL STAMP

ORSAL

L



1. WELD AND VISUALLY INSPECT PER AWS SPECIFICATIONS FOR ALUMINUM.
2. AFTER WELDING, JLAB PERSONNEL TO BOND WINDOWS (ITEMS 6 AND 7) IN PLACE USING EPOXY.
3. BREAK SHARP CORNERS 1/64 MAX.

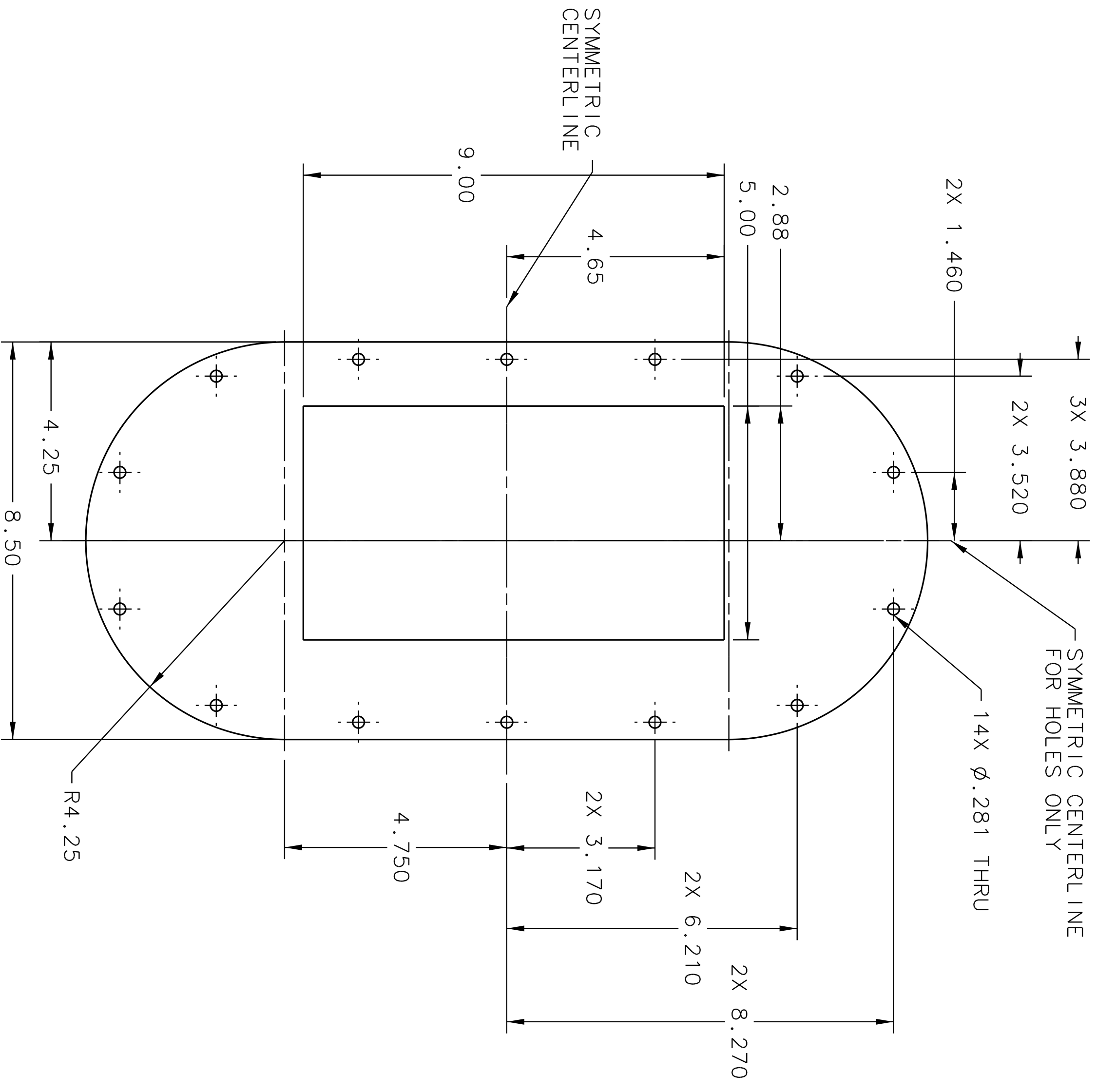


-05 ADAPTOR
SCALE 1/2

REV	DESCRIPTION	DATE	BY	CHK
1	ADJUSTMENT TAB	1.00 X 1.02 X .13		
2	VERTICAL WINDOW	9.25 X 21.97 X .0016 TH		
1	WINDOW	153.28 X 5.28 X .016 TH		
1	ADAPTOR	9.50 X 19.00 X .063 TH		
4	HORIZONTAL SUPPORT	1.00 X 4.67 X .13 TH		
4	VERTICAL SUPPORT	1.00 X 7.72 X .13 TH		
4	ANGLE	ALUMINUM 6061 1.00 X 1.00 X .13 TH		
1	HE BAG EXTENSION			

DATE	DESCRIPTION	APPROVALS	DATE	DESCRIPTION	APPROVALS
	ADAPTOR			ADAPTOR	

JEFFERSON LAB
SANE HELIUM BAG EXTENSION
HALL C
SANE EXPERIMENT



-05 ADAPTOR

SCALE 1/2

Transverse Running

