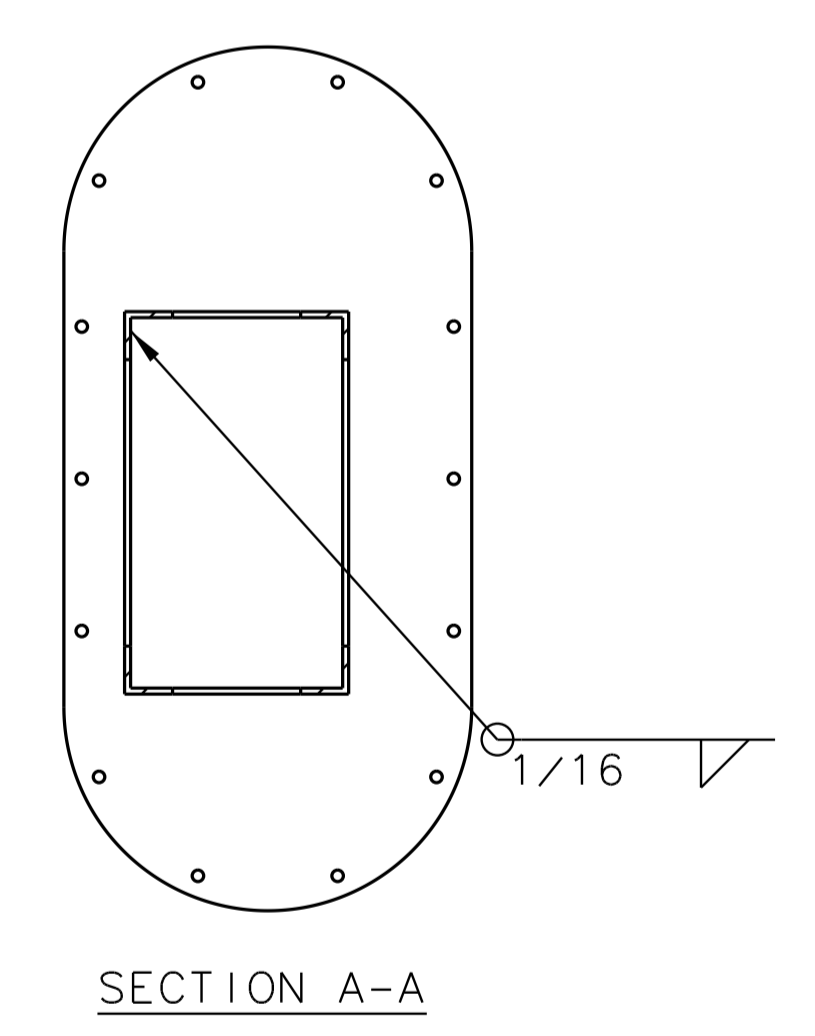
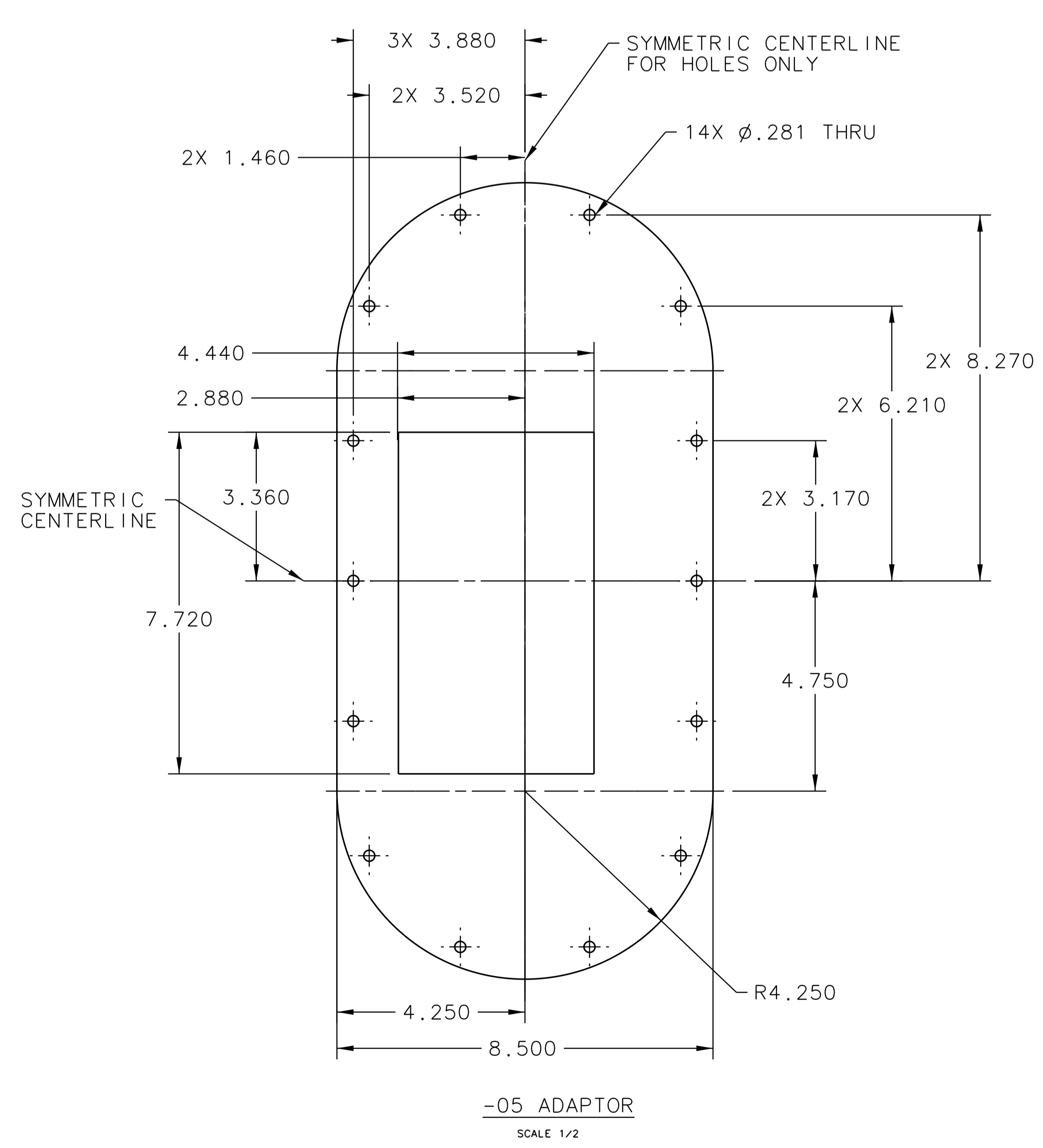
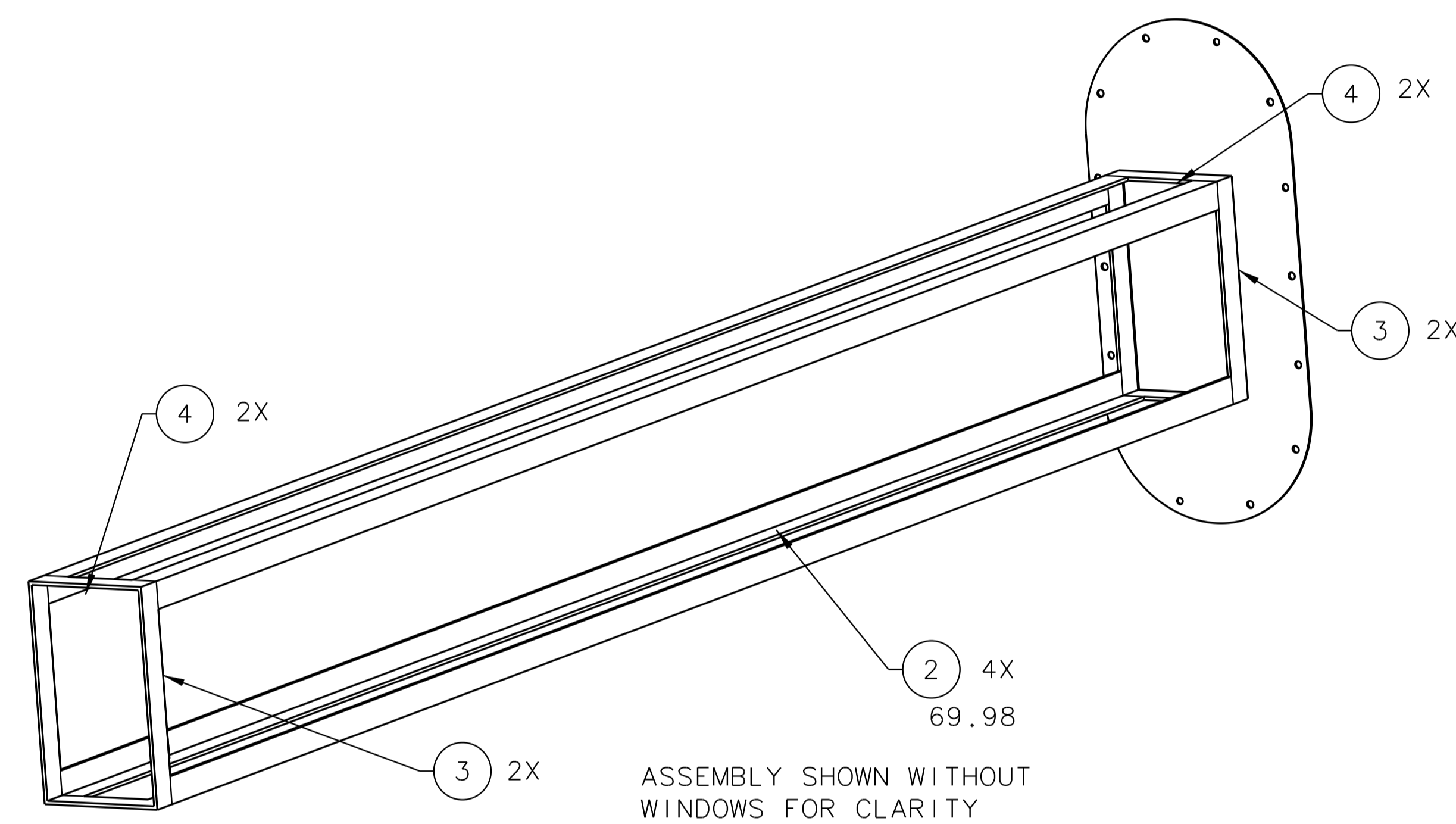
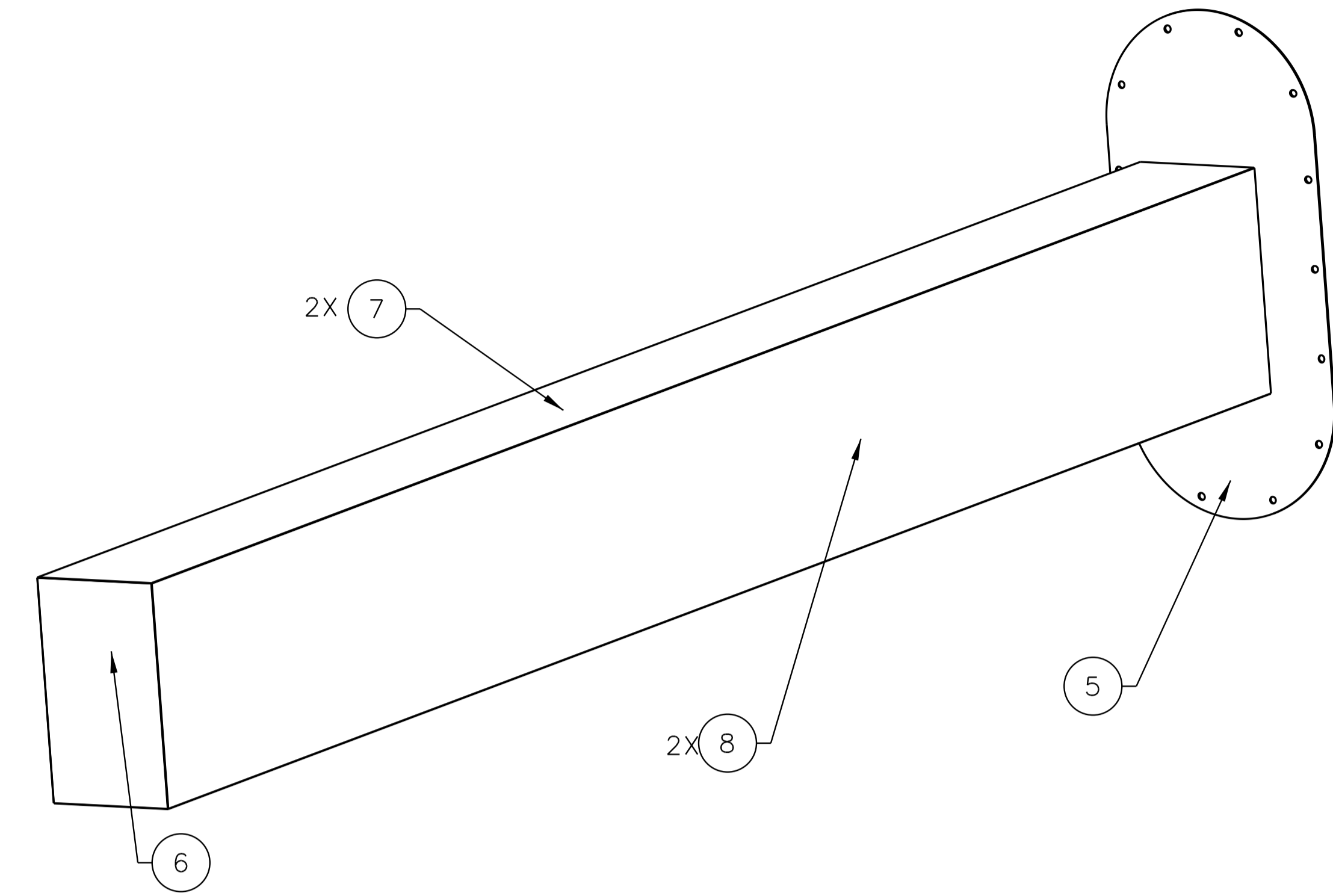
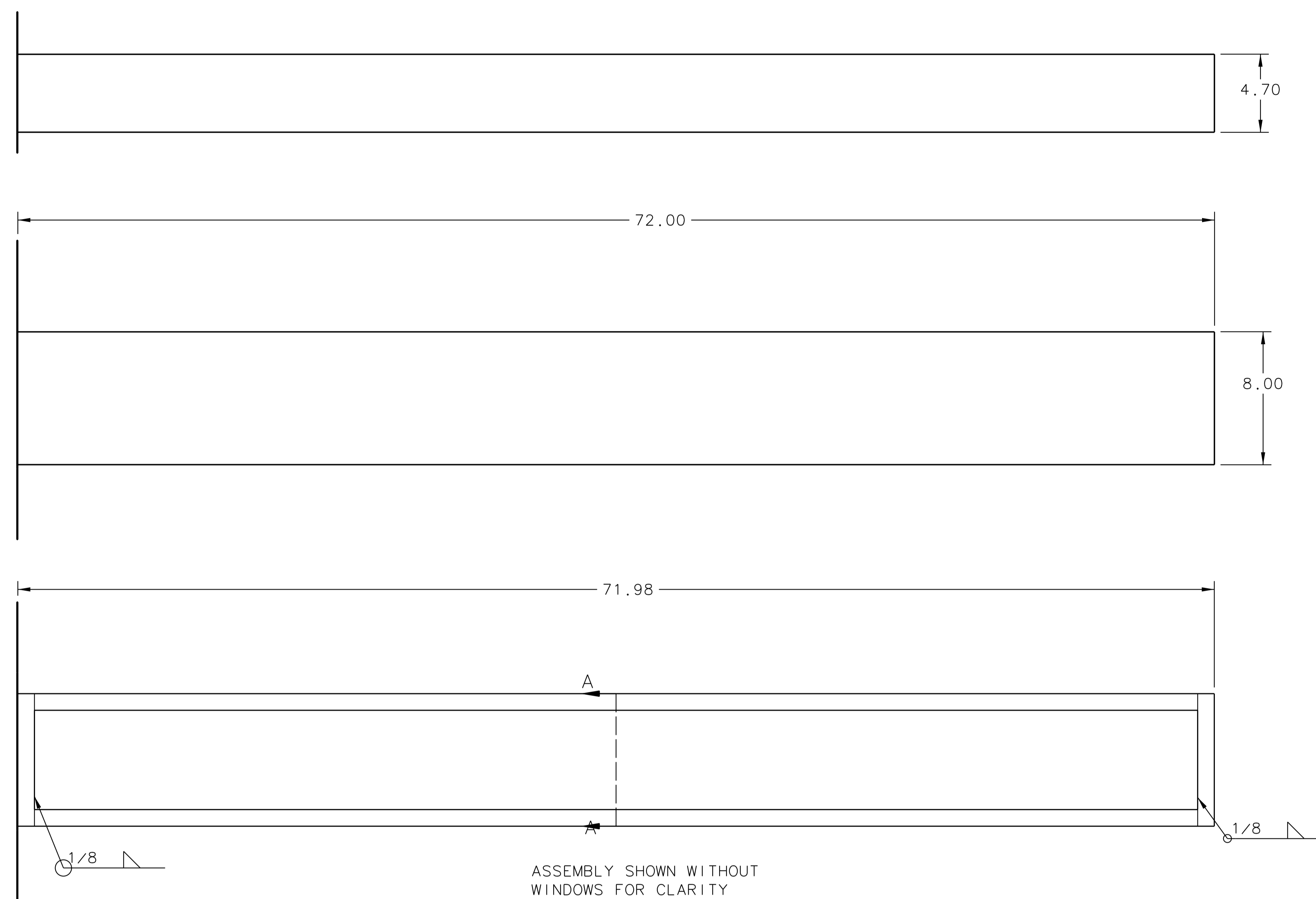


QTY	ITEM NO.	PART OR IDENTIFYING NO.	DESCRIPTION	MATERIAL SPECIFICATION	NOTES
6	44	P2328	UNISTRUT WING SHAPE FITTING	-	-
14	43	1/4"-20 X 2.00 LG.	SOCKET HEAD CAP SCREW	316 STAINLESS STEEL	-
1	42	67102-E-56129-A	BOTTOM RING (ITEM #4)	-	-
1	41	67102-56104	OSCAR HE BAG WINDOW	-	-
1	40	67504-XXXXX	ADJUSTMENT BLOCK	-	-
2	39	67102-56101-03	SLIDE ADJUSTER	-	-
1	38	67504-XXXXX	SANE HE BAG EXTENSION	-	-
2	37	67102-56101-02	ADJUSTER PLATE	-	-
1	36	67102-E-56129-A	GEN HE BAG WINDOW ASSEMBLY	-	-
2	35	1/4"-20 X .75 LG.	HEX HEAD BOLT	316 STAINLESS STEEL	-
4	34	1/4"-20 X 2.0 LG.	HEX HEAD BOLT	316 STAINLESS STEEL	-
16	33	5/16" STANDARD	WASHER (FOR 5/16" BOLT)	-	-
44	32	5/16"-18	STANDARD HEX NUT	-	-
44	31	1/2"-13	STANDARD HEX NUT	-	-
10	30	1/2"-13 X 3.00	HEX HEAD BOLT	-	-
26	29	1/2"-13 X .75	HEX HEAD BOLT	-	-
283	28	1/2"-13 X 1.00	HEX HEAD BOLT	-	-
8	27	98841A033	MCMASTER-CARR THEADED ROD 1/2"	-	-
18	26	95412A732	MCMASTER-CARR THEADED STUD 1/2"	-	-
8	25	90034A030	MCMASTER-CARR THEADED ROD 5/16"	-	-
8	24	3131T56	MCMASTER-CARR J-PIPE HANGER	-	-
12	23	3014T46	MCMASTER-CARR EYE BOLT	-	-
12	22	3001T54	MCMASTER-CARR TURNBUCKLE	-	-
8	21	P4377	UNISTRUT U FITTING	-	-
6	20	1/4" STANDARD	WASHER (FOR 1/4" BOLT)	316 STAINLESS STEEL	-
8	19	P1498	UNISTRUT 90 DEG. ANGLE FITTING	-	-
9	18	1/2-13 UNC.	STANDARD NUT	316 STAINLESS STEEL	-
13	17	P1458	UNISTRUT 90 DEG. ANGLE FITTING	-	-
12	16	P2862	UNISTRUT FLAT PLATE FITTING .31	-	-
2	15	P2864	UNISTRUT FLAT PLATE FITTING .50	-	-
8	14	P1873	UNISTRUT FLAT PLATE FITTING	-	-
9	13	P1737	UNISTRUT U SHAPE FITTING	-	-
285	12	P3010	UNISTRUT CHANNEL NUT 1/2"	-	-
12	11	P3007	UNISTRUT CHANNEL NUT 5/16"	-	-
12	10	P3013	UNISTRUT CHANNEL NUT 1/2" (THIN)	-	-
24	9	P2484	UNISTRUT ANGLE FITTING	-	-
12	8	P2452	UNISTRUT KNEE BRACE	-	-
3	7	P2458-30	UNISTRUT TUBULAR KNEE BRACE	-	-
AR	6	P1000H3	UNISTRUT CHANNEL (LENGTH SHOWN)	-	-
5	5	P9200	UNISTRUT TELESTRUT TUBE 75.0 LG.	-	-
8	4	P4101	UNISTRUT POST BASE	-	-
AR	3	P1001	UNISTRUT CHANNEL (LENGTH SHOWN)	-	-
1	2	93250A033	MCMASTER-CARR THEADED ROD 1/2"	316 STAINLESS STEEL (LENGTH SHOWN)	-
1	1	-	SANE HE BAG	-	-

APPROVALS APPROVED: _____ DATE: 01/29/08 CHECKED: _____ DRAWN: _____ FORGED: _____ THIRD ANGLE PROJECTION	TRACKING NO. N/A APPROVALS: _____ DATE: _____ APPROVED: _____	United States Department of Energy Jefferson Lab Thomas Jefferson National Accelerator Facility Newport News Virginia	HALL C SANE EXPERIMENT HELIUM BAG ASSEMBLY	SIZE: B DWG. NO.: 67504-XXXXX REV. NO.: _____ SHEET 1 OF 2

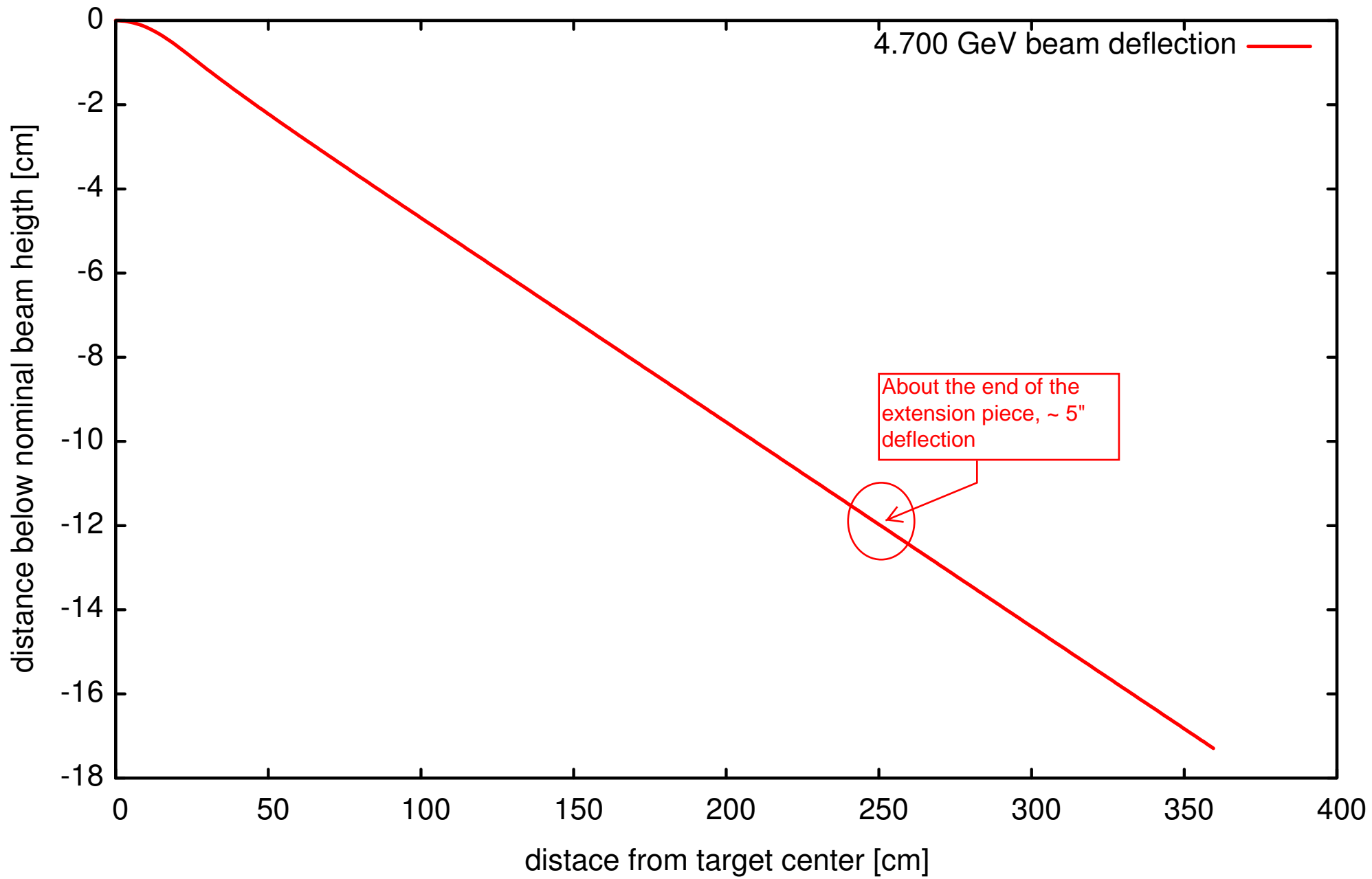
REVISION HISTORY				
ZONE	REV	DESCRIPTION	DATE	APPROVED

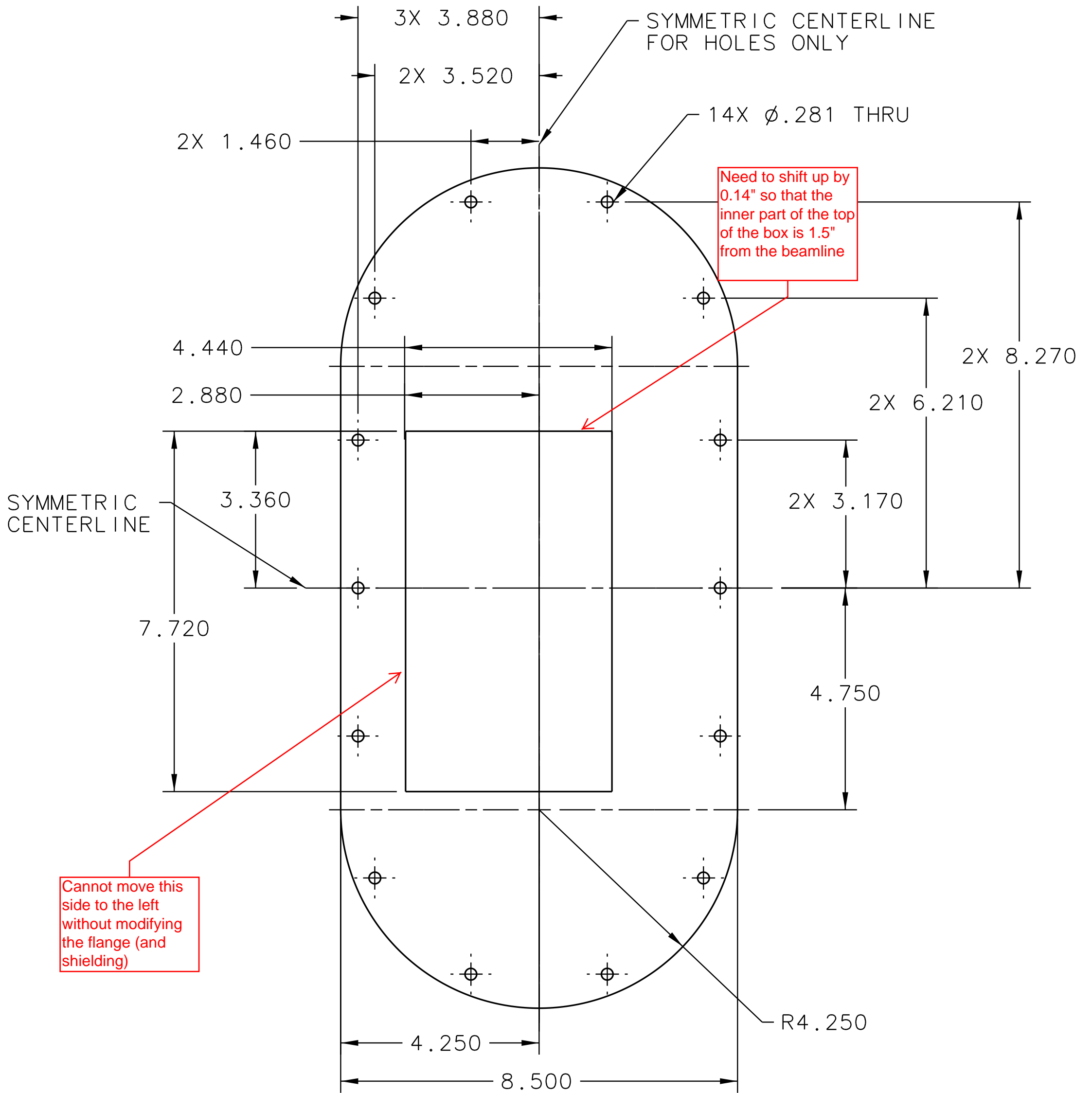


1. ADHERE TO AWS STANDARDS FOR WELDING ALUMINUM.
2. AFTER WELDING, JLAB PERSONNEL TO BOND WINDOWS (ITEMS -06, -07 AND -08) IN PLACE USING EPOXY.
3. BREAK SHARP CORNERS 1/64 MAX.

QTY	ITEM	PART OR IDENTIFYING NO.	DESCRIPTION	MATERIAL SPECIFICATION	NOTES
2	8	-08	VERTICAL WINDOW	ALUMINUM 3003 7.97 X 71.97 X .016 TH	-
2	7	-07	HORIZONTAL WINDOW	ALUMINUM 3003 4.67 X 71.97 X .016 TH	-
1	6	-06	FRONT WINDOW	ALUMINUM 3003 4.67 X 5.97 X .016 TH	-
1	5	-05	ADAPTOR	ALUMINUM 6061 8.50 X 18.00 X .063 TH	-
4	4	-04	HORIZONTAL SUPPORT	ALUMINUM 6061 1.00 X 4.67 X .13 TH	-
4	3	-03	VERTICAL SUPPORT	ALUMINUM 6061 1.00 X 7.72 X .13 TH	-
4	2	-02	ANGLE	ALUMINUM 6061 1.00 X 1.00 X .13 TH	-
1	1	-01	HE BAG EXTENSION	-	-

DOCUMENT CONTROL STAMP	TRACKING NO. N/A	APPROVALS	DATE	UNITED STATES DEPARTMENT OF ENERGY
MATERIAL NOTED	THIRD ANGLE PROJECTION	DRAWN	01/30/08	JEFFERSON LAB
FINISH: MACHINED SURFACES & BREAK ALL SHARP EDGES. DO NOT SCALE DRAWING.		CHECKED		HALL C SANE EXPERIMENT SANE HELIUM BAG EXTENSION
		APPROVED		SIZE: B DWG. NO. 67504-XXXXX
		APPROVED		SCALE: NONE 100 IN ASY NO. 67504-XXXXX SHEET 1 OF 1



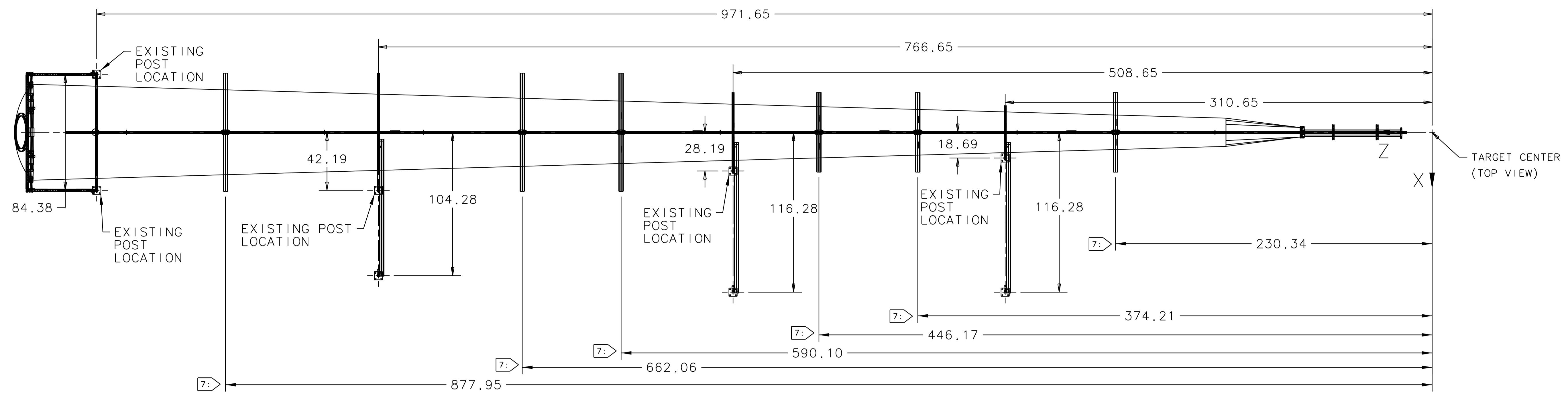


Cannot move this side to the left without modifying the flange (and shielding)

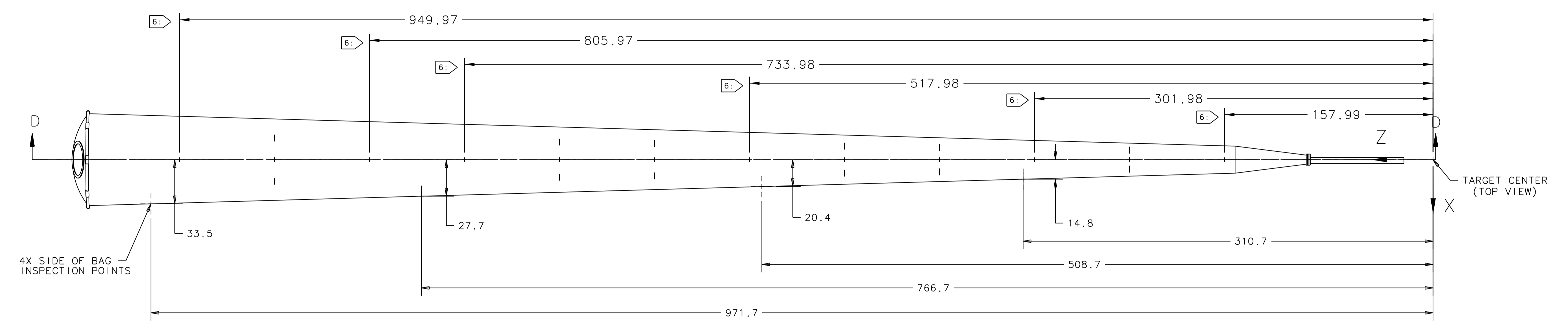
Need to shift up by 0.14" so that the inner part of the top of the box is 1.5" from the beamline

-05 ADAPTOR

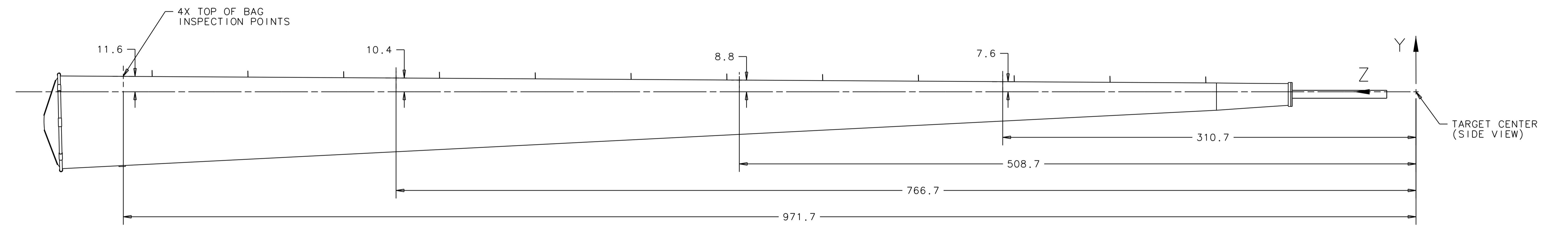
SCALE 1/2



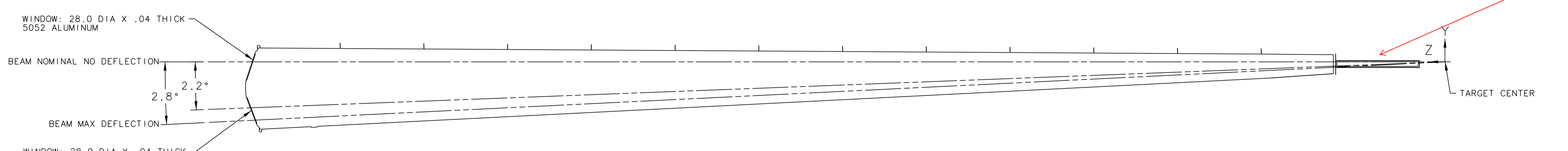
HE BAG FRAME POST LOCATIONS
LOCATIONS ARE AT THE POST CENTER (TOP VIEW)



HE BAG INSPECTION POINTS
(TOP VIEW)



HE BAG INSPECTION POINTS
(SIDE VIEW)



HE BAG BEAM DEFLECTIONS
SECTION D-D

old smaller size extension

DOCUMENT CONTROL STAMP	SIZE	DWG. NO.	REV.
	E	67504-XXXXX	
	SCALE	1000 IN ASST NO. 67504-00001	SHEET OF 2

WINDOW: 28.0 DIA X .04 THICK
5052 ALUMINUM

BEAM NOMINAL NO DEFLECTION

5.9 GeV

4.7 GeV

2.2°

2.8°

BEAM MAX DEFLECTION

WINDOW: 28.0 DIA X .04 THICK
5052 ALUMINUM

We will see if we
can move windows
farther from the
centerline

