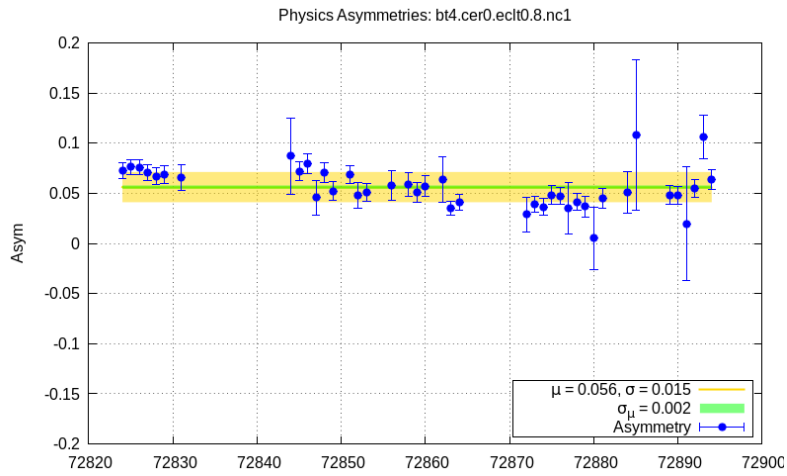
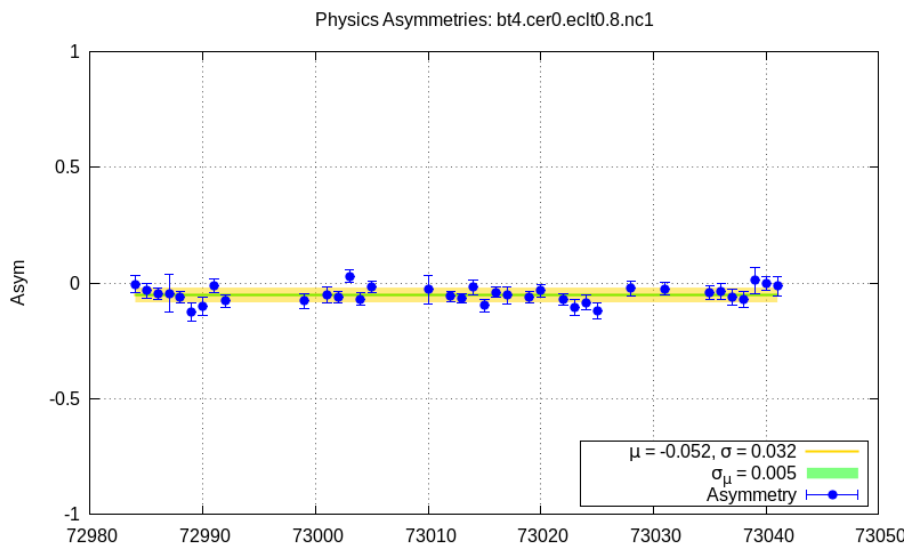


*Illustration 1: cer\_h = 0 single cluster mean asymmetries for E<0.8 GeV*



*Illustration 2: 4.7 GeV 80°*



*Illustration 3: 4.7 GeV parallel*

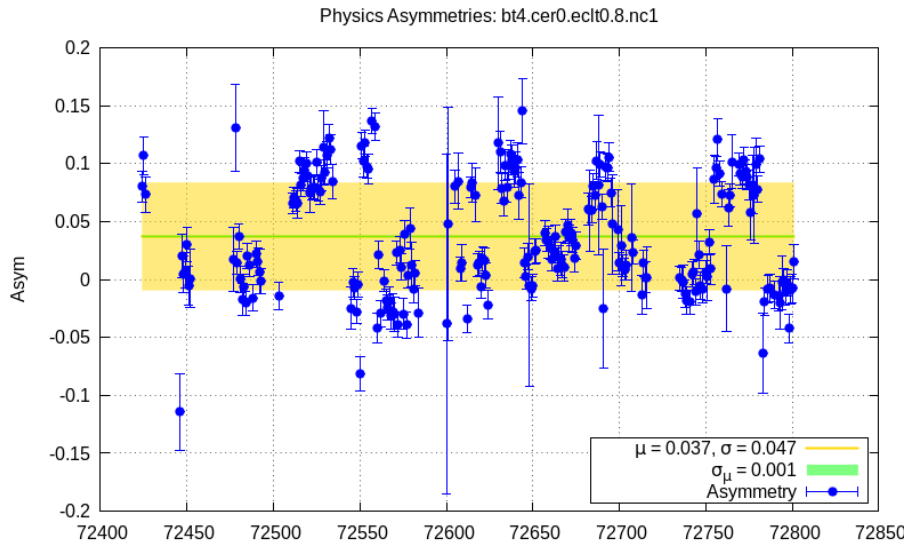


Illustration 4: 5.9 GeV 80°

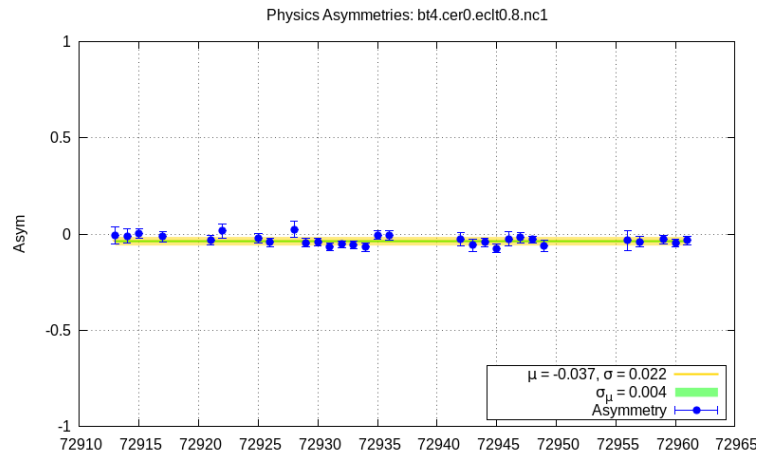
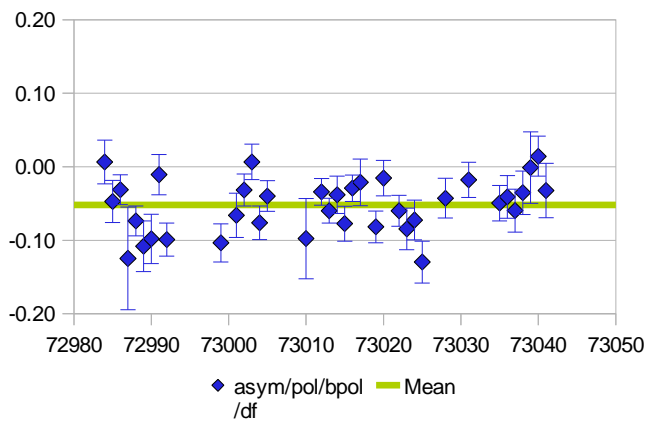
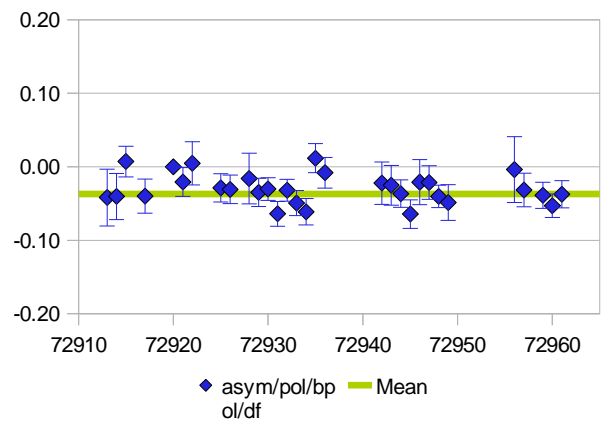


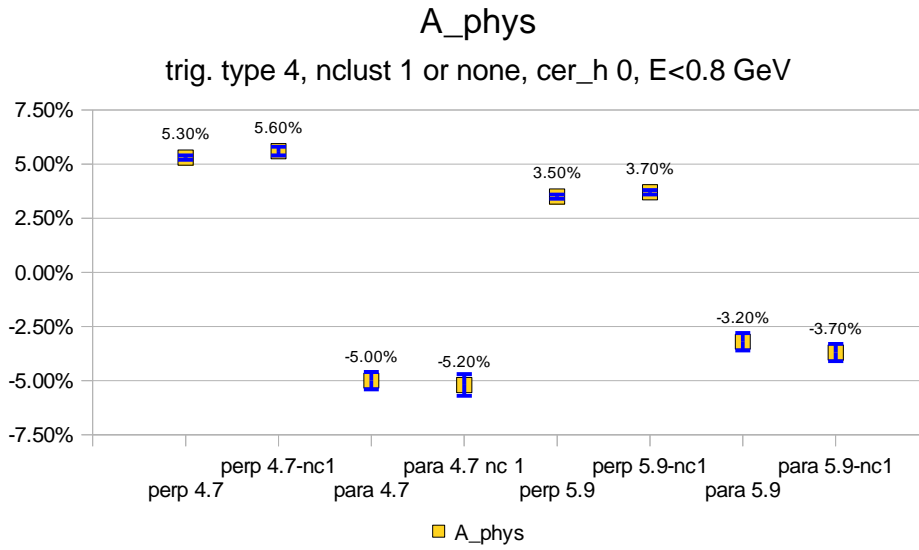
Illustration 5: 5.9 GeV para

A\_phys 4.7 GeV parallel  
 bt4.cer0.eclt0.8.nc1

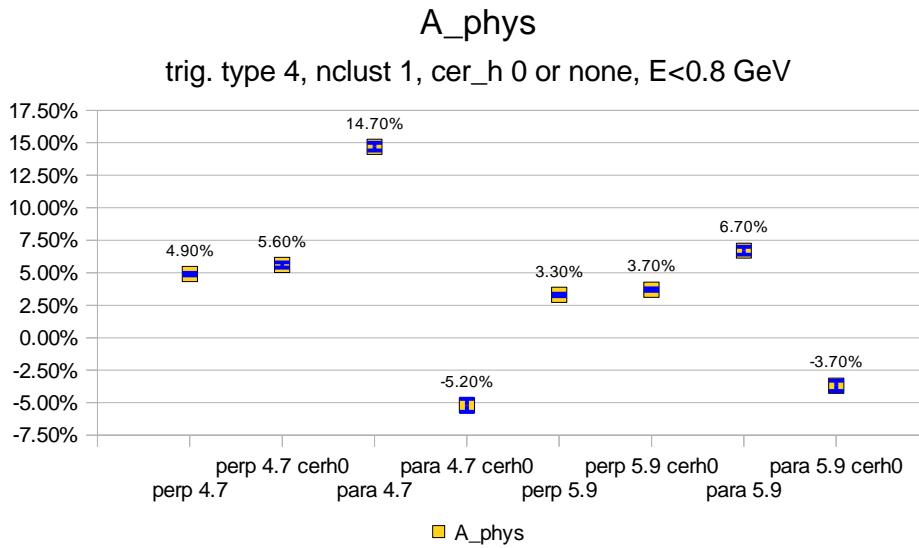


A\_phys 5.9 GeV parallel  
 bt4.cer0.eclt0.8.nc1





*Illustration 6: Physics A for cer\_h=0, any or 1 cluster*



*Illustration 7: Physics A for single cluster, cer\_h = any or 0*