

# Forward Tracker Update

## SANE Analysis Update

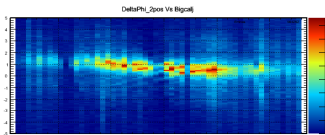
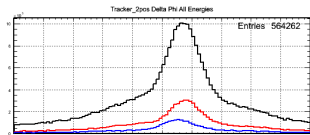
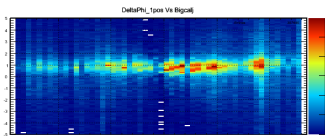
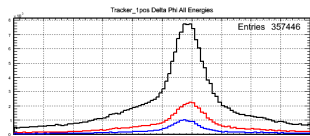
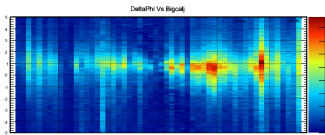
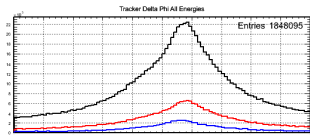
Whitney R. Armstrong    The SANE Collaboration

Temple University

September 26, 2012

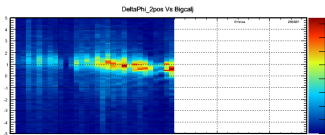
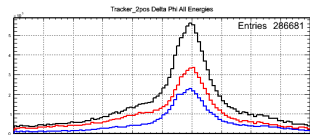
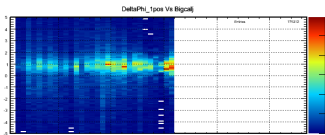
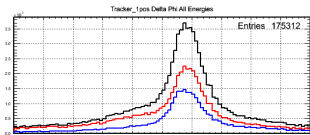
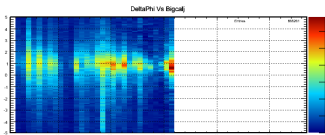
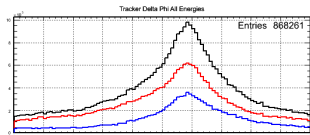
## 1 Forward Tracker

- Forward Tracker  $\Delta\phi$
- Vertex Reconstruction
  - Varying the Y-offset
- Averaging the plane's Z position
- Correcting the X-coordinate
- Correcting the X and X Coordinate
- A closer look at each plane



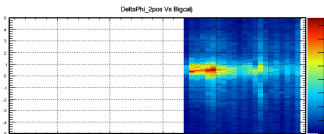
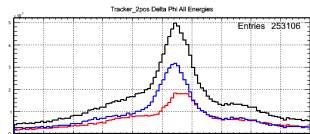
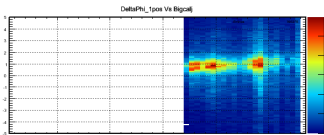
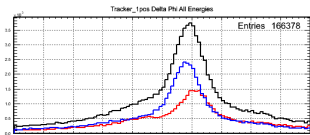
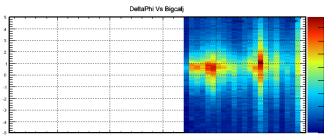
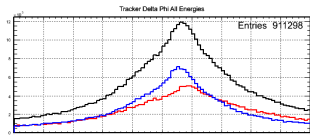
- Black - Tracker (X+Y1+Y2) Positions
- Red - Tracker (X+Y1) Positions
- Blue - Tracker (X+Y2) Positions

# Protvino - Tracker $\Delta\phi$



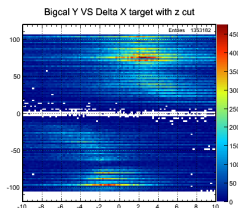
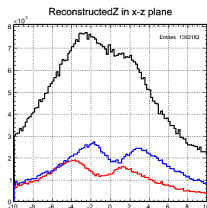
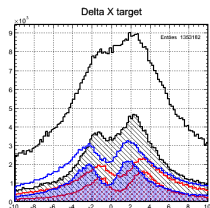
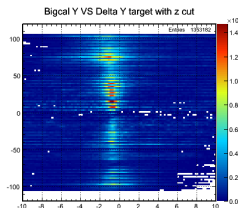
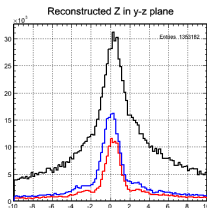
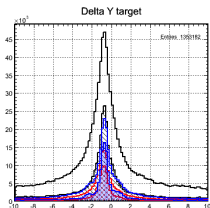
- Black - Tracker (X+Y1+Y2) Positions
- Red - Tracker (X+Y1) Positions
- Blue - Tracker (X+Y2) Positions

# RCS - Tracker $\Delta\phi$



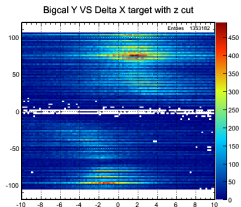
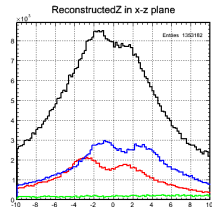
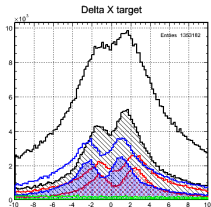
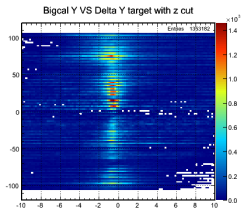
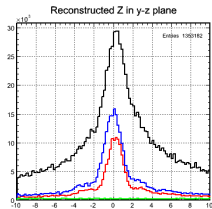
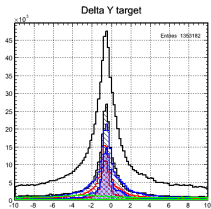
- Black - Tracker (X+Y1+Y2) Positions
- Red - Tracker (X+Y1) Positions
- Blue - Tracker (X+Y2) Positions

# Vertex from Bigcal and Tracker



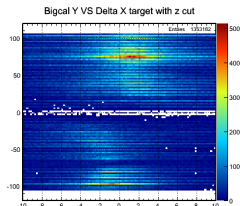
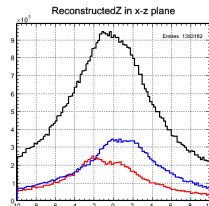
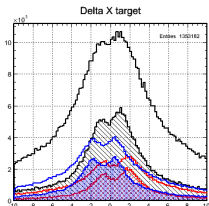
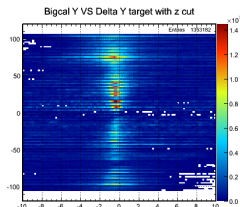
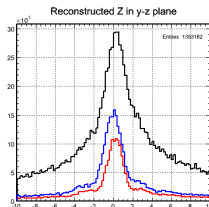
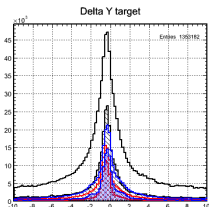
- Results with the Y1 and Y2 offsets to 0 mm and -1.5 mm
- Black - Tracker (X+Y1+Y2) Positions
- Red - Tracker (X+Y1) Positions
- Blue - Tracker (X+Y2) Positions

# Vertex from Bigcal and Tracker



- Results with the Y1 and Y2 offsets to -1.5 mm and -3 mm
- Black - Tracker (X+Y1+Y2) Positions
- Red - Tracker (X+Y1) Positions
- Blue - Tracker (X+Y2) Positions

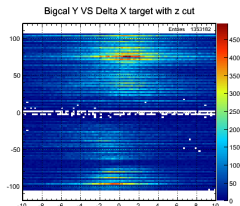
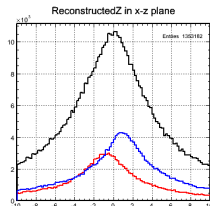
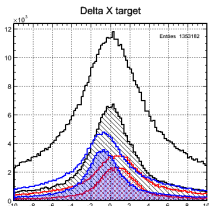
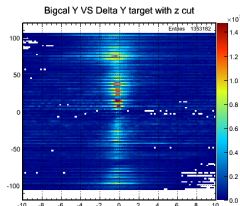
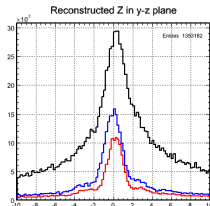
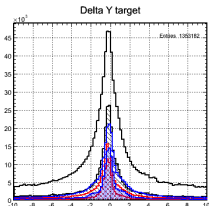
# Vertex from Bigcal and Tracker



- Results with the Y1 and Y2 offsets to -3 mm and -4.5 mm
- Black - Tracker (X+Y1+Y2) Positions
- Red - Tracker (X+Y1) Positions
- Blue - Tracker (X+Y2) Positions

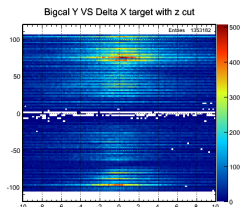
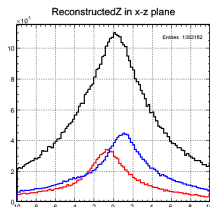
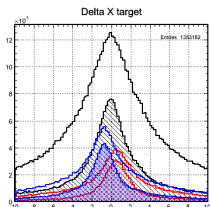
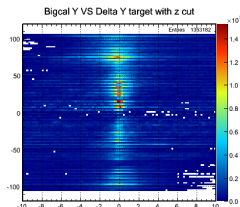
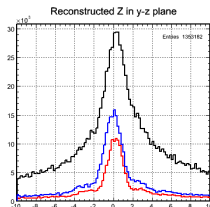
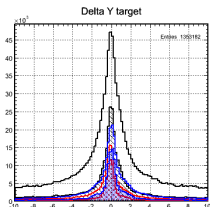


# Vertex from Bigcal and Tracker



- Results with the Y1 and Y2 offsets to -4.5 mm and -6 mm
- Black - Tracker (X+Y1+Y2) Positions
- Red - Tracker (X+Y1) Positions
- Blue - Tracker (X+Y2) Positions

# Vertex from Bigcal and Tracker



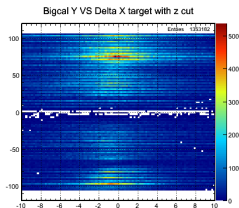
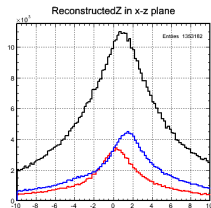
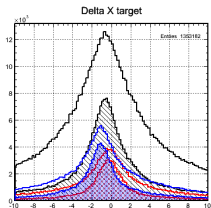
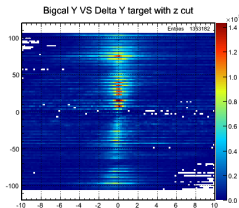
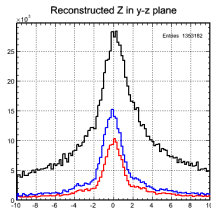
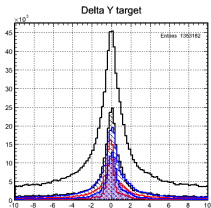
- Results with the Y1 and Y2 offsets to -6 mm and -7.5 mm
- Black - Tracker (X+Y1+Y2) Positions
- Red - Tracker (X+Y1) Positions
- Blue - Tracker (X+Y2) Positions

# Vertex from Bigcal and Tracker

Instead of using the  $z$  positions of the Y layer, we can use the average  $z$  position between the Y and X layer.

# X-Y plane averaged Z position

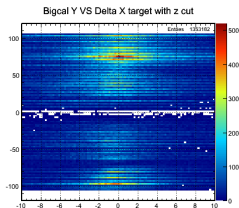
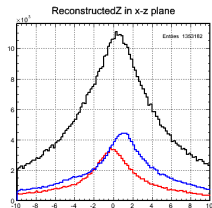
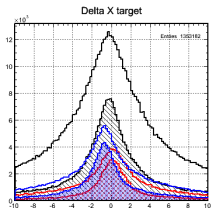
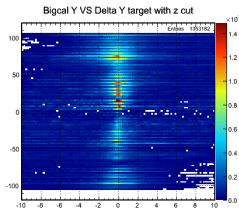
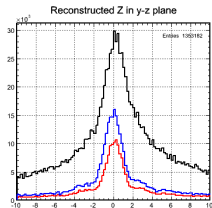
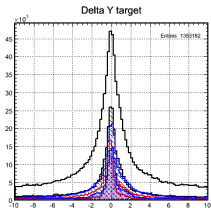
The blue and red peaks in delta X moved closer together.



- Results with the Y1 and Y2 offsets to -6 mm and -7.5 mm
- $Z_{tracker} = 50.5\text{cm}$
- Black - Tracker (X+Y1+Y2) Positions
- Red - Tracker (X+Y1) Positions
- Blue - Tracker (X+Y2) Positions

# X-Y plane averaged Z position

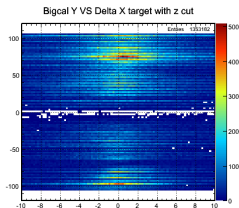
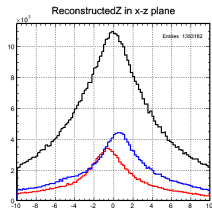
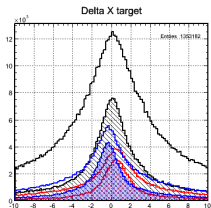
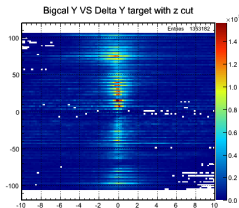
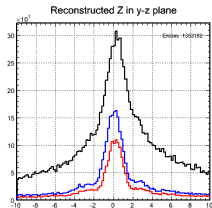
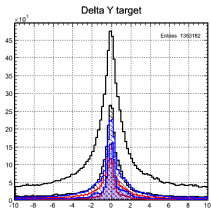
Adjusting the Z position...



- Results with the Y1 and Y2 offsets to -6 mm and -7.5 mm
- $Z_{tracker} = 50\text{cm}$
- Black - Tracker (X+Y1+Y2) Positions
- Red - Tracker (X+Y1) Positions
- Blue - Tracker (X+Y2) Positions

# X-Y plane averaged Z position

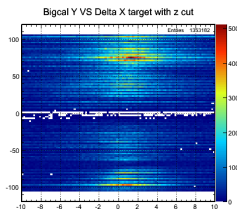
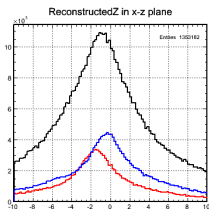
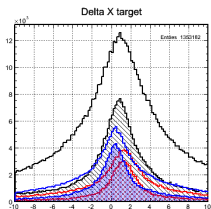
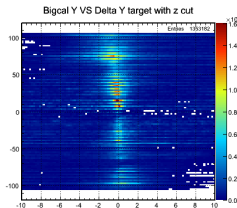
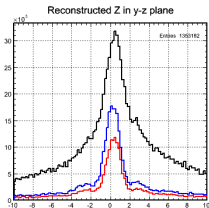
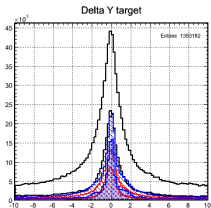
Adjusting the Z position...



- Results with the Y1 and Y2 offsets to -6 mm and -7.5 mm
- $Z_{tracker} = 49.5$  cm
- Black - Tracker (X+Y1+Y2) Positions
- Red - Tracker (X+Y1) Positions
- Blue - Tracker (X+Y2) Positions

# X-Y plane averaged Z position

Adjusting the Z position...



- Results with the Y1 and Y2 offsets to -6 mm and -7.5 mm
- $Z_{tracker} = 48.5$  cm
- Black - Tracker (X+Y1+Y2) Positions
- Red - Tracker (X+Y) Positions
- Blue - Tracker (X+Y2) Positions

## Using average and correcting the x coordinate

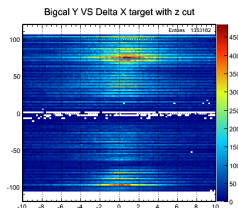
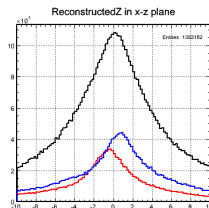
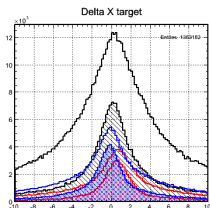
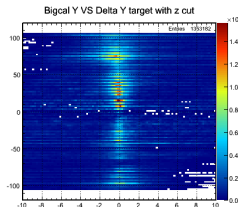
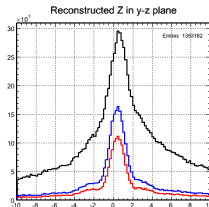
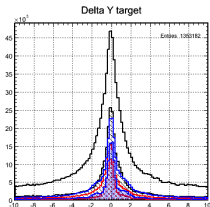
Using the x position and the angle of a track straight to the target origin the x coordinate is corrected.

$$\Delta x = \Delta z \tan(\theta) \quad x_{corrected} = x - \frac{x(Z_{X1} - Z_{Y1})}{(Z_{X1} + Z_{Y1})}$$



# X corrected position

X corrected for angle. The two plane's reconstructed Z in y-z plane become aligned



- Results with the Y1 and Y2 offsets to -6 mm and -7.5 mm
- $Z_{tracker} = 49.5$  cm
- Black - Tracker (X+Y1+Y2) Positions
- Red - Tracker (X+Y1) Positions
- Blue - Tracker (X+Y2) Positions

# Correcting x and y coordinates

Correction of both coordinates.

## X coordinate

$$\Delta x = -\Delta z \tan(\theta)/2$$

$$x_{corrected} = x - \frac{x(Z_{X1}-Z_{Y1})}{(Z_{X1}+Z_{Y1})}$$

## Y coordinate

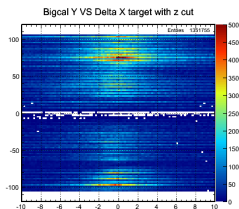
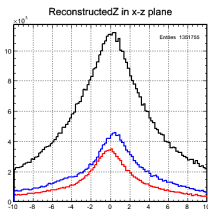
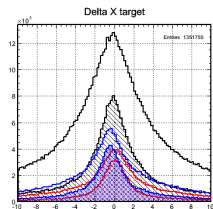
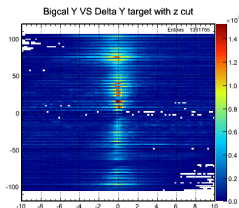
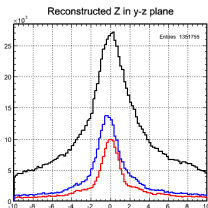
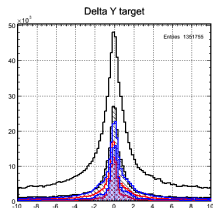
$$\Delta y = \Delta z \tan(\theta)/2$$

Note the sign difference.

$$y_{corrected} = y + \frac{y(Z_{X1}-Z_{Y1})}{(Z_{X1}+Z_{Y1})}$$

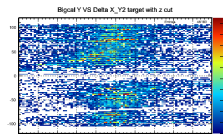
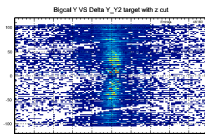
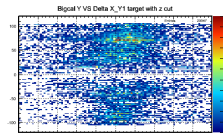
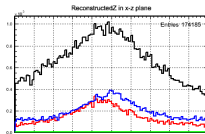
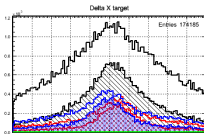
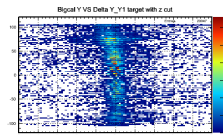
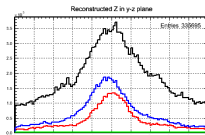
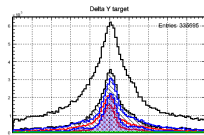
# X and Y corrected position

X and Y corrected for angle... z reconstruction becomes unaligned again.



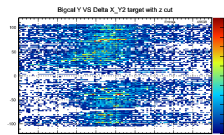
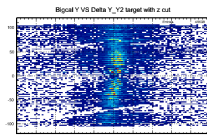
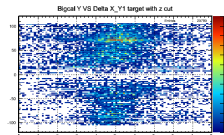
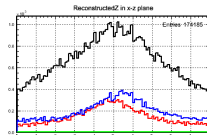
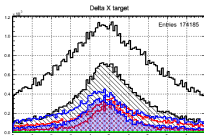
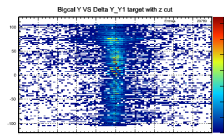
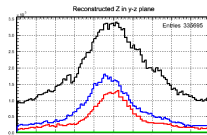
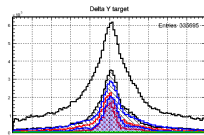
- Results with the Y1 and Y2 offsets to -6 mm and -7.5 mm
- $Z_{tracker} = 49$  cm
- Black - Tracker (X+Y1+Y2) Positions
- Red - Tracker (X+Y1) Positions
- Blue - Tracker (X+Y2) Positions

# X and Y corrected position



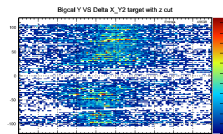
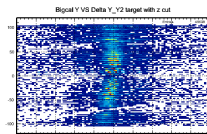
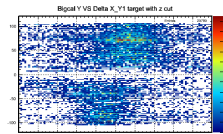
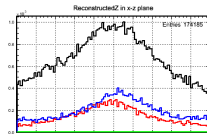
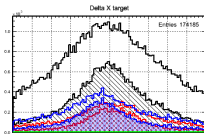
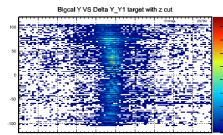
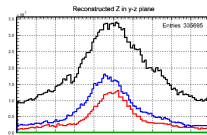
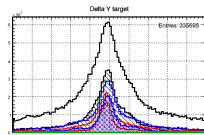
- Results with the Y1 and Y2 offsets to -7.5 mm and -9 mm
- $Z_{tracker} = 48.5$  cm
- Black - Tracker (X+Y1+Y2) Positions
- Red - Tracker (X+Y1) Positions
- Blue - Tracker (X+Y2) Positions

# X and Y corrected position



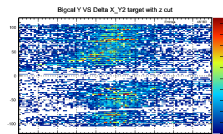
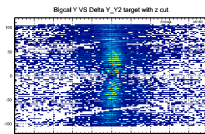
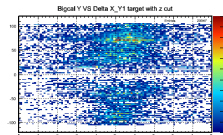
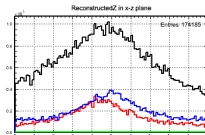
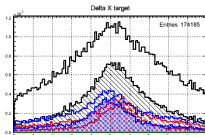
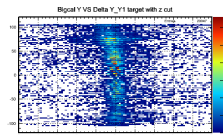
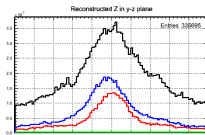
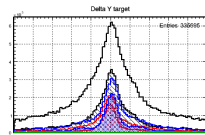
- Results with the Y1 and Y2 offsets to -7.5 mm and -9 mm
- $Z_{tracker} = 49$  cm
- Black - Tracker (X+Y1+Y2) Positions
- Red - Tracker (X+Y1) Positions
- Blue - Tracker (X+Y2) Positions

# X and Y corrected position



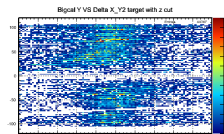
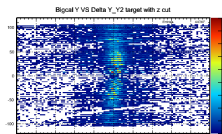
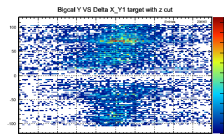
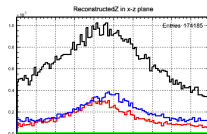
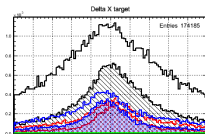
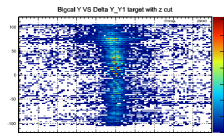
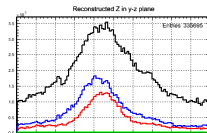
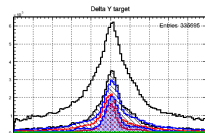
- Results with the Y1 and Y2 offsets to -6 mm and -7.5 mm
- $Z_{tracker} = 49$  cm
- Black - Tracker (X+Y1+Y2) Positions
- Red - Tracker (X+Y1) Positions
- Blue - Tracker (X+Y2) Positions

# X corrected position



- Results with the Y1 and Y2 offsets to -7.5 mm and -9 mm
- $Z_{tracker} = 48.5$  cm
- Black - Tracker (X+Y1+Y2) Positions
- Red - Tracker (X+Y1) Positions
- Blue - Tracker (X+Y2) Positions

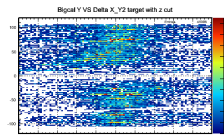
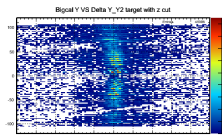
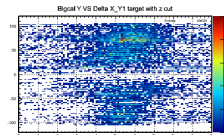
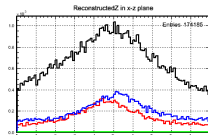
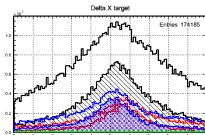
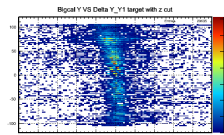
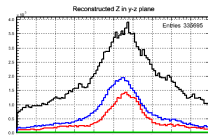
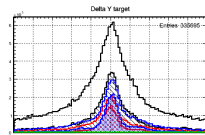
# X corrected position



- Results with the Y1 and Y2 offsets to -7.5 mm and -9 mm
- X1 offset set to +1.5mm
- $Z_{tracker} = 48.5$  cm
- Black - Tracker (X+Y1+Y2) Positions
- Red - Tracker (X+Y1) Positions
- Blue - Tracker (X+Y2) Positions



# X corrected position

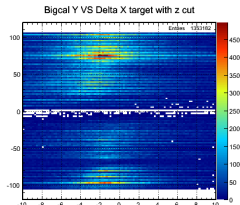
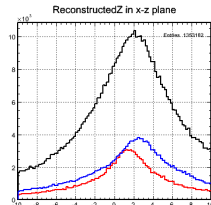
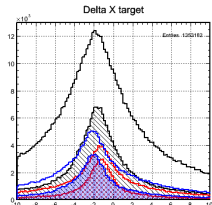
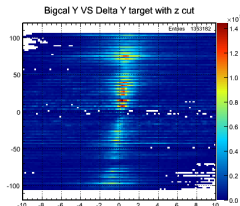
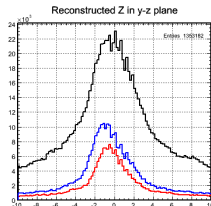
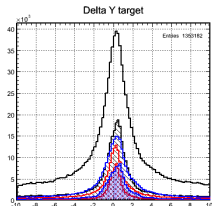


- Results with the Y1 and Y2 offsets to -7.5 mm and -9 mm
- X1 offset set to -4.5mm
- $Z_{tracker} = 48.5$  cm
- Black - Tracker (X+Y1+Y2) Positions
- Red - Tracker (X+Y1) Positions
- Blue - Tracker (X+Y2) Positions

# Conclusion

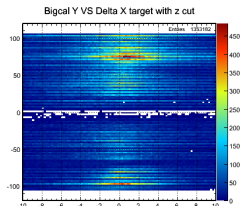
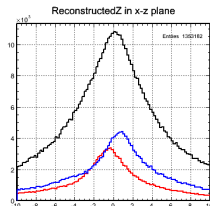
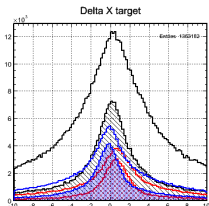
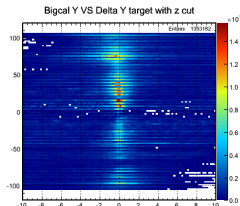
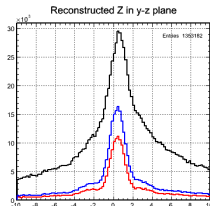
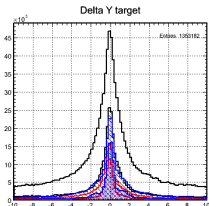
- $Z_{tracker} \simeq 49cm$
- $X_{offset} \simeq -1.5mm$
- $Y1_{offset} \simeq -6.0mm$
- $Y2_{offset} \simeq -7.5mm$

# Before



- Results with the Y1 and Y2 offsets to 0 mm and -1.5 mm
- X1 offset set to -1.5mm
- $Z_{tracker} = 51.7$  cm
- Black - Tracker (X+Y1+Y2) Positions
- Red - Tracker (X+Y1) Positions
- Blue - Tracker (X+Y2) Positions

# After



- Results with the Y1 and Y2 offsets to -6 mm and -7.5 mm
- X1 offset set to -1.5mm
- $Z_{tracker} = 49.5$  cm
- Black - Tracker (X+Y1+Y2) Positions
- Red - Tracker (X+Y1) Positions
- Blue - Tracker (X+Y2) Positions

## Currently working on...

From the survey the “Pitch” was about  $-0.71$  degrees or  $-0.0123$  radians  
 $40\tan(0.0123) = 0.49$  cm.

So the tracker is leaning back with  $1/2$  a cm difference from top to bottom.