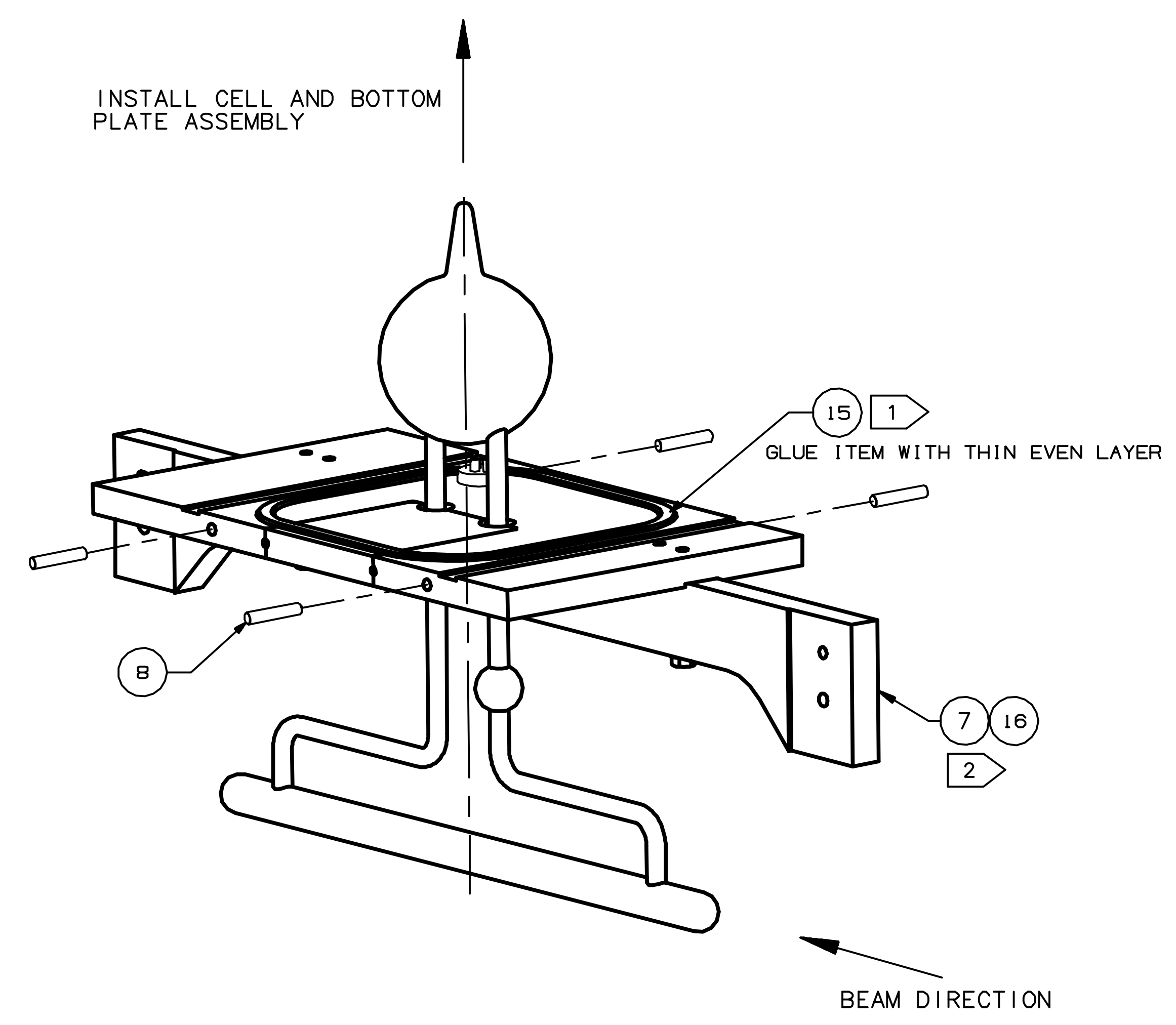
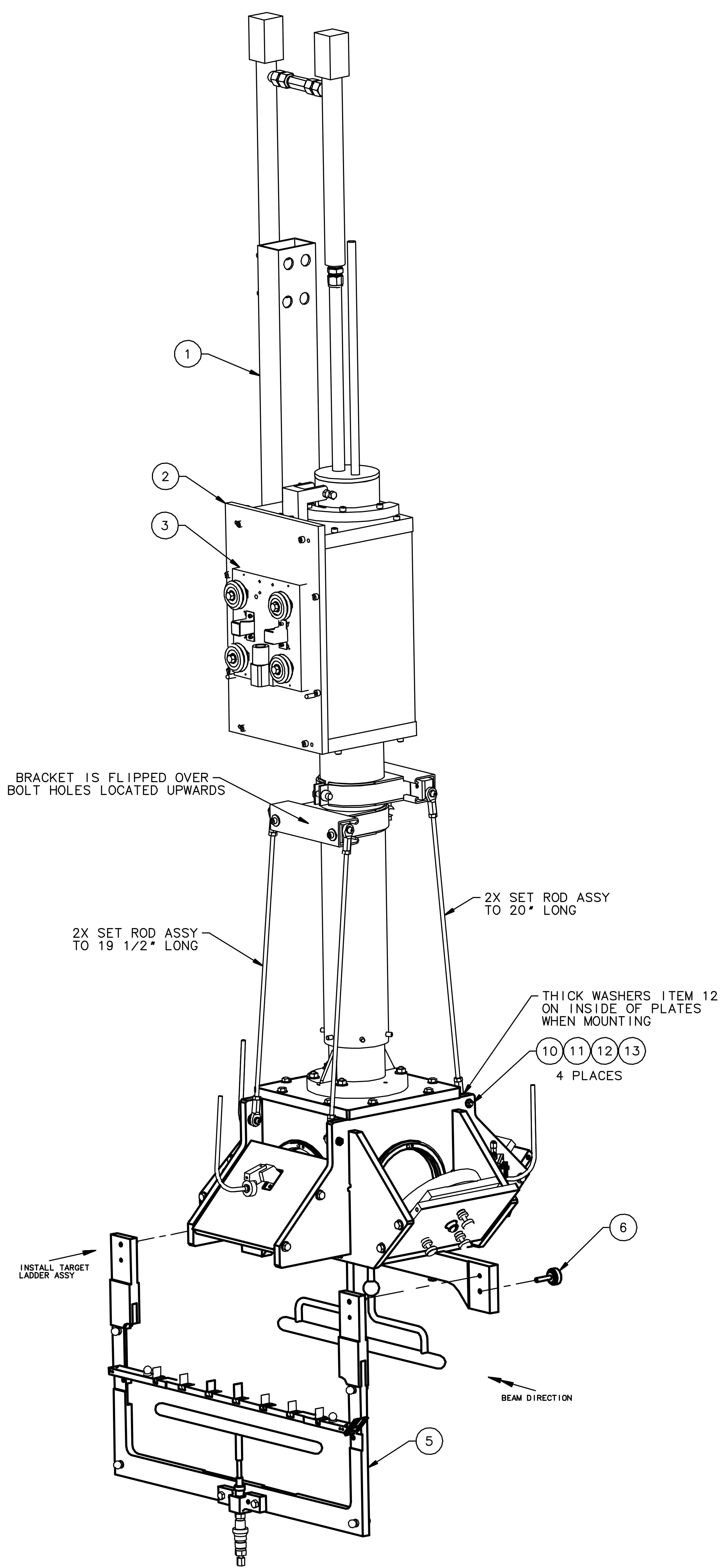
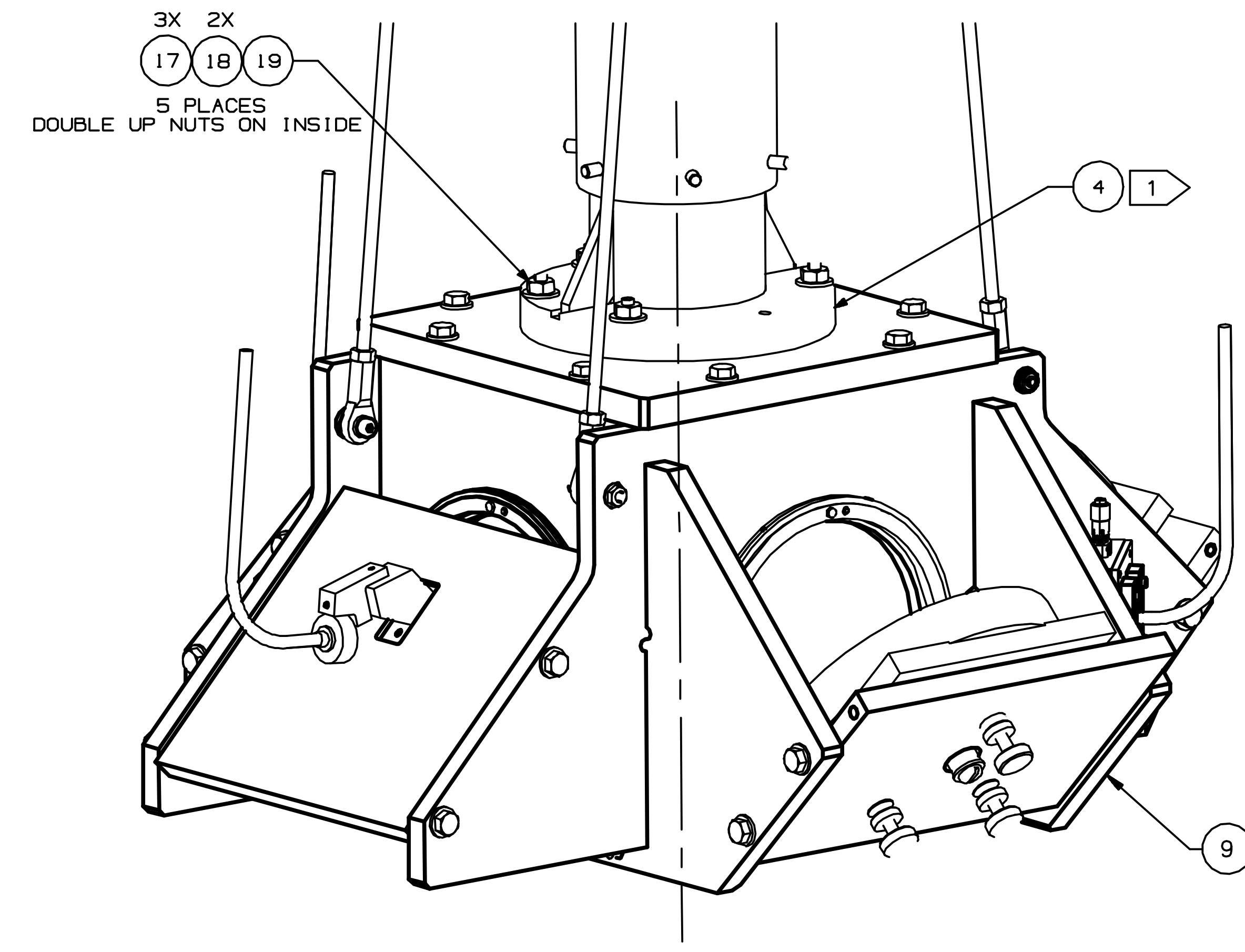


REVISION HISTORY				
ZONE	REV	DESCRIPTION	DATE	APPROVED
-	A	ADDED NOTES, UPDATED VIEWS	6/17/16	
-	B	ADDED ITEM 15 TO 19, UPDATED NOTES	1/3/17	



- NOTES**
1. SEAL / GLUE TO OVEN USING ITEM 14.
 2. FOR CELL AND BOTTOM PLATE GLUE UP SEE WORKING CELL GLUE UP AND BOTTOM PLATE GLUE ASSY 67507-00075.

QTY	ITEM NO	PART OR IDENTIFYING NO	DESCRIPTION OR IDENTIFICATION	MATERIAL SPECIFICATION	NOTES
5	19	A06010-03-04-1213	CERAMIC THREADED ROD 1/4-20 UNC x 2-1/2 LG	MACOR	-
10	18	McMASTER-CARR 91950A029	WASHER 1/4 RGLR	STNLS STL	-
15	17	McMASTER-CARR 91850A029	NUT HEX 1/4-20 UNC	STNLS STL	-
1	16	67507-00051-01	CELL AND BOTTOM PLATE ASSEMBLY	-	-
1	15	67507-00045	OVEN SEAL	-	-
AR	14	PERMATEX	HI-TEMP FORM-A-GASKET RED 600°	SILICONE	-
4	13	McMASTER-CARR 97345A542	SHOULDER SCREW 1/4 DIA. X 1\"/>		

DOCUMENT CONTROL STAMP FINISH MACHINED SURFACES UNLESS OTHERWISE NOTED DEBURR & BREAK ALL SHARP EDGES DO NOT SCALE DRAWING	TRACKING NO N/A APPROVALS DATE 6/13/16 DRAWN METZGER CHECKED APPROVED APPROVED	United States Department of Energy Jefferson National Accelerator Facility HALL C A1N OVEN / TARGET LADDER ASSEMBLY SIZE DWG NO B 67507-00051 SHEET 1 OF 1
----------------------------------------------------------------------------------------------------------------------------------	-----------------------------------------------------------------------------------------------------------	------------------------------------------------------------------------------------------------------------------------------------------------------------------------------

In accordance with the Jefferson Lab ESH&Q manual Subject Matter Expert(SME) signatures may be required